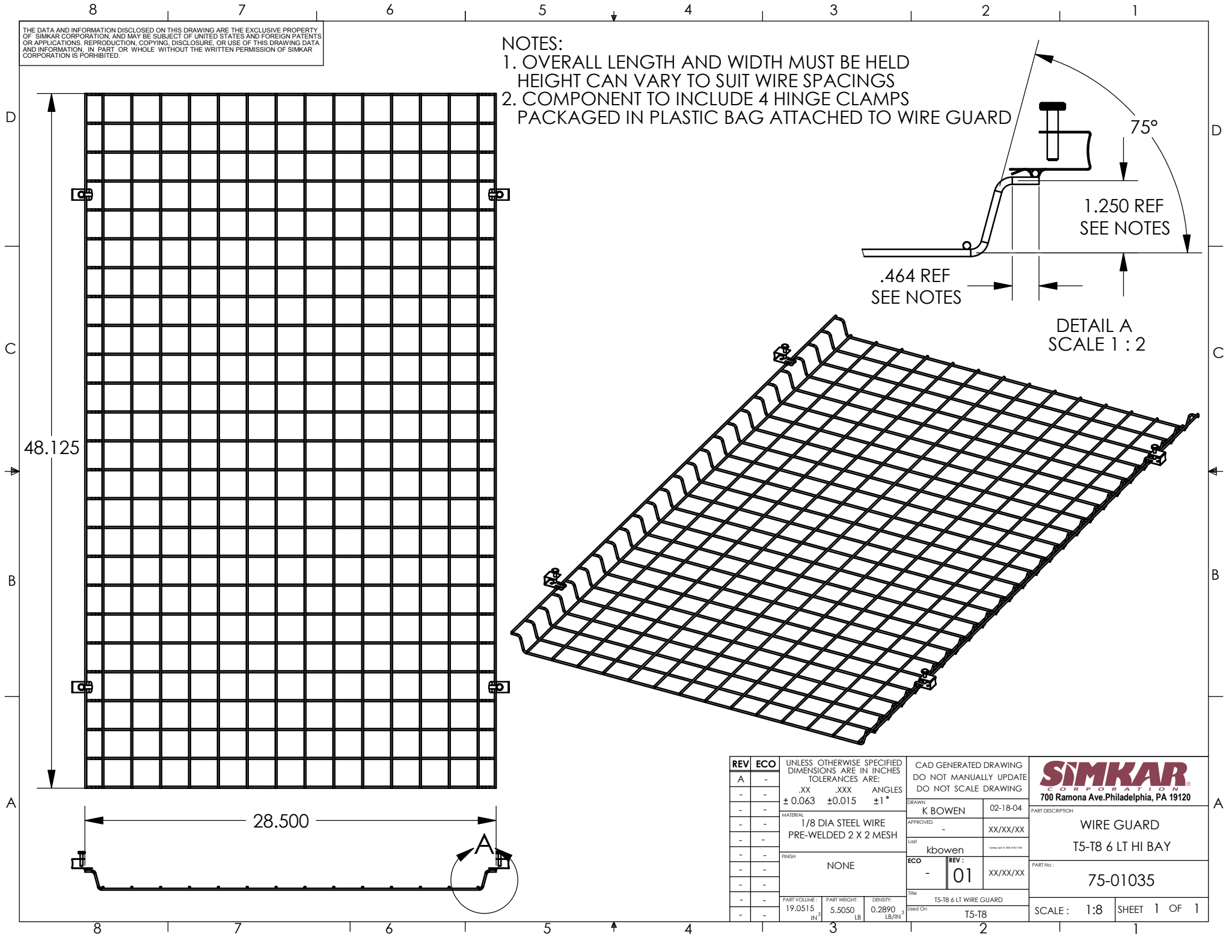


THE DATA AND INFORMATION DISCLOSED ON THIS DRAWING ARE THE EXCLUSIVE PROPERTY OF SIMKAR CORPORATION, AND MAY BE SUBJECT OF UNITED STATES AND FOREIGN PATENTS OR APPLICATIONS. REPRODUCTION, COPYING, DISCLOSURE, OR USE OF THIS DRAWING DATA AND INFORMATION, IN PART OR WHOLE WITHOUT THE WRITTEN PERMISSION OF SIMKAR CORPORATION IS FORBIDDEN.

**NOTES:**

1. OVERALL LENGTH AND WIDTH MUST BE HELD  
HEIGHT CAN VARY TO SUIT WIRE SPACINGS
2. COMPONENT TO INCLUDE 4 HINGE CLAMPS  
PACKAGED IN PLASTIC BAG ATTACHED TO WIRE GUARD



<b>REV</b>	<b>ECO</b>	UNLESS OTHERWISE SPECIFIED DIMENSIONS ARE IN INCHES TOLERANCES ARE: .XX .XXX ANGLES ± 0.063 ±0.015 ±1°	CAD GENERATED DRAWING DO NOT MANUALLY UPDATE DO NOT SCALE DRAWING		 700 Ramona Ave. Philadelphia, PA 19120
A	-		DRAWN	K BOWEN 02-18-04	
-	-	MATERIAL	1/8 DIA STEEL WIRE PRE-WELDED 2 X 2 MESH	APPROVED	- XX/XX/XX
-	-	FINISH	NONE	ECO	-
-	-	PART VOLUME	19.0515 IN <sup>3</sup>	REV	01 XX/XX/XX
-	-	PART WEIGHT	5.5050 LB	ECO	-
-	-	DENSITY	0.2890 LB/IN <sup>3</sup>	REV	01 XX/XX/XX
-	-	Title		T5-T8 & LT WIRE GUARD	
-	-	Drawn By		T5-T8	
			SCALE	1:8	SHEET 1 OF 1

**WIRE GUARD**  
T5-T8 6 LT HI BAY  
75-01035