

# RNTP Series Round Non-Tapered Steel Poles



## Shaft

Fabricated from high grade structural steel tube, the shaft conforms to ASTM specifications. It meets or exceeds minimum yield strength of 55,000 psi. A reinforced hand hole is furnished with cover.

## Base Plate

Fabricated from structural quality hot rolled steel, the base plate meets or exceeds minimum yield strength of 36,000 psi. Bolt holes are slotted to provide 1" flexibility on either side of bolt circle centerline.

## Anchorage

Anchor bolts are made of hot rolled steel bar with minimum yield strength of 50,000 psi. Bolts have an "L" bend on one end and are threaded on the other end. Bolts are galvanized 12" from the top of the thread and are furnished with two nuts and two washers.

## Base Cover

Fabricated from heavy gauge quality carbon steel, the two piece cover conceals base. ABS plastic is supplied with some sizes.

## Standard Finish

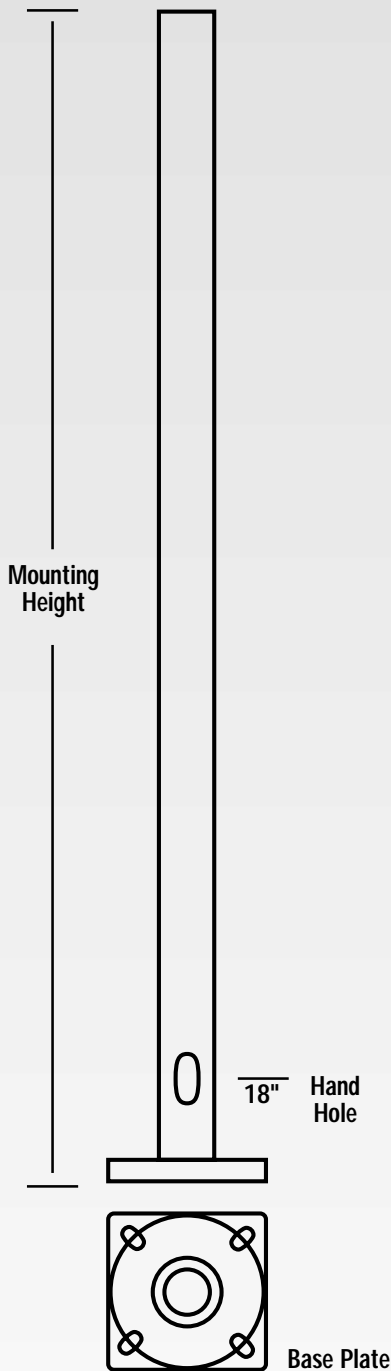
The RNTP Series is furnished with an electrostatically applied red oxide primer over 2 stage cleaning process.

## Painted Finish (optional)

A choice of galvanized or painted finish is available (check with factory for cost and color options). The painted finish is an electrostatically applied acrylic enamel over red oxide primer or powder coating, specify color.

## Fixture Mounting

RNTP Series mounting options use either a 2-3/8" or a 2-7/8" tenon. See next page for mounting codes.



## Round Non-Tapered Steel Poles

Pole Height	Catalog Number	Base Outer Diameter	Pole EPA Ratings				Max. Fix. Wt. (lbs) @ 80 MPH	Shipping Wt. (lbs.)
			Base Wind Velocity (MPH) With 1.3 Wind Gust Factor					
			80	90	100			
10'	RNTP-300V100-(a)(b)	3.0	10.0	7.7	6.0	250	55	
	RNTP-400V100-(a)(b)	4.0	19.1	15.0	12.2	480	70	
	RNTP-450V100-(a)(b)	4.5	24.5	19.5	15.8	615	75	
12'	RNTP-300V120-(a)(b)	3.0	7.7	5.8	4.4	195	60	
	RNTP-400V120-(a)(b)	4.0	15.0	11.8	9.5	390	80	
	RNTP-450V120-(a)(b)	4.5	19.8	15.7	12.7	495	85	
14'	RNTP-300V140-(a)(b)	3.0	6.0	4.4	3.3	175	70	
	RNTP-400V140-(a)(b)	4.0	12.2	9.4	7.6	305	90	
	RNTP-450V140-(a)(b)	4.5	16.2	12.8	10.3	405	95	
16'	RNTP-300V160-(a)(b)	3.0	4.6	3.2	2.3	125	80	
	RNTP-400V160-(a)(b)	4.0	9.6	7.4	5.9	250	100	
	RNTP-450V160-(a)(b)	4.5	13.1	10.2	8.2	330	105	
18'	RNTP-300V180-(a)(b)	3.0	3.4	2.3	1.4	90	90	
	RNTP-400V180-(a)(b)	4.0	7.6	5.7	4.5	190	110	
	RNTP-450V180-(a)(b)	4.5	10.5	8.2	6.5	265	115	
20'	RNTP-300V200-(a)(b)	3.0	2.4	1.4		100	100	
	RNTP-400V200-(a)(b)	4.0	6.0	4.45	3.45	150	120	
	RNTP-450V200-(a)(b)	4.5	8.5	6.6	5.2	215	130	
25'	RNTP-500V200-(a)(b)	5.0	11.75	9.1	7.25	300	145	
	RNTP-400V250-(a)(b)	4.0	2.85	1.95	1.35	100	145	
	RNTP-450V250-(a)(b)	4.5	4.8	3.6	2.7	130	155	
30'	RNTP-500V250-(a)(b)	5.0	7.25	5.5	4.25	180	180	
	RNTP-450V300-(a)(b)	4.5	2.3	1.5	1.0	80	185	
	RNTP-500V300-(a)(b)	5.0	4.2	3.0	2.25	150	210	

Other sizes available upon request.

(a) Pole Finish: Indicate finish in space (a)

Description	Prime	Bronze	Black	Galvanized
	P	BZ	BK	GLV

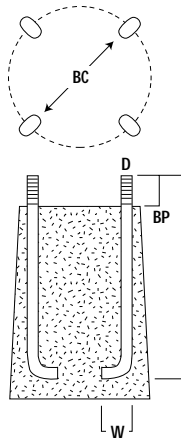
b) Mounting Code: See detail next page.

**Above information is only a guide.  
Check manufacturer's specifications for correct data.**

### Mounting Code

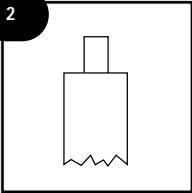
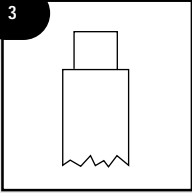
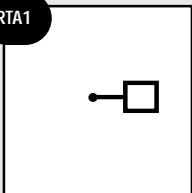
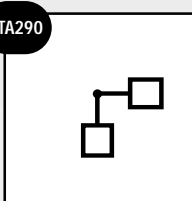
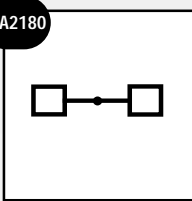
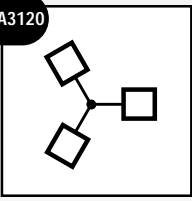
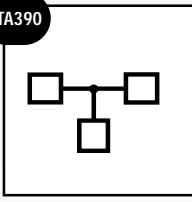
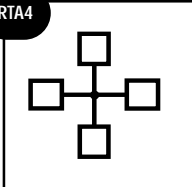
b) Mounting Code: Indicate mounting in space (b)		SUFFIX
Description	(b)	
2-3/8" Tenon (Standard)	2	
2-7/8" Tenon (Special Order)	3	
One Fixture (Use Adaptor)		RTA1
Two Fixtures 90° (Use Adaptor)		RTA290
Two Fixtures 180° (Use Adaptor)		RTA2180
Three Fixtures 120° (Use Adaptor)		RTA3120
Three Fixtures 90° (Use Adaptor)		RTA390
Four Fixtures 90° (Use Adaptor)		RTA4

BC = Bolt Circle Diameter  
 BP = Bolt Projection  
 D = Anchor Bolt Diameter  
 L = Anchor Bolt Length  
 W = Anchor Bolt Width



*Above information is only a guide.  
 Check manufacturer's specifications for correct  
 bolt patterns and anchor bolts.*

## RNTP Series Round Non-Tapered Steel Poles

<b>2</b>		2-3/8" Tenon
<b>3</b>		2-7/8" Tenon
<b>RTA1</b>		One Fixture
<b>RTA290</b>		Two Fixtures 90°
<b>RTA2180</b>		Two Fixtures 180°
<b>RTA3120</b>		Three Fixtures 120°
<b>RTA390</b>		Three Fixtures 90°
<b>RTA4</b>		Four Fixtures 90°