



**Round External Mount
With 6" or 12" Arms
RTA Series**

Designed to fit snugly on 2-3/8" tenons. The RTA Series uses 6" or 12" arms for direct mount on 12", 16" and 23" square fixtures. Use 12" arms for mounting 23" square fixtures.

Finish

All brackets are finished with an acrylic bronze powder coating for longer life.

Mounting

Uses 4, 5/16 allen head high tensile strength screws for securing to tenon. Cover cap snaps off for easy wiring access.

External Mount Tenon Adaptors Order Information

Description	Catalog Number		Shipping Wt. (lbs.)
	Horizontal Tenons		
Single Mount 6" Arm	RTA1		13
Single Mount 12" Arm	RTA1M		15
90° Twin Mount 6" Arm	RTA290		15
90° Twin Mount 12" Arm	RTA290M		19
180° Twin Mount 6" Arm	RTA2180		15
180° Twin Mount 12" Arm	RTA2180M		19
90° Triple Mount 6" Arm	RTA390		17
90° Triple Mount 12" Arm	RTA390M		23
120° Triple Mount 6" Arm	RTA3120		17
120° Triple Mount 12" Arm	RTA3120M		23
90° Quad Mount 6" Arm	RTA4		19
90° Quad Mount 12" Arm	RTA4M		27

Note: When using RTA adaptors – change mounting code for fixture to 8.

Arms for RTA Series

Description	Catalog Number		Shipping Weights (lbs.)
6"	MA2R		2.5
12"	MA5R		4

All arms supplied with mounting hardware.

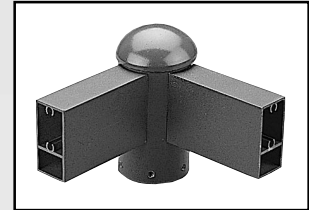
Presized for use with 4" Non-Tapered Poles Only – DO NOT use with tapered poles.

EPA Ratings on Page 34 for Mounting Brackets with Fixtures.

**RTA Series – Round Pole
Mounting Brackets**



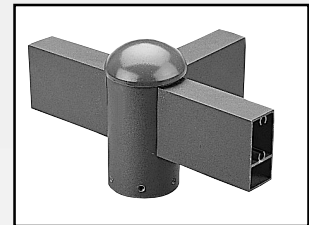
Single (RTA1 for 6" Arm/RTA1M for 12" Arm)



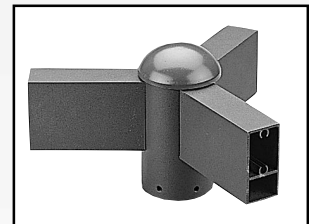
90° Twin (RTA290 for 6" Arm/RTA290M for 12" Arm)



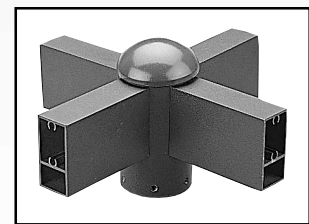
180° Twin (RTA2180 for 6" Arm/RTA2180M for 12" Arm)



90° Triple (RTA390 for 6" Arm/RTA390M for 12" Arm)



120° Triple (RTA3120 for 6" Arm/RTA3120M for 12" Arm)



90° Quad (RTA4 for 6" Arm/RTA4M for 12" Arm)