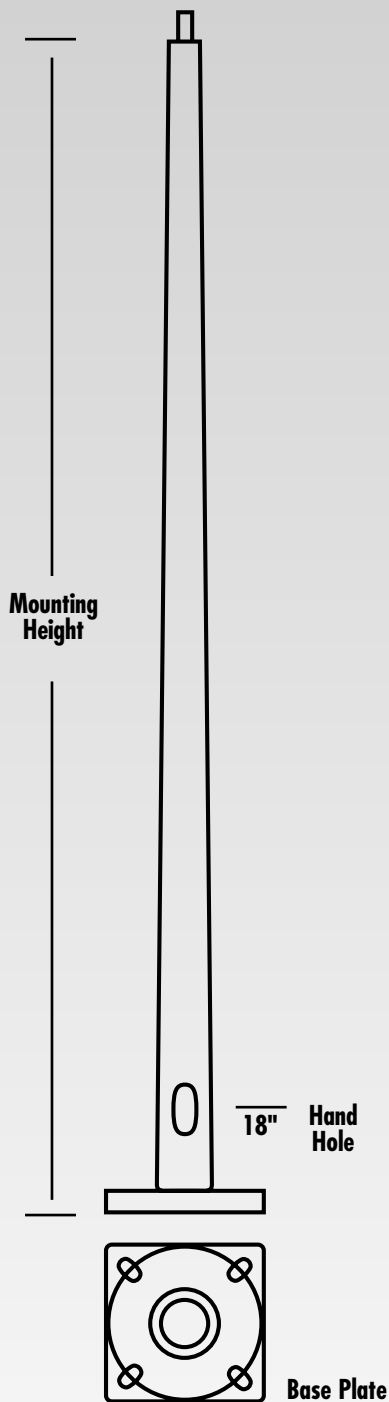


RTSP Series Round Tapered Steel Poles



Shaft

The shaft is fabricated from coil stock, weldable grade, hot rolled commercial quality carbon steel, guaranteed minimum yield strength 55,000 psi. The shaft has uniform taper of approximately .14" per foot and a wall thickness 11 ga. (.120 wall) or 7 ga. (.180 wall) as specified. The flushed, reinforced hand hole is furnished with a cover. A ground lug is located inside pole on the wall opposite hand hole.

Base Plate

Fabricated from structural quality hot rolled steel, the RTSP Series meets or exceeds minimum yield strength of 36,000 psi. The base telescopes into the pole and is circumferentially welded to the pole shaft. Bolt holes are slotted to provide flexibility on either side of the bolt circle centerline.

Anchorage

The 4 anchor bolts are fabricated from hot rolled steel bar with a minimum yield strength of 50,000 psi. Bolts have an "L" bend on one end and are threaded on the other end. Bolts are galvanized 12" from the top of the

thread and are furnished with two nuts and two washers. See next page for anchor bolt specifications.

Base Cover

Fabricated from heavy gauge quality carbon steel, the two piece cover conceals base. An ABS plastic version is supplied with some pole sizes.

Standard Finish

The RTSP Series is available with galvanized, prime coat and powder coat, specify type required.

Painted Finish

A choice of galvanized or painted finish is available. The painted finish consists of an electrostatically applied acrylic enamel over red oxide primer, specify color. Powder coat finishes are available on request.

Fixture Mounting

RTSP Series mounting options use either a 2-3/8" or a 2-7/8" tenon. See next page for mounting codes.

Round Tapered Steel Poles 11 Gauge

Pole Height	Catalog Number	Base Outer Diameter	Pole EPA Ratings			Max. Fix. Wt. (lbs) @ 80 MPH	Shipping Wt. (lbs.)
			Base Wind Velocity (MPH) With 1.3 Wind Gust Factor				
			80	90	100		
20'	RTSP-590A200P2-(a)(b)	5.9	19.3	15.1	12.2	482	140
	RTSP-650A200P2-(a)(b)	6.5	24.2	19.3	15.6	605	160
25'	RTSP-590A250PL-(a)(b)	5.9	12.5	9.9	8	312	155
	RTSP-700A250P2-(a)(b)	7	20.3	16.2	13.1	507	200
30'	RTSP-660A300PL-(a)(b)	6.6	11.7	9.3	7.5	292	200
	RTSP-800A300P2-(a)(b)	8	18.9	14.9	12	473	265
35'	RTSP-730A350PL-(a)(b)	7.3	11.2	8.9	7.1	280	250
	RTSP-850A350P2-(a)(b)	8.5	18.9	15.1	12.2	472	315
	RTSP-950A350P2-(a)(b)	9.5	23.2	18.2	14.5	580	370
39'	RTSP-782A389PL-(a)(b)	7.8	10.7	8.5	6.6	267	285
	RTSP-900A389P2-(a)(b)	9	17.2	13.5	10.8	430	355
45'	RTSP-T00A450P2-(a)(b)	10.0	17.4	13.5	10.6	435	450
	RTSP-T00A500P2-(a)(b)	10	13.2	10.6	8.3	330	475

Round Tapered Steel Poles 7 Gauge

30'	RTSP-800E300P2-(a)(b)	8	33.5	27	22	838	380
39'	RTSP-900E389P2-(a)(b)	9	28.5	23	19	715	515
50'	RTSP-T00E500P2-(a)(b)	10	20.5	16.5	13.6	512	680
	RTSP-E00E500P4-(a)(b)	11	29.9	23.5	18.6	748	812
	RTSP-H00E500P4-(a)(b)	13	50.4	39.7	31.4	1260	1020

Round Tapered Steel Poles 3 Gauge

50'	RTSP-H00J500P4-(a)(b)	13	69.2	55.0	44.2	1730	1335
-----	-----------------------	----	------	------	------	------	------

Other sizes available upon request.

(a) Pole Finish: Indicate finish in space (a)

Description	Prime	Bronze	Black	Galvanized
	P	BZ	BK	GLV

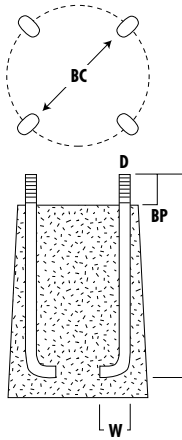
b) Mounting Code: See detail next page.

**Above information is only a guide.
Check manufacturer's specifications for correct data.**

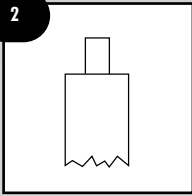
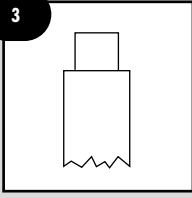
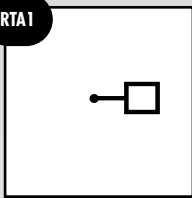
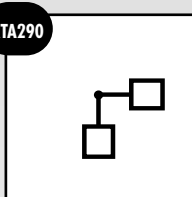
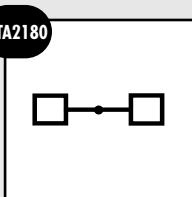
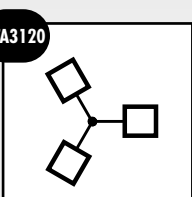
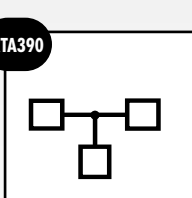
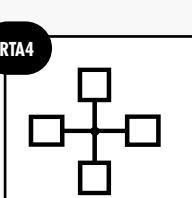
RTSP Series – Round Tapered Steel Pole Mountings

Mounting Code	
Description	SUFFIX
b) Mounting Code: Indicate mounting in space (b)	(b)
2-3/8" Tenon (Standard)	2
2-7/8" Tenon (Special Order)	3
One Fixture (Use Adaptor)	RTA1
Two Fixtures 90° (Use Adaptor)	RTA290
Two Fixtures 180° (Use Adaptor)	RTA2180
Three Fixtures 120° (Use Adaptor)	RTA3120
Three Fixtures 90° (Use Adaptor)	RTA390
Four Fixtures 90° (Use Adaptor)	RTA4

BC = Bolt Circle Diameter
 BP = Bolt Projection
 D = Anchor Bolt Diameter
 L = Anchor Bolt Length
 W = Anchor Bolt Width



*Above information is only a guide.
 Check manufacturer's specifications for correct
 bolt patterns and anchor bolts.*

2		2-3/8" Tenon
3		2-7/8" Tenon
RTA1		One Fixture
RTA290		Two Fixtures 90°
RTA2180		Two Fixtures 180°
RTA3120		Three Fixtures 120°
RTA390		Three Fixtures 90°
RTA4		Four Fixtures 90°

