

RTA Series Recessed Remote Electronic Ballast Enclosures

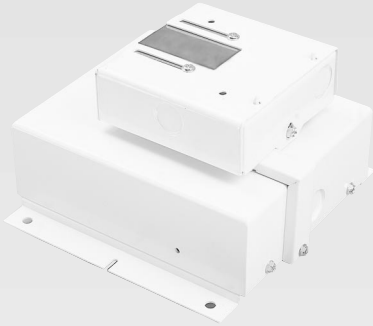


-20°C to 55°C Ambient Rated



RECESSED REMOTE

Dimensions	Fixture Length	Fixture Width	Fixture Depth	Approx. Ship Wt.
	7.6"	7.5"	4.5"	5.5Lbs.



Lamp **NOT** Included

True-sinusoidal, high frequency, fully dimmable electronic ballast for 350 - 450W Pulse Start metal halide lamps. Auto voltage input from 208-277 volts with a no-short, no-fail feature. Potted fabricated heavy duty aluminum housing. Can be remote mounted up to 10 feet. Internal cut out for over temperature.

- Full power in <1 minute & full light output in <1.5 minutes
- Light weight
- No-Short No-Fail™ wiring installation
- Auto-Voltage Input (208-277V)(50-60Hz AC, DC)
277V is required for all 450W Pulse Start Metal Halide fixtures.
- True-sinusoidal, high-frequency lamp drive
- ± 3% lamp power regulation over line and lamp variations
- Auto compatible with AC or DC
- Flicker-Free
- Operates in ambient (still air) from -20°C to 55°C
- Superior color and lumen maintenance
- Stays lit over wide line voltage variations
- Full Dimming Range – to 135 System Watts
- Potted ballast
- Silent operation sound rated A
- Ideal crest factors of 1.4

Recessed Remote – RTA Series Order Information

Catalog Numbers

Wattage	Split-Box
350W MH/PS	RTA0835-(a)(b)
400W MH	RTA0440-(a)(b)
400W MH/PS	RTA0840-(a)(b)
450W MH/PS	RTA0845-2(b)

(a)Voltage Suffix Key: Indicate voltage in space (a)

Auto Voltage Input (350-400W Only) **(A)**

(b)Options: Indicate options in space (b) (Factory Installed)

Quartz Standby (ETL Listed)

Q

400W MH/PS LINE SIDE CHARACTERISTICS @ VOLT IN				
	208V in	220V in	240V in	277V in
<i>THD %</i>	<7	<7	<7	<7
<i>Max K Factor %</i>	1.5	1.5	1.5	1.5
<i>Min Power Factor %</i>	99	99	99	99
BALLAST LINE CURRENT DATA				
	208V in	220V in	240V in	277V in
<i>Starting Current</i>	0.06	0.071	0.072	0.065
<i>Operating Current</i>	2.05	1.93	1.77	1.54
GENERAL INFORMATION				
	208V in	220V in	240V in	277V in
<i>System Efficiency %</i>	>94	>94	>94	>94
<i>Ballast Factor at 413 System Watts</i>	1.2	1.2	1.2	1.2
<i>Light output at 135 System Watts (Full Dim)</i>	12	12	12	12

Applies to both RTA/RTC



-20°C to 55°C Ambient Rated

Remote – RTC Series Order Information

Catalog Numbers

Wattage	Split-Box
350W MH/PS	RTC0835-(a)(b)
400W MH	RTC0440-(a)(b)
400W MH/PS	RTC0840-(a)(b)
450W MH/PS	RTC0845-2(b)

(a) Voltage Suffix Key: Indicate voltage in space (a)

Auto Voltage Input (350-400W Only) (A)

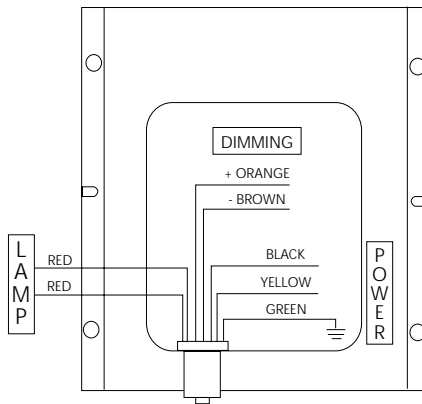
(b) Options: Indicate options in space (b) (Factory Installed)

Quartz Standby (ETL Listed) Q

Accessories: (Field Installed)

Mounting Hook - 3/4" Thread with Safety Snap-Lok™ HKSC

Swivel Pendant SP



RTC Series Remote Electronic Ballast Enclosures

Dimensions	Fixture Length	Fixture Width	Fixture Depth	Approx. Ship Wt.
	7.6"	7.5"	4.5"	5.5Lbs.



Lamp **NOT** Included

True-sinusoidal, high frequency, fully dimmable electronic ballast for Pulse Start metal halide lamps. Auto voltage input from 208-277 volts with a no-short, no-fail feature. Potted fabricated heavy duty aluminum housing. Can be remote mounted up to 10 feet. Auto external designed for recessed applications. 3/4" Hook or Pendant Mount options are available.

- Full power & light output in <1 minute
- Light weight
- No-Short No-Fail™ wiring installation
- Auto-Voltage Input (208-277V) (50-60Hz AC, DC)
277V is required for all 450W Pulse Start Metal Halide fixtures.
- True-sinusoidal, high-frequency lamp drive
- Open lamp protection
- ± 3% lamp power regulation over line and lamp variations
- Auto compatible with AC or DC
- Flicker-Free
- Operates in ambient from -20°C to 55°C
- Superior color and lumen maintenance
- Stays lit over wide line voltage variations
- Full Dimming Range – down to 135 System Watts
- Potted ballast
- Silent operation sound rated A
- Ideal crest factors of 1.4