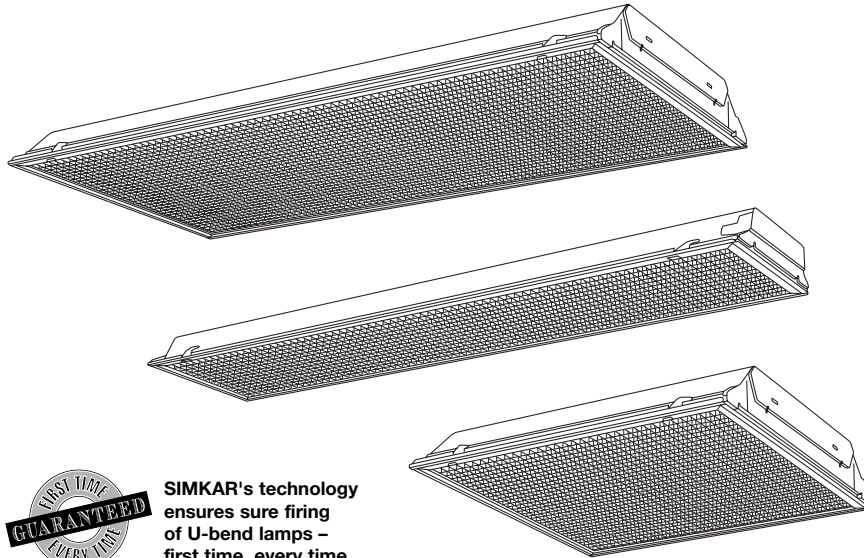


CATALOG NUMBER	TYPE

Troffer, Small Cell Louver

TA

1' x 4', 2' x 2', 2' x 4'



SIMKAR's technology ensures sure firing of U-bend lamps – first time, every time

Housing: Die-formed heavy gauge steel with high-gloss baked white enamel finish (minimum reflectance 86%) over rust inhibiting phosphate coat. X prefix specifies durable high gloss powder coat post paint finish (90% reflectance) over rust inhibiting phosphate coat. Flush white steel door frame with mitered corners can be hinged from either side. Access plate providing two knockouts and grounding screw.

Shielding: 1/2" x 1/2" x 1/2" cell louver. Specular silver or gold finishes available.

Electrical: Fully wired for 120V, 60Hz AC operation, thermally protected, automatic resetting, Class P, sound rated A, high-power factor ballast, unless otherwise specified. Electronic T8 shall be instant start, <20% harmonic distortion standard, specify suffix UNV for <10% harmonic distortion. Specify suffix UNV for universal voltage, 120 through 277V, 50/60Hz AC operation, Electronic T8 only. End of life protection is standard on twin tube fixtures. UL and C-UL listed.

Mounting: Lay-in (T) or Flange (F) troffer. 2 x 2 and 2 x 4 flanged fixtures require field assembly.

Critical Application: SIMKAR strives to offer the most current product designs and value. Consequently, all SIMKAR products are subject to redesign and revision. Critical applications such as size, operating temperature, or sensor operation should be confirmed with the factory.

FEATURES AND BENEFITS

- | | | |
|--|---|---|
| 1/2" cell louver | ➤ | Uniform low brightness control |
| Metal light trap standard | ➤ | Does not deteriorate like some gasketing |
| Swing action cam latches | ➤ | Easy access with no tools needed |
| Built-in T-bar clips | ➤ | Safely and securely hold fixture to T-bar |
| Upturned side rails and hemmed end plate | ➤ | For strength and safer handling |

ORDERING INFORMATION

Example: TAFW244332B11S120V

MOUNTING	SPEC DOOR	SIZE	LAMPS	BALLAST	SPECIAL FEATURE	VOLTAGE
T - Lay-In	White steel,	122 - 1 x 2	132 - (1) 32W U6" T8	B10 - Magnetic TT	20G - 20 gauge	120V
F - Flange	standard	124 - 1 x 4	217 - (2) 17W 24" T8	B11 - Electronic T8	FL - Flex, see page 37	277V
XF - Powder coat, flange	FW - Flat white aluminum	242 - 2 x 2	232U - (2) 32W U6" T8*	B14 - Electronic TT	HR - Heat removal, see page 38	UNV - 120-277V
XT - Powder coat, lay-in	RB - Regressed black	244 - 2 x 4	232 - (2) 32W 48" T8	E1 - Energy Saving Magnetic T12	L - Lamps	
	RW - Regressed white	484 - 4 x 4†	240 - (2) 34 or 40W 48" T12		Reflectors, see page 36	
			240U - (2) 40W U6" T12		B - Black door	
			240TT - (2) 40W 22" TT		G - Specular gold louver	
			332U - (3) 32W U 1 5/8" T8		S - Specular silver louver	
			332 - (3) 32W 48" T8			
			340 - (3) 34 or 40W 48" T12			
			340TT - (3) 34 or 40W 22" TT			
			432 - (4) 32W 48" T8			
			440 - (4) 34 or 40W 48" T12			
			632 - (6) 32W 48" T8			
			640 - (6) 34 or 40W 48" T12			
			832 - (8) 32W 48" T8			
			840 - (8) 34 or 40W 48" T12			

A LOUVER

Specify silver or gold finish in Special Feature

A - 1/2" x 1/2" x 1/2" cell

*For 1 5/8" please specify
 †Available with white steel door frame only and (2) 2 x 4 louvers
 For additional information, see chart on pages 39-41.

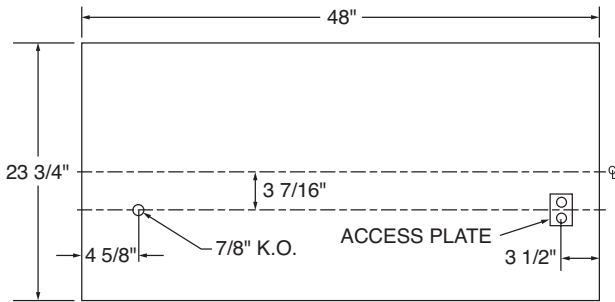
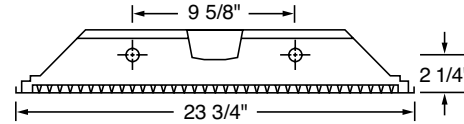
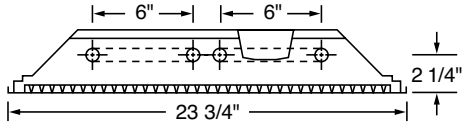
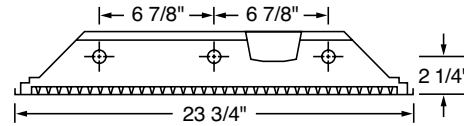
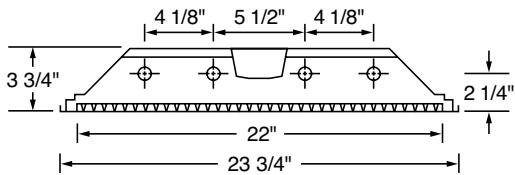
Troffer, Small Cell Louver 1' x 4', 2' x 2', 2' x 4'

PHOTOMETRIC DATA, 4-32W 2 x 4 Model

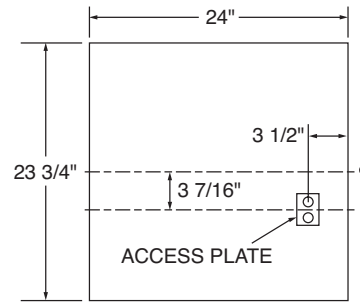
CANDLEPOWER				LIGHT GUIDE (T8 LAMPS AND ELECTRONIC BALLAST)				COEFFICIENT OF UTILIZATION										
Angle	0	45	90	Area/fixture in sq.ft./lg. room, good conditions - 8' to 10' ceilings				RC	80			70			50			
				Footcandles	2-"U" 6"	3-32W	4-32W	RW	70	50	30	70	50	30	50	30	50	30
0	3390	3390	3390					RCR	1	64	63	61	63	61	60	59	58	
5	3377	3402	3417	35	71	113	144	2	61	58	55	59	57	54	55	53		
15	3207	3312	3339	50	50	99	101	3	57	53	49	56	52	49	50	48		
25	2901	3036	3190	75	33	53	67	4	53	48	44	52	48	44	46	43		
35	2484	2685	2908	100	25	40	50	5	50	44	40	49	43	40	42	39		
45	1921	2177	2494	AVERAGE LUMINANCE CD/SQ.M				TYPICAL V.C.P.s				LIGHT DISTRIBUTION						
55	275	544	311	Angle	0	45	90	Room Size	Mounting Height			Zone	Lumens	%Lamp	%Fixture			
65	0	0	0	45	4161	4715	5402	30x30	8.5	10	8.5	10	0-30	2664	23.4	40.9		
75	0	0	0	55	734	1453	830	40x40	87	93	84	91	0-40	4348	38.1	66.7		
85	0	0	0	65	0	0	0	60x30	87	93	84	91	0-60	6518	57.2	100.0		
90	0	0	0	75	0	0	0	60x60	88	93	85	92	0-90	6519	57.2	100.0		
				85	0	0	0	100x100	88	93	85	92						

Lamps = (4) F32 T8 @ 2850 lumens ea. Input Watts = 100.1 LER = 52.5 Test #02872 & 77 Ballast = Electronic 120V Ballast Factor = .525 S/MH: 0° = 1.2; 90° = 1.3
 Note: 2x2 model with 2-31W T8 U-6 has LER = 49.5, Ballast Factor = .949, Input Watts = 55.8
 Comparative yearly lighting energy cost per 1000 lumens: 2x2 = \$4.84 and 2x4 = \$4.57 based on 3000 hrs. and \$.08 per KWH

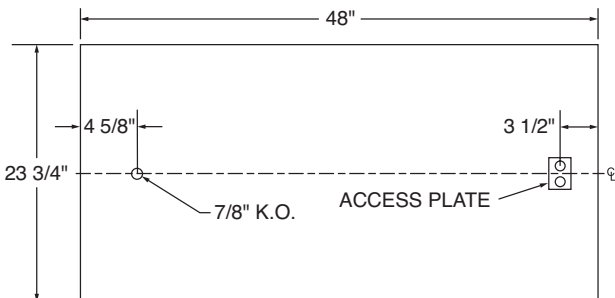
DRAWINGS AND DIMENSIONS



3 Lamp 2 x 4



3 Lamp or U Lamp 2 x 2

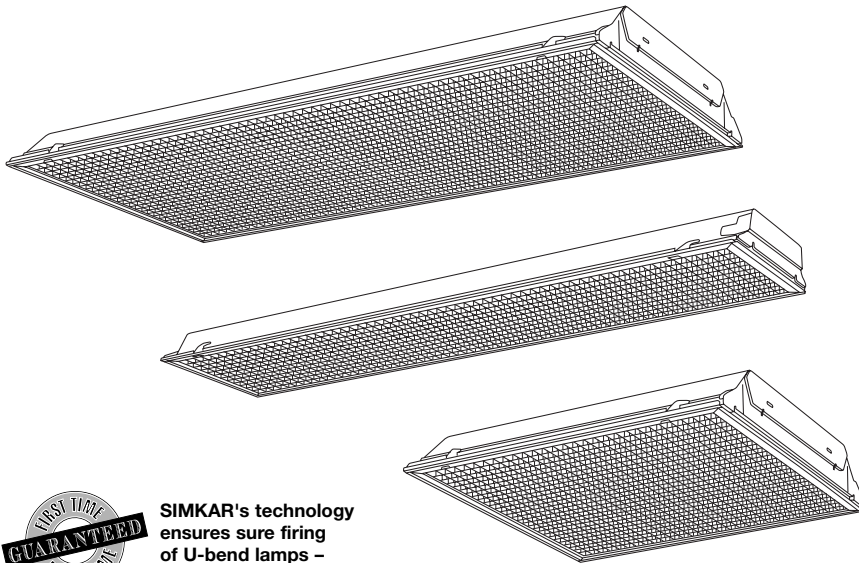


2 or 4 Lamp 2 x 4

CATALOG NUMBER	TYPE

Troffer, CRT Louver TJ, TJ5, TT, TT5

1' x 4', 2' x 2', 2' x 4'



SIMKAR's technology ensures sure firing of U-bend lamps - first time, every time

Housing: Die-formed heavy gauge steel with high-gloss baked white enamel finish (minimum reflectance 86%) over rust inhibiting phosphate coat. X prefix specifies durable high gloss powder coat post paint finish (90% reflectance) over rust inhibiting phosphate coat. Flush white steel door frame with mitered corners can be hinged from either side. Access plate providing two knockouts and grounding screw.

Shielding: Specular silver or gold finishes available. Specify TT or T5 louver for CRT white transmission overlay.

Electrical: Fully wired for 120V, 60Hz AC operation, thermally protected, automatic resetting, Class P, sound rated A, high-power factor ballast, unless otherwise specified. Electronic T8 shall be instant start, <20% harmonic distortion standard, specify suffix UNV for <10% harmonic distortion. Specify suffix UNV for universal voltage, 120 through 277V, 50/60Hz AC operation, Electronic T8 only. End of life protection is standard on twin tube fixtures. UL and C-UL listed.

Mounting: Lay-in (T) or Flange (F) troffer. 2 x 2 and 2 x 4 flanged fixtures require field assembly.

Critical Application: SIMKAR strives to offer the most current product designs and value. Consequently, all SIMKAR products are subject to redesign and revision. Critical applications such as size, operating temperature, or sensor operation should be confirmed with the factory.

FEATURES AND BENEFITS

- CRT louver with overlay ➤ Efficiently directs light to work surface while overlay reduces glare
- Metal light trap standard ➤ Does not deteriorate like some gasketing
- Swing action cam latches ➤ Easy access with no tools needed
- Built-in T-bar clips ➤ Safely and securely hold fixture to T-bar
- Upturned side rails and hemmed end plate ➤ For strength and safer handling

ORDERING INFORMATION

Example: TJ244332B11FL4120V

MOUNTING	SPEC DOOR	SIZE	LAMPS	BALLAST	SPECIAL FEATURE	VOLTAGE
T - Lay-In	White steel,	124 - 1 x 4	232 - (2) 32W 48" T8	B10 - Magnetic TT	Reflectors, see page 36	120V
F - Flange	standard	242 - 2 x 2	232U - (2) 32W U6" T8*	B11 - Electronic T8	FL - Flex, see page 37	277V
XF - Powder coat, flange	FW - Flat white aluminum	244 - 2 x 4	240 - (2) 34 or 40W 48" T12	B14 - Electronic TT	HR - Heat removal, see page 36	UNV - 120-277V
XT - Powder coat, lay-in	RB - Regressed black	484 - 4 x 4 [†]	240U - (2) 40W U6" T12	E1 - Energy Saving Magnetic T12	B - Black door	
	RW - Regressed white		240TT - (2) 40W 22" TT		G - Specular gold louver	
			332 - (3) 32W 48" T8		S - Specular silver louver	
			332U - (3) 32W U 1 5/8" T8			
			340 - (3) 34 or 40W 48" T12			
			432 - (4) 32W 48" T8			
			440 - (4) 34 or 40W 48" T12			
			632 - (6) 32W 48" T8			
			640 - (6) 34 or 40W 48" T12			
			832 - (8) 32W 48" T8			
			840 - (8) 34 or 40W 48" T12			
LOUVER						
Specify silver or gold finish in Special Feature						
J - 3/4" x 3/4" x 1/2" Double Wedge Cell						
J5 - 3/4" x 3/4" x 3/8" Shallow Wedge						
T - 3/4" x 3/4" x 1/2" Double Wedge Cell CRT Overlay						
T5 - 3/4" x 3/4" x 3/8" Shallow Wedge CRT Overlay						
				* For 1 5/8" please specify		
				† Available with white steel door frame only and (2) 2 x 4 louvers		
For additional information, see chart on pages 39-41.						

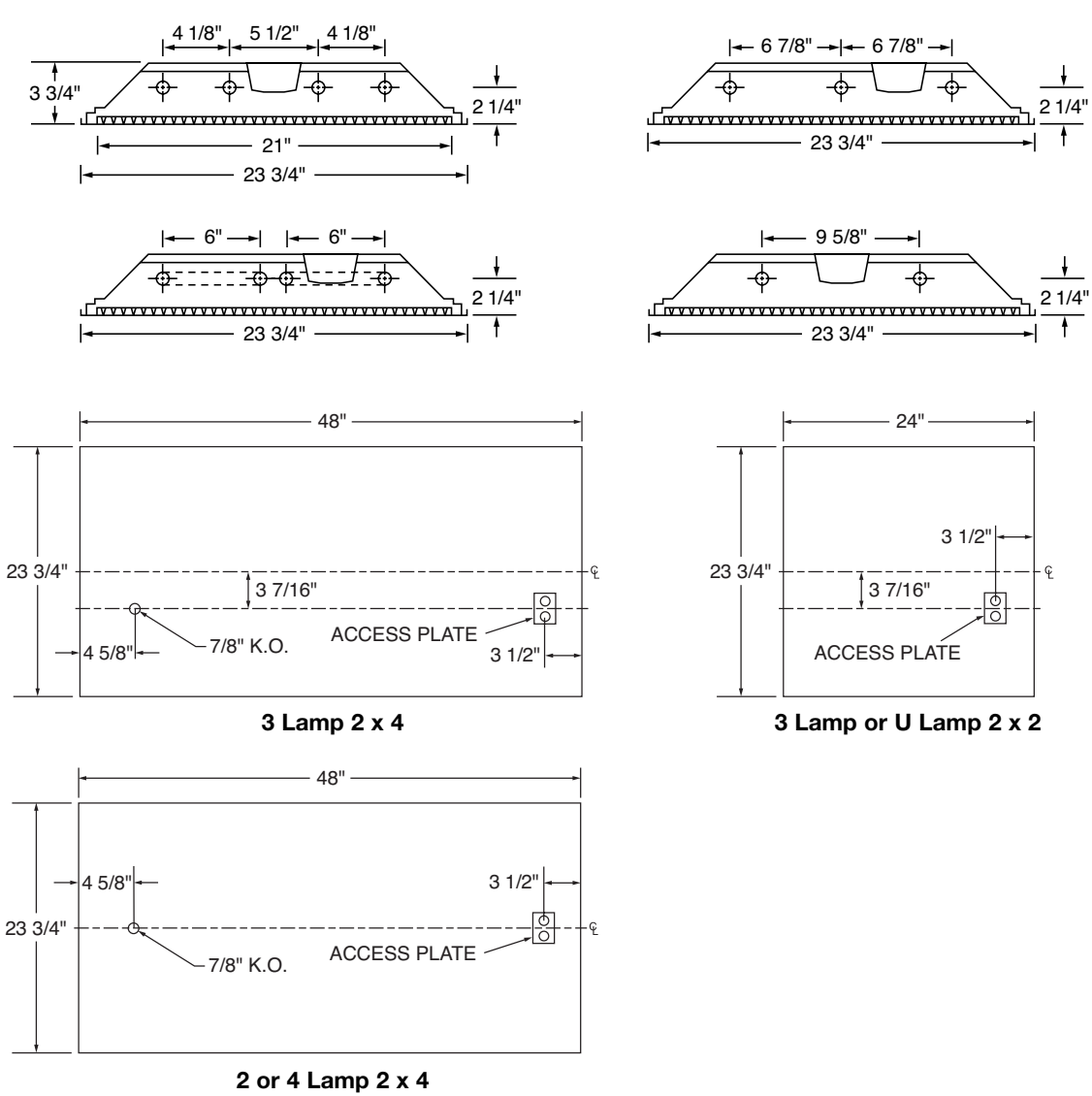
Troffer, CRT Louver 1' x 4', 2' x 2', 2' x 4'

PHOTOMETRIC DATA, TJ 4-32W 2 x 4 Specular Silver Model

CANDLEPOWER				LIGHT GUIDE (T8 LAMPS AND ELECTRONIC BALLAST)				COEFFICIENT OF UTILIZATION													
Angle	0	45	90	Area/fixture in sq.ft./lg. room, good conditions - 8' to 10' ceilings				RC	80	70	50	30	70	50	30	50	30				
				Footcandles		2-"U" 6"		3-32W		4-32W		RW	70	50	30	50	30				
0	3165	3165	3165	35	82	132	166	1	75	73	71	73	71	69	68	67	67				
5	3151	3164	3175	50	58	92	117	2	70	66	62	68	65	62	62	60	60				
15	3019	3093	3149	75	38	62	78	3	65	60	55	64	59	55	57	53	53				
25	2777	2909	3010	100	29	46	58	4	60	54	49	59	53	48	51	47	47				
35	2430	2636	2826	AVERAGE LUMINANCE CD/SQ.M				TYPICAL V.C.P.s				5	55	48	43	54	47	42	46	42	
45	1991	2275	2502									Room	Mounting Height			6	51	43	38	50	43
55	1394	1671	1630	Angle	0	45	90	Size	Lengthwise			7	47	39	33	46	38	33	37	33	
65	93	237	116	45	4618	5277	5803	30x30	8.5	10	8.5	10	8	43	35	29	42	34	29	33	29
75	0	0	0	55	3986	4778	4661	40x40	79	75	77	73	9	40	31	26	39	31	25	30	25
85	0	0	0	65	361	920	450	60x30	80	75	77	73	10	37	28	23	36	28	23	27	22
90	0	0	0	75	0	0	0	60x60	80	75	77	73	LIGHT DISTRIBUTION								
				85	0	0	0	100x100	80	76	78	73									Zone
													0-30	2516	22.1	32.9					
													0-40	4168	36.6	54.4					
													0-60	7342	64.4	95.9					
													0-90	7654	67.1	100.0					

Lamps = (4) F32 T8 @ 2850 lumens ea. Input Watts = 101.6 LER = 60.7 Test #02874 Ballast = 1-4 Light Electronic Ballast Factor = .800 S/MH: 0° = 1.2; 90° = 1.4
Comparative yearly lighting energy cost per 1000 lumens = \$3.95 based on 3000 hrs. and \$.08 per KWH

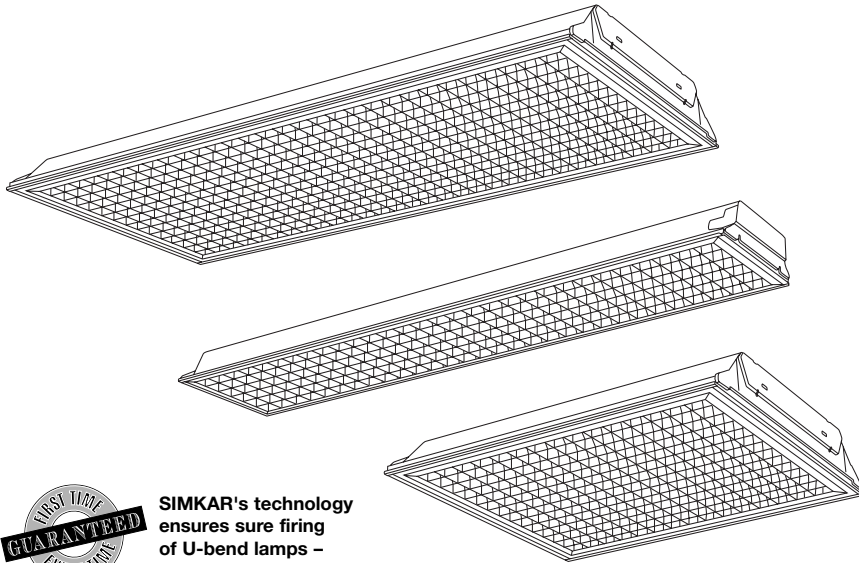
DRAWINGS AND DIMENSIONS



Troffer, Supercube TS

1' x 4', 2' x 2', 2' x 4'

CATALOG NUMBER	TYPE



SIMKAR's technology ensures sure firing of U-bend lamps – first time, every time

Housing: Die-formed heavy gauge steel with high-gloss baked white enamel finish (minimum reflectance 86%) over rust inhibiting phosphate coat. X prefix specifies durable high gloss powder coat post paint finish (90% reflectance) over rust inhibiting phosphate coat. Flush white steel door frame with mitered corners can be hinged from either side. Access plate providing two knockouts and grounding screw.

Shielding: 1 1/2" x 1 1/2" x 1" cell louver. Specular silver or gold finishes available.

Electrical: Fully wired for 120V, 60Hz AC operation, thermally protected, automatic resetting, Class P, sound rated A, high-power factor ballast, unless otherwise specified. Electronic T8 shall be instant start, <20% harmonic distortion standard, specify suffix UNV for <10% harmonic distortion. Specify suffix UNV for universal voltage, 120 through 277V, 50/60Hz AC operation, Electronic T8 only. End of life protection is standard on twin tube fixtures. UL and C-UL listed.

Mounting: Lay-in (T) or Flange (F) troffer. 2 x 2 and 2 x 4 flanged fixtures require field assembly.

Critical Application: SIMKAR strives to offer the most current product designs and value. Consequently, all SIMKAR products are subject to redesign and revision. Critical applications such as size, operating temperature, or sensor operation should be confirmed with the factory.

FEATURES AND BENEFITS

- 1 1/2" x 1 1/2" x 1" Supercube ➤ Glare reducing, excellent light control
- Metal light trap standard ➤ Does not deteriorate like some gasketing
- Swing action cam latches ➤ Easy access with no tools needed
- Built-in T-bar clips ➤ Safely and securely hold fixture to T-bar
- Upturned side rails and hemmed end plate ➤ For strength and safer handling

ORDERING INFORMATION

Example: TS244332B11120V

S						
MOUNTING	SPEC DOOR	SIZE	LAMPS	BALLAST	SPECIAL FEATURE	VOLTAGE
T - Lay-In	White steel,	122 - 1 x 2	132 - (1) 32W U6" T8	B10 - Magnetic TT	20G - 20 gauge	120V
F - Flange	standard	124 - 1 x 4	217 - (2) 17W 24" T8	B11 - Electronic T8	FL - Flex, see page 37	277V
XF - Powder coat, flange	FW - Flat white aluminum	242 - 2 x 2	232U - (2) 32W U6" T8*	B14 - Electronic TT	HR - Heat removal, see page 36	UNV - 120-277V
XT - Powder coat, lay-in	RB - Regressed black	244 - 2 x 4	232 - (2) 32W 48" T8	E1 - Energy Saving Magnetic T12	L - Lamps	
	RW - Regressed white	484 - 4 x 4†	240 - (2) 34 or 40W 48" T12		Reflectors, see page 36	
			240U - (2) 40W U6" T12		B - Black door	
			240TT - (2) 40W 22" TT		G - Specular gold louver	
			332U - (3) 32W U 1 5/8" T8		S - Specular silver louver	
			332 - (3) 32W 48" T8			
			340 - (3) 34 or 40W 48" T12			
			340TT - (3) 34 or 40W 22" TT			
			432 - (4) 32W 48" T8			
			440 - (4) 34 or 40W 48" T12			
			632 - (6) 32W 48" T8			
			640 - (6) 34 or 40W 48" T12			
			832 - (8) 32W 48" T8			
			840 - (8) 34 or 40W 48" T12			

LOUVER

Specify silver or gold finish in Special Feature
S - 1 1/2" x 1 1/2" x 1" cell

* For 1 5/8" please specify

† Available with white steel door frame only and (2) 2 x 4 louvers

For additional information, see chart on pages 39-41.

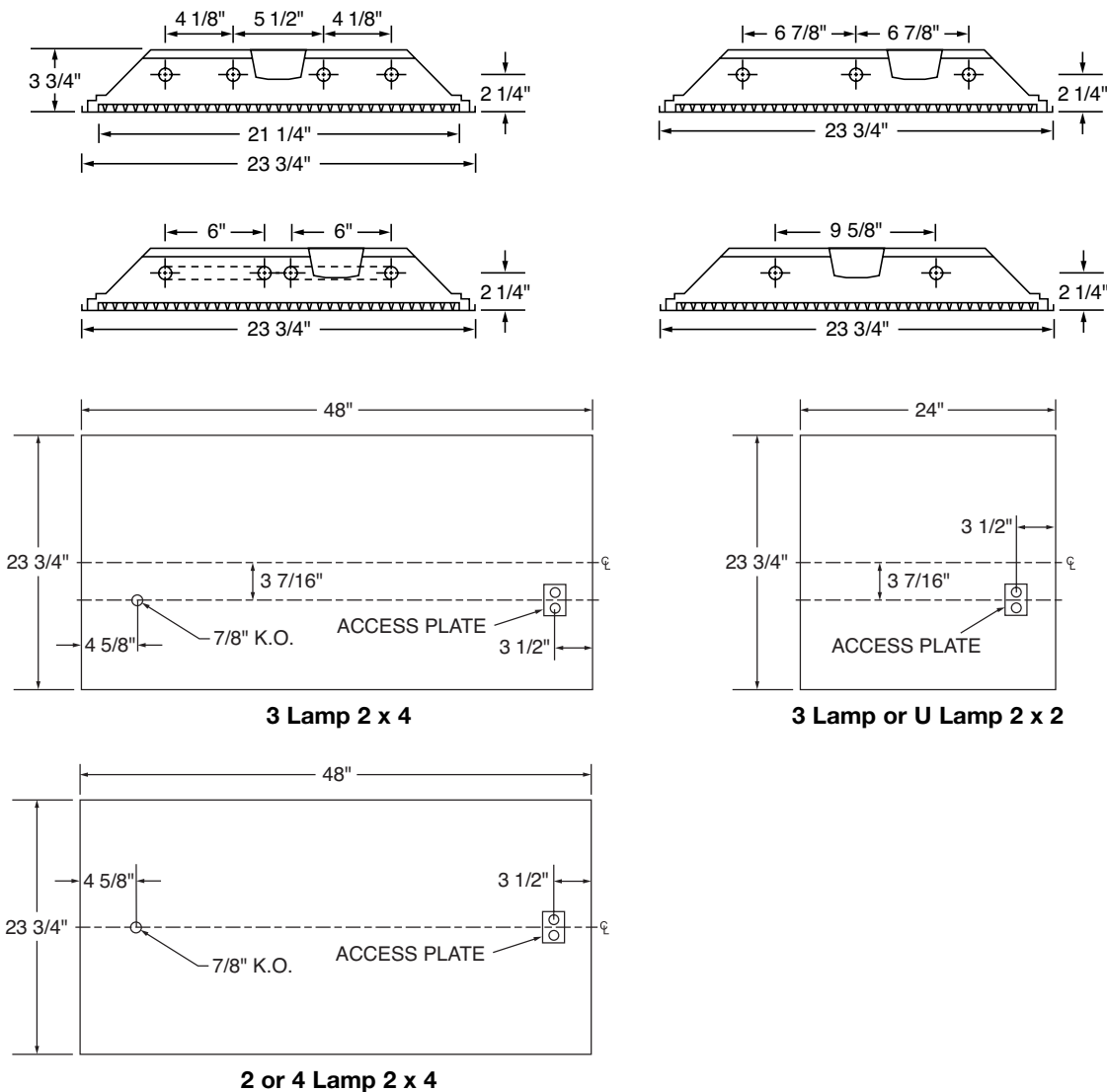
Troffer, Supercube 1' x 4', 2' x 2', 2' x 4'

PHOTOMETRIC DATA, 4-32W 2 x 4 Model

CANDLEPOWER				LIGHT GUIDE (T8 LAMPS AND ELECTRONIC BALLAST)				COEFFICIENT OF UTILIZATION										
Angle	0	45	90	Area/fixture in sq.ft./lg. room, good conditions - 8' to 10' ceilings				RC	80			70			50			
				2-"U" 6"		3-32W	4-32W	RW	70	50	30	70	50	30	50	30	50	30
0	2995	2995	2995	Footcandles				RCR	1	63	61	59	61	60	58	57	56	56
5	2991	3006	3019	35	57	91	116	2	59	56	53	58	55	52	53	51	51	51
15	2868	3010	3052	50	40	63	81	3	55	51	48	54	50	47	49	46	46	46
25	2625	2840	2963	75	27	42	54	4	51	46	43	50	46	42	45	42	42	42
35	2277	2598	2793	100	20	32	41	5	48	42	38	47	42	38	41	37	37	37
45	1803	2229	2554	AVERAGE LUMINANCE CD/SQ.M				TYPICAL V.C.P.s				LIGHT DISTRIBUTION						
55	237	778	449	Angle	0	45	90	Room Size	Mounting Height			Zone	Lumens	%Lamp	%Fixture			
65	1	0	0	45	4440	5490	6290	30x30	8.5	10	8.5	10	0-30	2436	21.4	38.4		
75	0	0	0	55	720	2362	1363	40x40	84	90	80	87	0-40	4050	35.5	63.8		
85	0	0	0	65	4	0	0	60x30	84	91	80	87	0-60	6348	55.7	100.0		
90	0	0	0	75	0	0	0	60x60	85	91	81	87	0-90	6349	55.7	100.0		
				85	0	0	0	100x100	85	91	81	87						

Lamps = (4) F32 T8 @ 2850 lumens ea. Input Watts = 101.5 LER = 50.4 Test #02873 Ballast = Electronic Ballast Factor = .806 S/MH: 0° = 1.2; 90° = 1.4
 Note: 2x2 model with 2-31W T8 U-6, LER = 43.6 Ballast Factor = 94.9% Input Watts = 55.8
 Comparative yearly lighting energy cost: 2x2 = \$5.50, 2x4 = \$4.76 based on 3000 hrs. and \$.08 per KWH

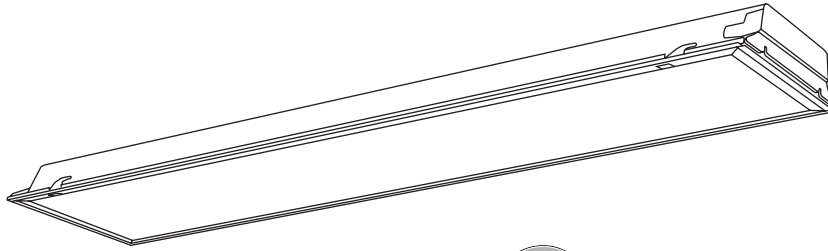
DRAWINGS AND DIMENSIONS



CATALOG NUMBER	TYPE

Versatile Troffer and Lens TY, TB, TC, TE, TK, TL, TN, TO, TP, TQ, TU, TW, TX, TZ

1' x 2', 1' x 4'



SIMKAR's technology ensures sure firing of U-bend lamps - first time, every time

FEATURES AND BENEFITS

Versatile and efficient louver and lens options	➤	Ideal when quality and value are desired
Metal light trap standard	➤	Does not deteriorate like some gasketing
Swing action cam latches	➤	Easy access with no tools needed
Built-in T-bar clips	➤	Safely and securely hold fixture to T-bar
Upturned side rails and hemmed end plate	➤	For strength and safer handling
Lamp-pin slots	➤	Ease of lamp installation
Built-in door hinge	➤	Allows door to hinge or latch from either side

Housing: Die-formed heavy gauge steel with high-gloss baked white enamel finish (minimum reflectance 86%) over rust inhibiting phosphate coat. X prefix specifies durable high gloss powder coat post paint finish (90% reflectance) over rust inhibiting phosphate coat. Flush white steel door frame (TE standard with black) with mitered corners can be hinged from either side. Access plate providing two knockouts and grounding screw.

Shielding: A variety of acrylic lens and louvers available. Specular silver or gold finishes available.

Electrical: Fully wired for 120V, 60Hz AC operation, thermally protected, automatic resetting, Class P, sound rated A, high-power factor ballast, unless otherwise specified. Electronic T8 shall be instant start, <20% harmonic distortion standard, specify suffix UNV for <10% harmonic distortion. Specify suffix UNV for universal voltage, 120 through 277V, 50/60Hz AC operation, Electronic T8 only. End of life protection is standard on twin tube fixtures. UL and C-UL listed.

Mounting: Lay-in (T) or Flange (F) troffer.

Critical Application: SIMKAR strives to offer the most current product designs and value. Consequently, all SIMKAR products are subject to redesign and revision. Critical applications such as size, operating temperature, or sensor operation should be confirmed with the factory.

ORDERING INFORMATION

Example: TY124232B11120V

MOUNTING	SPEC DOOR	SIZE	LAMPS	BALLAST	SPECIAL FEATURE	VOLTAGE
T - Lay-In	White steel, standard	122 - 1 x 2 124 - 1 x 4	132 - (1) 32W U6" T8 132 - (1) 32W 48" T8 140 - (1) 34 or 40W 48" T12 217 - (2) 17W 24" T8 232 - (2) 32W 48" T8 240 - (2) 34 or 40W 48" T12 240TT - (2) 40W 22" TT 332 - (3) 32W 48" T8 340 - (3) 34 or 40W 48" T12	B10 - Magnetic TT B11 - Electronic T8 B14 - Electronic TT E1 - Energy Saving Magnetic T12	FL - Flex, see page 37 HR - Heat removal, see page 36 L - Lamps Reflectors, see page 36 B - Black door G - Specular gold louver S - Specular silver louver	120V 277V UNV - 120-277V

LOUVER / LENS

B - .125 polycarbonate	N - Injection molded acrylic prismatic	U - .156 prismatic acrylic
C - .200 P15	O - .140 High impact	X - Parahex louver*
E - Shallow parabolic*†	P - Acrylic drop dish	Y - Standard A12 prismatic acrylic
K - .125 prismatic acrylic	Q - .125 RFI #12	Z - Customer specified
L - 1/2" x 1/2" x 3/8" egg crate, white		

* Specify silver or gold finish under Special Feature
† 1 x 4 with 26 cells (2 rows of 13)

For additional information, see chart on pages 39-41.

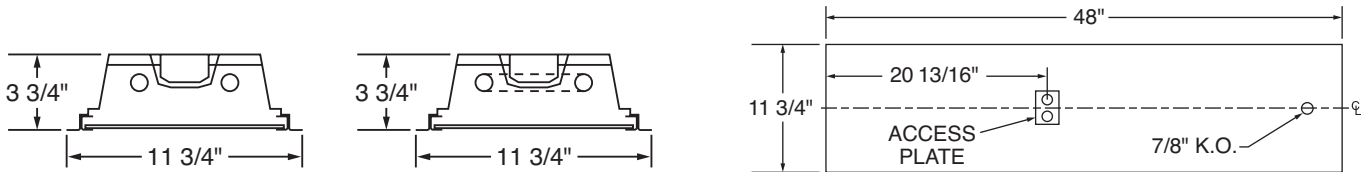
Versatile Troffer and Lens 1' x 2', 1' x 4'

PHOTOMETRIC DATA, TY 2-32W 1 x 4 Model

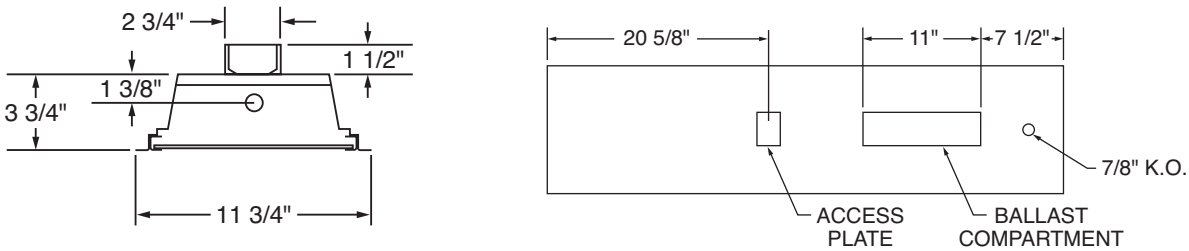
CANDLEPOWER				LIGHT GUIDE (T8 LAMPS AND ELECTRONIC BALLAST)				COEFFICIENT OF UTILIZATION														
Angle	0	45	90	Area/fixture in sq.ft./lg. room, good conditions - 8' to 10' ceilings				RC	80			70			50							
				Footcandles				RW	70	50	30	70	50	30	50	30	50	30				
0	1631	1631	1631		2-32W			RCR														
5	1617	1630	1627	35				1	69	67	64	68	65	63	63	61						
15	1557	1581	1590	50				2	64	59	55	62	58	54	56	53						
25	1416	1449	1452	75				3	59	53	48	57	52	48	50	46						
35	1190	1191	1176	100				4	54	47	42	53	47	42	45	41						
45	859	838	820		AVERAGE LUMINANCE CD/SQ.M				5	50	43	38	49	42	37	41	37					
55	527	496	495		Angle	0	45	90	Zone	Lumens	%Lamp	%Fixture		6	47	39	34	46	38	33	37	33
65	294	223	275	45	4174	4072	3985		0-30	1262	22.1	35.3		7	44	36	30	42	35	30	34	30
75	187	131	171	55	3157	2972	2966		0-40	1999	35.1	55.9		8	41	33	28	40	32	27	31	27
85	68	53	54	65	2391	1813	2236		0-60	3098	54.3	86.6		9	38	30	25	37	30	25	29	25
90	10	7	5	75	2483	1739	2270		0-90	3575	62.7	100.0		10	36	28	23	35	28	23	27	23
				85	2681	2090	2129															

Lamps = (2) F32T8 @ 2850 lumens ea. Input Watts = 56.0 LER = 59.9 Test #02880 Ballast = Electronic Ballast Factor = 93.6% S/MH: 0° = 1.2; 90° = 1.2
Comparative yearly lighting energy cost per 1000 lumens = \$4.01 based on 3000 hrs. and \$.08 per KWH

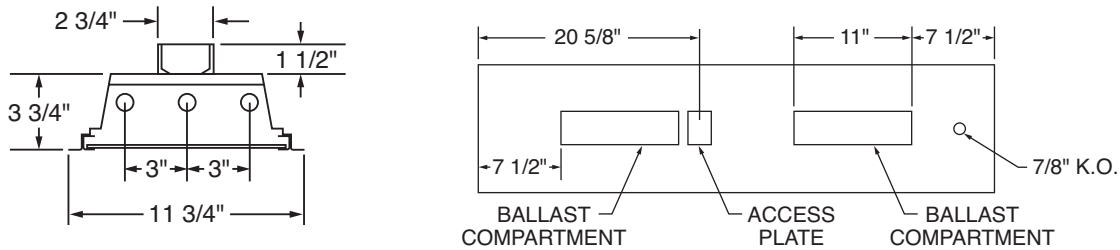
DRAWINGS AND DIMENSIONS



2 Lamp 1 x 4 Model



1 Lamp 1 x 4 Model

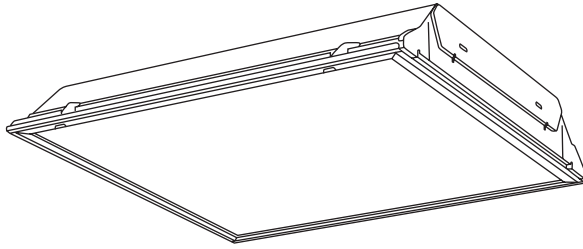


3 Lamp 1 x 4 Model

CATALOG NUMBER	TYPE

Versatile Troffer and Lens TY, TB, TC, TE, TK, TL, TN, TO, TP, TQ, TU, TW, TX, TZ

2' x 2'



SIMKAR's technology
ensures sure firing
of U-bend lamps –
first time, every time

Housing: Die-formed heavy gauge steel with high-gloss baked white enamel finish (minimum reflectance 86%) over rust inhibiting phosphate coat. X prefix specifies durable high gloss powder coat post paint finish (90% reflectance) over rust inhibiting phosphate coat. Flush white steel door frame (TE standard with black) with mitered corners can be hinged from either side. Access plate providing two knockouts and grounding screw.

Shielding: A variety of acrylic lens and louvers available. Specular silver or gold finishes available.

Electrical: Fully wired for 120V, 60Hz AC operation, thermally protected, automatic resetting, Class P, sound rated A, high-power factor ballast, unless otherwise specified. Electronic T8 shall be instant start, <20% harmonic distortion standard, specify suffix UNV for <10% harmonic distortion. Specify suffix UNV for universal voltage, 120 through 277V, 50/60Hz AC operation, Electronic T8 only. End of life protection is standard on twin tube fixtures. UL and C-UL listed.

Mounting: Lay-in (T) or Flange (F) troffer. 2 x 2 flanged fixtures require field assembly.

Critical Application: SIMKAR strives to offer the most current product designs and value. Consequently, all SIMKAR products are subject to redesign and revision. Critical applications such as size, operating temperature, or sensor operation should be confirmed with the factory.

FEATURES AND BENEFITS

Versatile and efficient louver and lens options	➤	Ideal when quality and value are desired
Metal light trap standard	➤	Does not deteriorate like some gasketing
Swing action cam latches	➤	Easy access with no tools needed
Built-in T-bar clips	➤	Safely and securely hold fixture to T-bar
Upturned side rails and hemmed end plate	➤	For strength and safer handling
Lamp-pin slots	➤	Ease of lamp installation
Built-in door hinge	➤	Allows door to hinge or latch from either side

ORDERING INFORMATION

Example: TY242232UB11FL4120V

MOUNTING	SPEC DOOR	SIZE	LAMPS	BALLAST	SPECIAL FEATURE	VOLTAGE
T - Lay-In F - Flange XF - Powder coat, flange XT - Powder coat, lay-in	White steel, standard FW - Flat white aluminum RB - Regressed black RW - Regressed white	242 - 2 x 2	132U - (1) 32W U6" T8 217 - (2) 17W 24" T8 232U - (2) 32W U6" T8* 240U - (2) 40W U6" T12 240TT - (2) 40W 22" TT 317 - (3) 17W 24" T8 332U - (3) 32W U 1 5/8" T8 340TT - (3) 34 or 40W 22" TT 417 - (4) 17W 24" T8	B10 - Magnetic TT B11 - Electronic T8 B14 - Electronic TT E1 - Energy Saving Magnetic T12	20G - 20 gauge FL - Flex, see page 37 HR - Heat removal, see page 36 L - Lamps Reflectors, see page 36 B - Black door G - Specular gold louver S - Specular silver louver	120V 277V UNV -120-277V

LOUVER / LENS

B - .125 polycarbonate	N - Injection molded acrylic prismatic	U - .156 prismatic acrylic
C - .200 P15	O - .140 High impact	X - Parahex louver**
E - Shallow parabolic**†	P - Acrylic drop dish	Y - Standard A12 prismatic acrylic
K - .125 prismatic acrylic	Q - .125 RFI #12	Z - Customer specified
L - 1/2" x 1/2" x 3/8" egg crate, white		

* For 1 5/8" please specify

** Specify silver or gold finish under Special Feature

†36 cells (6 rows of 6)

For additional information, see chart on pages 39-41.

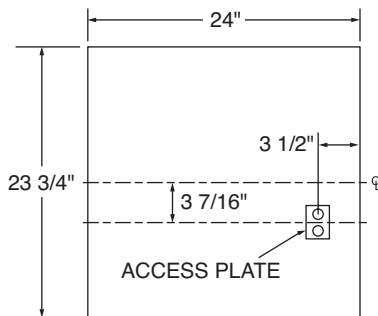
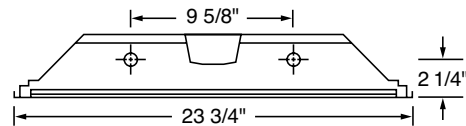
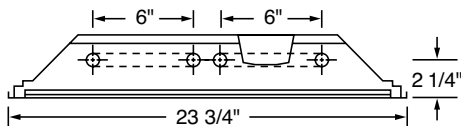
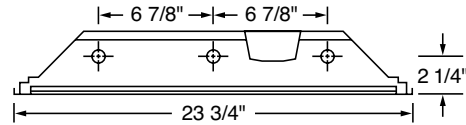
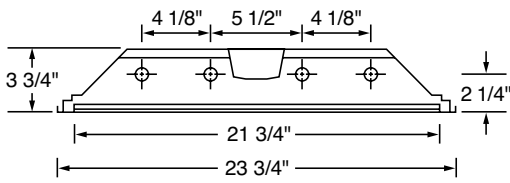
Versatile Troffer and Lens 2' x 2'

PHOTOMETRIC DATA, TY 2-32W U 6" 2 x 2 Model

CANDLEPOWER				LIGHT GUIDE (T8 LAMPS AND ELECTRONIC BALLAST)				COEFFICIENT OF UTILIZATION													
Angle	0	45	90	Area/fixture in sq.ft./lg. room, good conditions - 8' to 10' ceilings				RC	80			70			50						
				Footcandles	2-32W U 6"			RW	70	50	30	70	50	30	50	30	50	30			
					AVERAGE LUMINANCE CD/SQ.M			RCR													
					Angle	0	45	90	Zone	Lumens	%Lamp	%Fixture									
0	1629	1629	1629						0-30	12274	23.2	33.1	1	77	74	72	75	73	70	70	68
5	1623	1621	1625	35	45	3804	4216	4578	0-40	2055	37.4	53.4	2	71	66	62	70	65	61	63	60
15	1557	1575	1593	50	55	2970	3238	3545	0-60	3293	59.9	55.6	3	66	60	55	64	59	54	57	53
25	1416	1464	1510	75	65	2311	1993	2538	0-90	3848	70.0	100.0	4	61	54	48	59	53	48	51	47
35	1180	1249	1331	100	75	2413	1868	2586					5	56	48	42	55	47	42	46	41
45	840	931	1011		85	2719	2425	3086					6	53	43	38	51	43	37	42	37
55	532	580	635										7	48	39	33	47	39	33	38	33
65	305	263	335										8	44	35	30	43	35	29	34	29
75	195	151	209										9	41	32	26	40	31	26	31	26
85	74	66	84										10	38	29	24	37	29	23	28	23
90	10	11	13																		

Lamps = (2) F32T8 @ 2750 lumens ea. Input Watts = 56 LER = 65.6 Test #02879 Ballast = Electronic Ballast Factor = 94.9% S/MH: 0° = 1.2; 90° = 1.3
Comparative yearly lighting energy cost per 1000 lumens = \$3.66 based on 3000 hrs. and \$.08 per KWH

DRAWINGS AND DIMENSIONS

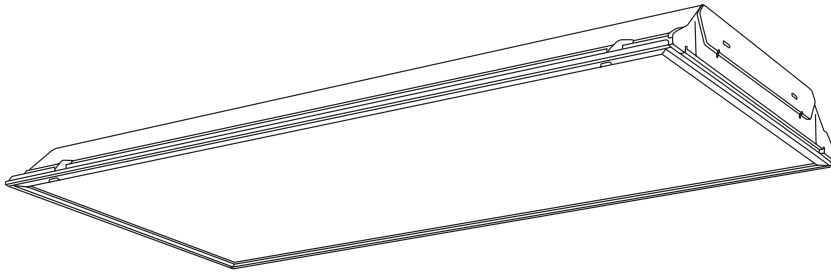


3 Lamp or U Lamp

CATALOG NUMBER	TYPE

Versatile Troffer and Lens TY, TB, TC, TE, TK, TL, TN, TO, TP, TQ, TU, TW, TX, TZ

2' x 4', 4' x 4'



Housing: Die-formed heavy gauge steel with high-gloss baked white enamel finish (minimum reflectance 86%) over rust inhibiting phosphate coat. X prefix specifies durable high gloss powder coat post paint finish (90% reflectance) over rust inhibiting phosphate coat. Flush white steel door frame (TE standard with black) with mitered corners can be hinged from either side. Access plate providing two knockouts and grounding screw.

Shielding: A variety of acrylic lens and louvers available. Specular silver or gold finishes available.

Electrical: Fully wired for 120V, 60Hz AC operation, thermally protected, automatic resetting, Class P, sound rated A, high-power factor ballast, unless otherwise specified. Electronic T8 shall be instant start, <20% harmonic distortion standard, specify suffix UNV for <10% harmonic distortion. Specify suffix UNV for universal voltage, 120 through 277V, 50/60Hz AC operation, Electronic T8 only. UL and C-UL listed.

Mounting: Lay-in (T) or Flange (F) troffer. 2 x 4 flanged fixtures require field assembly.

Critical Application: SIMKAR strives to offer the most current product designs and value. Consequently, all SIMKAR products are subject to redesign and revision. Critical applications such as size, operating temperature, or sensor operation should be confirmed with the factory.

FEATURES AND BENEFITS

Versatile and efficient louver and lens options	➤	Ideal when quality and value are desired
Metal light trap standard	➤	Does not deteriorate like some gasketing
Swing action cam latches	➤	Easy access with no tools needed
Built-in T-bar clips	➤	Safely and securely hold fixture to T-bar
Upturned side rails and hemmed end plate	➤	For strength and safer handling
Lamp-pin slots	➤	Ease of lamp installation
Built-in door hinge	➤	Allows door to hinge or latch from either side

ORDERING INFORMATION

Example: TY244432B11FL4120V

MOUNTING	SPEC DOOR	SIZE	LAMPS	BALLAST	SPECIAL FEATURE	VOLTAGE
T - Lay-In	White steel, standard	244 - 2 x 4	232 - (2) 32W 48" T8	B11 - Electronic T8	20G - 20 gauge	120V
F - Flange	FW - Flat white aluminum	484 - 4 x 4†	240 - (2) 34 or 40W 48" T12	E1 - Energy Saving Magnetic T12	FL - Flex, see page 37	277V
XF - Powder coat, flange	RB - Regressed black		332 - (3) 32W 48" T8		HR - Heat removal, see page 36	UNV -120-277V
XT - Powder coat, lay-in	RW - Regressed white		340 - (3) 34 or 40W 48" T12		L - Lamps	
			432 - (4) 32W 48" T8		Reflectors, see page 36	
			440 - (4) 34 or 40W 48" T12		B - Black door	
			632 - (6) 32W 48" T8		G - Specular gold louver	
			640 - (6) 34 or 40W 48" T12		S - Specular silver louver	
			832 - (6) 32W 48" T8			
			840 - (8) 34 or 40W 48" T12			

LOUVER / LENS

B - .125 polycarbonate	N - Injection molded acrylic prismatic	U - .156 prismatic acrylic
C - .200 P15	O - .140 High impact	X - Parahex louver*
E - Shallow parabolic*†	P - Acrylic drop dish	Y - Standard A12 prismatic acrylic
K - .125 prismatic acrylic	Q - .125 RFI #12	Z - Customer specified
L - 1/2" x 1/2" x 3/8" egg crate, white		

* Specify silver or gold finish under Special Feature

† 78 cells (6 rows of 13)

‡ Available with white steel door frame only and (2) 2 x 4 louvers, except TY which is (1) 4 x 4 lens

For additional information, see chart on pages 39-41.

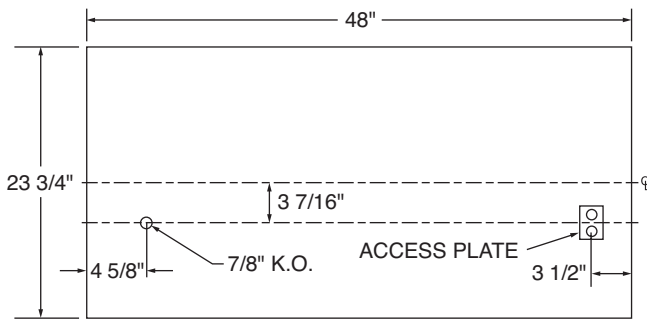
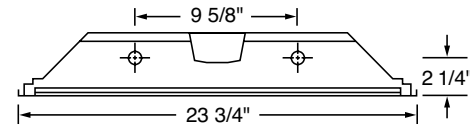
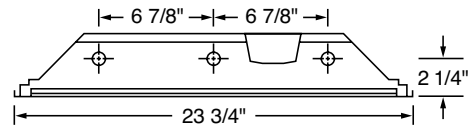
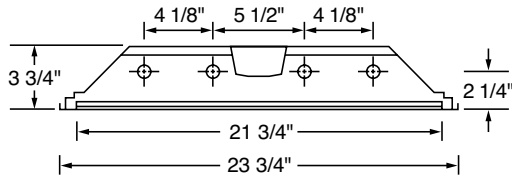
Versatile Troffer and Lens 2' x 4', 4' x 4'

PHOTOMETRIC DATA, TY 4-32W 2 x 4 Model

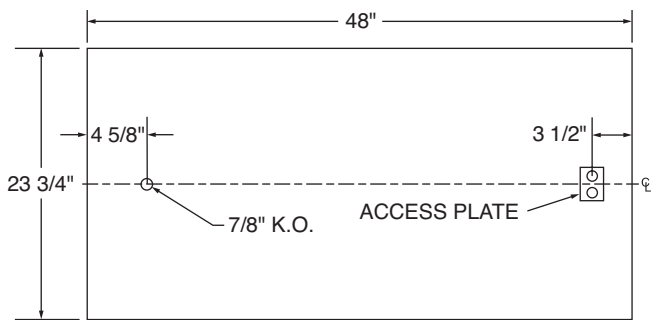
CANDLEPOWER				LIGHT GUIDE (T8 LAMPS AND ELECTRONIC BALLAST)				COEFFICIENT OF UTILIZATION												
Angle	0	45	90	Area/fixture in sq.ft./lg. room, good conditions - 8' to 10' ceilings				RC	80			70			50					
				Footcandles		2-"U" 6"		3-32W	4-32W	RW	70	50	30	70	50	30	50	30		
0	3970	3970	3970	35	86	149	202			RCR	1	91	87	84	89	85	83	82	80	
5	3955	3954	3966	50	60	105	141			2	84	78	73	82	76	72	74	70		
15	3801	3840	3888	75	40	70	94			3	77	70	64	76	69	63	66	62		
25	3463	3573	3675	100	30	52	71			4	71	63	56	70	62	56	60	54		
35	2914	3063	3249	AVERAGE LUMINANCE CD/SQ.M				LIGHT DISTRIBUTION				5	66	56	49	64	55	49	54	48
45	2139	2308	2450	Angle	0	45	90	Zone	Lumens	%Lamp	%Fixture	6	61	51	44	59	50	43	49	43
55	1388	1471	1579	45	4738	5112	5426	0-30	3107	26.8	32.6	7	56	46	39	55	45	39	44	38
65	814	675	863	55	3790	4017	4311	0-40	5024	43.3	52.6	8	52	41	34	51	41	34	49	34
75	512	386	516	65	3017	2501	3198	0-60	8118	70.0	85.1	9	48	37	30	47	37	30	36	30
85	192	176	194	75	3098	2336	3122	0-90	9544	82.3	100.0	10	44	34	27	43	33	27	33	27
90	25	26	33	85	3450	3163	3486													

Lamps = (4) F32 T8 @ 2850 lumens ea. Input Watts = 144.5 LER = 57.1 Test #00793 Ballast = Electronic Ballast Factor = .88 S/MH: 0° = 1.2; 90° = 1.3
Comparative yearly lighting energy cost per 1000 lumens = \$4.20 based on 3000 hrs. and \$.08 per KWH

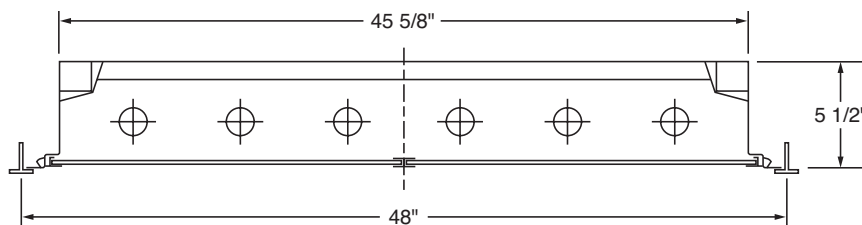
DRAWINGS AND DIMENSIONS



3 Lamp 2 x 4 Model



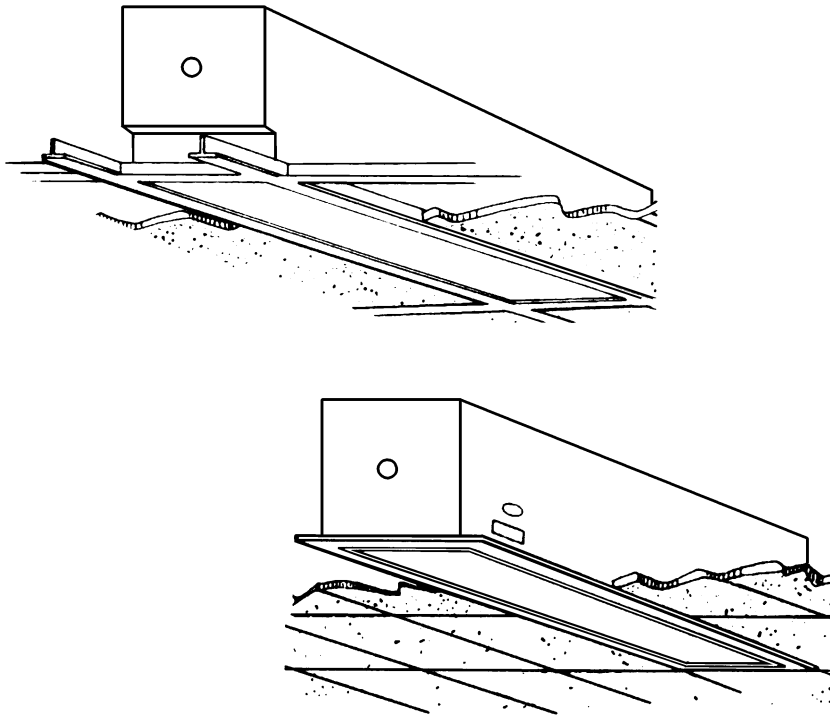
2 or 4 Lamp 2 x 4 Model



4 x 4 Model

Troffer, Recessed 6" x 6" Cube TY66, TE66

CATALOG NUMBER	TYPE



Housing: Die-formed heavy gauge steel with high-gloss baked white enamel finish (minimum reflectance 86%) over rust inhibiting phosphate coat. End knockout for through wire.

Shielding: Pattern A-12 prismatic acrylic lens (TY) or semi-specular shallow parabolic, 12 cells on 2' unit and 24 cells on 4' unit (TE).

Electrical: Fully wired for 120V, 60Hz AC operation, thermally protected, automatic resetting, Class P, sound rated A, high-power factor ballast, unless otherwise specified. Electronic T8 shall be instant start, <20% harmonic distortion standard, specify suffix UNV for <10% harmonic distortion. Specify suffix UNV for universal voltage, 120 through 277V, 50/60Hz AC operation, Electronic T8 only. UL and C-UL listed, damp location.

Mounting: Lay-in (T) for T-bar ceilings or flanged (F) unit. Flanged units require field assembly.

Critical Application: SIMKAR strives to offer the most current product designs and value. Consequently, all SIMKAR products are subject to redesign and revision. Critical applications such as size, operating temperature, or sensor operation should be confirmed with the factory.

FEATURES AND BENEFITS

- Shallow parabolic or prismatic acrylic ➤ Ideal for lobbies and corridors
- One piece housing ➤ No light leaks
- Lift and shift lens ➤ Easy access, no door frame required
- Turn fastener ➤ No tools required to remove wireway cover

ORDERING INFORMATION

Example: TY66232B11120V

66

MOUNTING

T - Lay-in
F - Flange

LENS

E - Shallow parabolic, semi-specular
Y - Acrylic prismatic

SIZE

66 - 6" x 6"

LAMPS

117 - (1) 17W 24" T8
132 - (1) 32W 48" T8
217 - (2) 17W 24" T8
232 - (2) 32W 48" T8

OPTION

ELS - Emergency Lighting System, see page 37

BALLAST

B4 - Magnetic T8
B11 - Electronic T8
DIM - Dimmable

VOLTAGE

120V
277V
UNV - 120-277V

SPECIAL FEATURE

FL - Flex, see page 37

For additional information, see chart on pages 39-41.

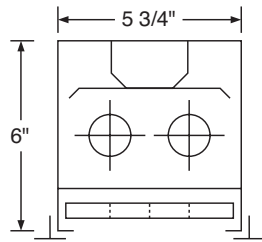
Troffer, Recessed 6" x 6" Cube

PHOTOMETRIC DATA, TY 2-32W 4' Model

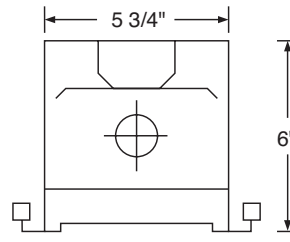
CANDLEPOWER				LIGHT GUIDE (T8 LAMPS AND ELECTRONIC BALLAST)				COEFFICIENT OF UTILIZATION									
Angle	0	45	90	Area/fixture in sq.ft./lg. room, good conditions - 8' to 10' ceilings				RC	80			70			50		
				Footcandles	2-32W			RW	70	50	30	70	50	30	50	30	30
								RCR									
0	1394	1394	1394					1	56	54	52	55	53	51	51	49	
5	1384	1392	1383	35			57	2	52	48	45	51	47	45	46	43	
15	1335	1317	1301	50			40	3	48	44	40	47	43	40	41	39	
25	1217	1193	1164	75			26	4	44	39	35	43	39	35	37	34	
35	1027	973	913	100			20	5	41	35	31	40	35	31	34	30	
45	728	678	602	AVERAGE LUMINANCE				TYPICAL V.C.P.s				LIGHT DISTRIBUTION					
55	455	411	375	CD/SQ.M			Room Size	Mounting Height									
65	247	189	210	Angle	0	45		90	Lengthwise	Crosswise	Zone	Lumens	%Lamp	%Fixture			
75	154	108	123	45	7387	6880	6109	8.5	10	8.5	10	0-30	1051	18.1	36.0		
85	49	32	28	55	5692	5142	4691	43	46	46	49	0-40	1656	28.6	56.7		
90	8	2	2	65	4194	3209	3565	39	42	44	45	0-60	2544	43.9	87.0		
				75	4269	2994	3410	46	50	48	51	0-90	2923	50.4	100.0		
				85	4034	2635	2305	37	38	42	43						
								100x100	38	37	44						

Lamps = (2) F32T8 @ 2900 lumens ea. Input Watts = 56.2 LER = 49 Test # 02122 Ballast = Electronic 120V Ballast Factor = .88 S/MH: 0° = 1.2; 90° = 1.1
 Comparative yearly lighting energy cost per 1000 lumens = \$4.89 based on 3000 hrs. and \$.08 per KWH

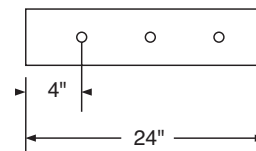
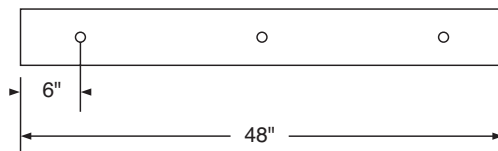
DRAWINGS AND DIMENSIONS



2 Lamp TE



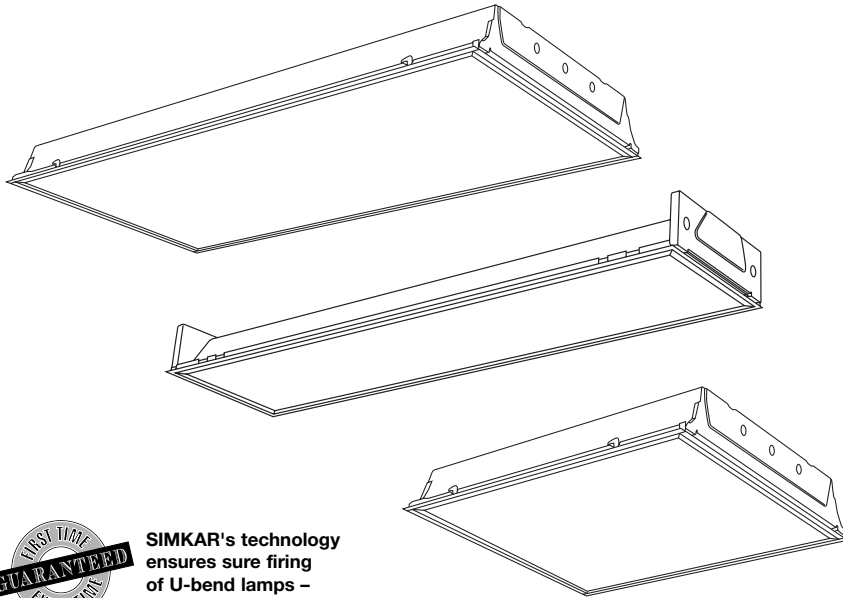
1 Lamp TY



CATALOG NUMBER	TYPE

Specification Grade Deep Recessed Troffer XTKP

1' x 4', 2' x 2', 2' x 4'



SIMKAR's technology ensures sure firing of U-bend lamps – first time, every time

Housing: Durable high gloss powder coat post paint finish (90% reflectance) over rust inhibiting phosphate coat. Flush white steel door frame (consult factory for aluminum door frame) with mitered corners can be hinged from either side. Access plate providing two knockouts and grounding screw.

Shielding: Acrylic prismatic lens with .125" deep cut #12 pattern (other lens available, see ordering information) installed in steel door with overlapping mitered corners, T-type hinges and positive-fit cam latches. Light traps and gasketing installed.

Electrical: Fully wired for 120V, 60Hz AC operation, thermally protected, automatic resetting, Class P, sound rated A, high-power factor ballast, unless otherwise specified. Electronic T8 shall be instant start, <20% harmonic distortion standard, specify suffix UNV for <10% harmonic distortion. Specify suffix UNV for universal voltage, 120 through 277V, 50/60Hz AC operation, Electronic T8 only. End of life protection is standard on twin tube fixtures. UL and C-UL listed.

Mounting: Lay-in troffer for NEMA type G T-bar ceilings. Earthquake clips included.

Critical Application: SIMKAR strives to offer the most current product designs and value. Consequently, all SIMKAR products are subject to redesign and revision. Critical applications such as size, operating temperature, or sensor operation should be confirmed with the factory.

FEATURES AND BENEFITS

- Deep housing with 2-5/16" lamp-to-lens spacing ➤ Balanced light diffusion and reduced lamp image
- Post-painted metal parts, including ballast cover ➤ Durable, uniform finish; controlled reflectivity eliminates hot spots
- Deep cut prismatic lens (K) ➤ Even, bright illumination
- Black light traps on ends and fully gasketed sides ➤ Eliminates light leaks
- 22 gauge steel construction with overlapping mitered corners ➤ Durable construction

ORDERING INFORMATION

Example: XTKP244432B114L120V

XT		P					
MOUNTING	LENS	SIZE	LAMPS	OPTION	BALLAST	SPECIAL FEATURE	VOLTAGE
XT - Lay-in, powder-coat	B - .125 polycarbonate C - .200 prismatic acrylic, P #15 K - .125 prismatic acrylic U - .156 prismatic acrylic Y - A12 prismatic acrylic Z - Customer specified	124 - 1x4 242 - 2x2 244 - 2x4	232 - (2) 32W 48" T8 232U - (2) 32W U6" T8* 240TT - (2) 40W 22" TT 240 - (2) 34 or 40W 48" T12 240U - (2) 40W U6" T12 332 - (3) 32W 48" T8 332U - (3) 32W U 1 5/8" T8 340 - (3) 34 or 40W 48" T12 432 - (4) 32W 48" T8 440 - (4) 34 or 40W 48" T12	ELS - Emergency Lighting System, see page 37	B10 - Magnetic TT B11 - Electronic T8 B14 - Electronic TT E1 - Energy Saving Magnetic T12	FL - Flex, see page 37	120V 277V UNV -120-277V
		DEPTH P - 4 1/2					

* For 1 5/8" please specify
For additional information, see chart on pages 39-41.

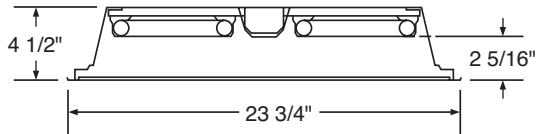
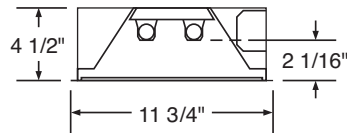
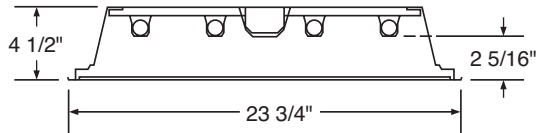
Specification Grade Deep Recessed Troffer 1' x 4', 2' x 2', 2' x 4'

PHOTOMETRIC DATA, XTKP 4-32W 2 x 4 Model

CANDLEPOWER				LIGHT GUIDE (T8 LAMPS AND ELECTRONIC BALLAST)				COEFFICIENT OF UTILIZATION												
Angle	0	45	90	Area/fixture in sq.ft./lg. room, good conditions - 8' to 10' ceilings				RC	80			70			50					
				1 x 4		3-32W		4-32W		RW	70	50	30	70	50	30	50	30		
				Footcandles				RCR												
0	3400	3400	3400	35	80	128	171	1	86	83	80	84	81	79	78	76				
5	3379	3393	3400	50	56	90	120	2	80	74	69	78	73	68	70	66				
15	3272	3338	3388	75	38	60	80	3	74	66	61	72	65	60	63	58				
25	3039	3190	3295	100	28	45	60	4	68	59	53	66	58	53	56	51				
35	2656	2885	2993	AVERAGE LUMINANCE CD/SQ.M				LIGHT DISTRIBUTION				5	62	53	46	62	52	46	50	45
45	2092	2312	2441									Zone	Lumens	%Lamp	%Fixture	6	57	48	41	56
55	1327	1485	1613	Angle	0	90	0-30	2733	24.0	30.6	7	53	43	36	52	42	36	41	35	
65	735	743	789	45	4635	5408	0-40	4517	39.6	50.6	8	49	38	32	48	38	32	37	31	
75	376	335	424	55	3624	4406	0-60	7591	66.6	85.0	9	45	34	28	44	34	28	33	28	
85	141	160	184	65	2725	2925	0-90	8934	78.4	100.0	10	42	31	25	41	31	25	30	25	
90	18	23	30	75	2276	2566														
				85	2534	3307														

Lamps = (4) F32 T8 @ 2850 lumens ea. Input watts: 100.4 LER: 71.8 Test: #04583 Ballast = Electronic 120V Ballast Factor: 80.6% S/MH: 0° = 1.2; 90° = 1.4
Comparative yearly lighting energy cost per 1000 lumens: \$3.34 based on 3000 hours and \$.08 per KWH

DRAWINGS AND DIMENSIONS



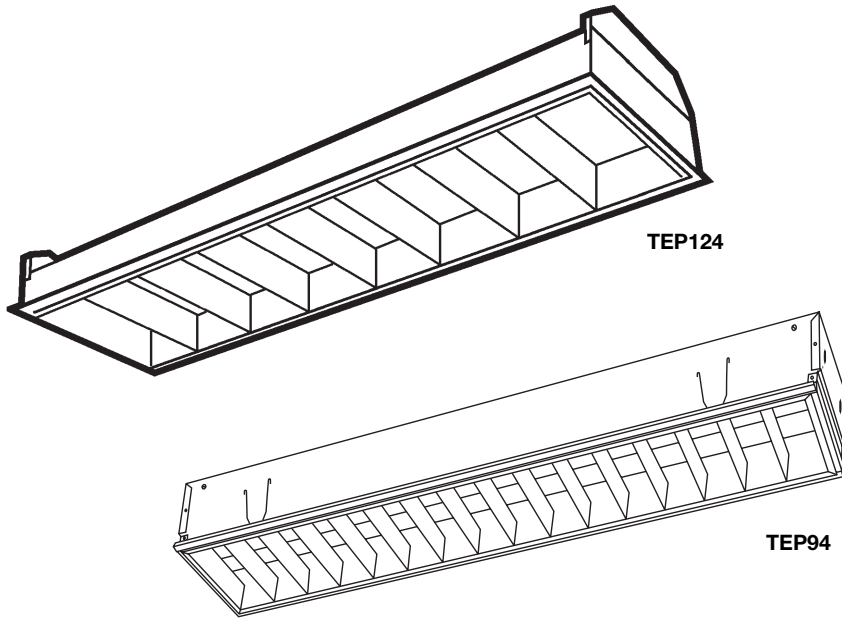
CATALOG NUMBER	TYPE

Deep Parabolic

TEP

1' x 4'

Vertical Precision Parabolic TEP94



FEATURES AND BENEFITS

- | | |
|--|--|
| 3" deep cell parabolic (TEP124) | ➤ High efficiency with uniform low brightness in the 60 degree to 90 degree zone |
| 2" deep louver blade (TEP94) | ➤ Optimal illumination along the vertical plane |
| Protective poly sheet | ➤ Keeps louver clean during shipment and installation |
| Semi-specular aluminum parabolic standard (TEP124) | ➤ Low iridescence |
| "T" hinges (TEP124) and torsion springs (TEP94) | ➤ Allows access from either side |

Housing: Die-formed heavy gauge steel with high-gloss baked white enamel finish (minimum reflectance 86%) over rust inhibiting phosphate coat. Full black reveal with "T" hinges (TEP124) or torsion springs (TEP94) allowing access from either side. Access plate providing two knockouts and ground screw included.

Shielding: Low iridescence, anodized, semi-specular aluminum parabolic, nominal 3" deep-cell louver held securely by steel latches (TEP124). Specular aluminum parabolic 2" deep louver (TEP94).

Electrical: Fully wired for 120V, 60Hz AC operation, thermally protected, automatic resetting, Class P, sound rated A, high-power factor ballast, unless otherwise specified. Electronic T8 shall be instant start, <20% harmonic distortion standard, specify suffix UNV for <10% harmonic distortion. Specify suffix UNV for universal voltage, 120 through 277V, 50/60Hz AC operation, Electronic T8 only. UL and C-UL listed.

Mounting: Optional EC515 Earthquake Clip for lay-in TEP grid ceilings. Specify FEP for flange unit or use GCK kit (TEP94). Flanged units require field assembly. Specify SEP for surface unit (TEP124).

Critical Application: SIMKAR strives to offer the most current product designs and value. Consequently, all SIMKAR products are subject to redesign and revision. Critical applications such as size, operating temperature, or sensor operation should be confirmed with the factory.

ORDERING INFORMATION

Example: TEP1242328CB11120V

EP			C		
MOUNTING	SIZE	LAMPS	SPECIAL FEATURE	BALLAST	VOLTAGE
T - Lay-in F - Flange, see page 37 S - Surface unit, see page 47	124 - 1 x 4 94 - 9" x 48"	132 - (1) 32W 48" T8 140 - (1) 40W 48" T12 232 - (2) 32W 48" T8 240 - (2) 40W 48" T12	G - Gold louver W - White louver S - Specular louver FL - Flex, see page 37 O/U - Over/under stacked lamps (TEP94) SR - Silver reflector, see page 36 Air handling, see page 36	B11 - Electronic T8 E1 - Energy Saving Magnetic T12	120V 277V UNV - 120-277V
	LOUVER	CELL CONFIG			
	EP - 3" deep cell, semi-specular (TEP124) 2" deep louver blade, specular (TEP94)	8 - (1 row of 8) 12 - (2 rows of 6) 16 - (2 rows of 8)		*Available as T8 only	For additional information, see chart on pages 39-41.

Deep Parabolic 1' x 4'

PHOTOMETRIC DATA, 2-32W 1x4 8 Cell Model

CANDLEPOWER				LIGHT GUIDE (T8 LAMPS AND ELECTRONIC BALLAST)				COEFFICIENT OF UTILIZATION															
Angle	0	45	90	Area/fixture in sq.ft./lg. room, good conditions - 8' to 10' ceilings				RC	80		50		10		RC	80		50		10			
				Footcandles	2-32W			RW	70	50	30	50	30	10	50	30	10	RWR	70	50	30	50	30
0	1569	1569	1569					1	68	88	64	62	60	59	57	56							
5	1555	1575	1598	35	77			2	63	59	56	56	54	52	53	51							
15	1477	1595	1674	50	54			3	59	54	50	51	48	45	48	46							
25	1347	1508	1459	75	36			4	54	48	44	46	43	40	44	41							
35	1164	1172	1007	100	27			5	50	43	39	41	38	35	39	36							
45	913	792	876	AVERAGE LUMINANCE CD/SQ.M				TYPICAL V.C.P.s				LIGHT DISTRIBUTION											
55	552	641	984	Angle	0	45	90	Room Size	Mounting Height			Zone	Lumens	%Lamp	%Fixture								
65	101	235	256	45	5011	4347	4808	20x20	8.5	10	8.5	10	0-30	1266	21.8	36.0							
75	17	26	21	55	3735	4337	6658	30x20	79	72	72	62	0-40	1981	34.2	56.4							
85	1	4	5	65	927	2158	2351	30x30	84	77	79	71	0-60	3275	56.5	93.2							
90	0	0	0	75	255	390	315	30x60	86	81	82	75	0-90	3515	60.6	100.0							
				85	45	178	223	60x30	87	81	82	76											
								60x60	89	84	84	79											

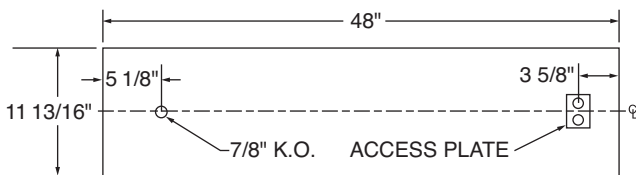
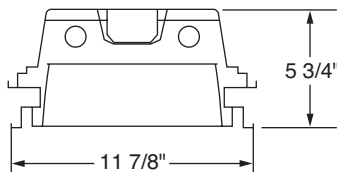
Lamps = (2) F32 T8 @ 2850 lumens ea. Input Watts = 60 LER = 56.89 Test #00906 Ballast = Electronic Ballast Factor = .8 S/MH: 0° = 1.2; 90° = 1.2
Comparative yearly lighting energy cost per 1000 lumens = \$4.22 based on 3000 hrs. and \$.08 per KWH

PHOTOMETRIC DATA, 2-32W 9" x 4' Over/Under Model

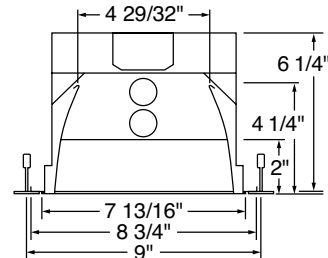
CANDLEPOWER				LIGHT GUIDE (T8 LAMPS AND ELECTRONIC BALLAST)				COEFFICIENT OF UTILIZATION																
Angle	0	45	90	Area/fixture in sq.ft./lg. room, good conditions - 8' to 10' ceilings				RC	80		70		50		RC	80		70		50				
				Footcandles	2-31U 6"	2-32 1 x 4	3-32W	4-32W	RW	70	50	30	70	50	30	50	30	RWR	70	50	30	70	50	30
0	1096	1096	1096						1	75	73	71	74	71	69	68	67							
5	1088	1109	1122	35	77	77	141	165	2	70	65	62	68	64	61	62	59							
15	1039	1155	1241	50	54	54	99	115	3	65	59	54	63	58	53	56	52							
25	960	1225	1498	75	36	36	66	77	4	59	52	47	58	51	47	50	46							
35	841	1422	1928	100	27	27	49	58	5	54	46	41	53	46	41	44	40							
45	690	1488	1472	AVERAGE LUMINANCE CD/SQ.M				TYPICAL V.C.P.s				LIGHT DISTRIBUTION												
55	501	958	1274	Angle	0	45	90	Room Size	Mounting Height			Zone	Lumens	%Lamp	%Fixture									
65	36	272	135	45	4884	10533	10419	30x30	8.5	10	8.5	10	0-30	1006	17.3	25.7								
75	5	6	5	55	4372	8360	11117	40x40	79	72	67	65	0-40	1883	32.5	48.0								
85	1	1	0	65	426	3221	1599	60x30	79	73	68	65	0-60	3696	63.7	94.2								
90	0	0	0	75	97	116	97	60x60	80	71	68	73	0-90	3922	67.6	100.0								
				85	57	57	0	100x100	78	71	68	63												

Lamps = (2) F32 T8 @ 2900 lumens ea. Input Watts = 54.3 LER = 63.5 Test #02344 Ballast = Electronic Ballast Factor = .88 S/MH: 0° = 1.2; 90° = 2.0
Comparative yearly lighting energy cost per 1000 lumens = \$ 3.78 based on 3000 hrs. and \$.08 per KWH

DRAWINGS AND DIMENSIONS



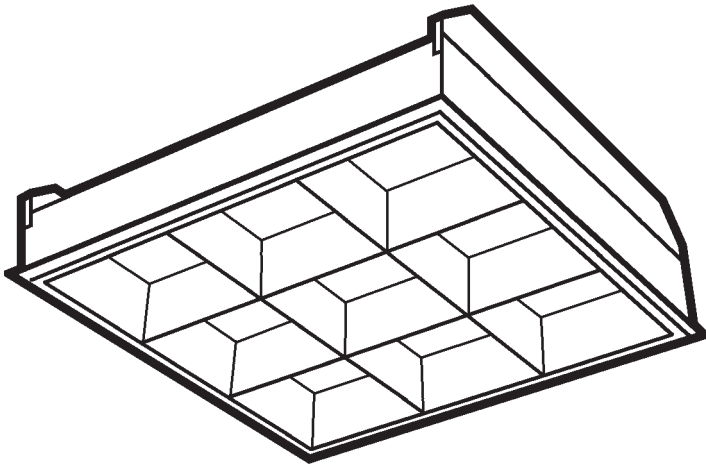
TEP124



TEP94

CATALOG NUMBER	TYPE

Deep Parabolic TEP 2' x 2'



SIMKAR's technology ensures sure firing of U-bend lamps - first time, every time

Housing: Die-formed heavy gauge steel with high-gloss baked white enamel finish (minimum reflectance 86%) over rust inhibiting phosphate coat. X prefix specifies durable high gloss powder coat post paint finish (90% reflectance) over rust inhibiting phosphate coat. Full black reveal with "T" hinges allowing access from either side. Access plate providing two knockouts and ground screw included.

Shielding: Low iridescence, anodized, semi-specular aluminum parabolic, nominal 3" deep-cell louver held securely by steel latches.

Electrical: Fully wired for 120V, 60Hz AC operation, thermally protected, automatic resetting, Class P, sound rated A, high-power factor ballast, unless otherwise specified. Electronic T8 shall be instant start, <20% harmonic distortion standard, specify suffix UNV for <10% harmonic distortion. Specify suffix UNV for universal voltage, 120 through 277V, 50/60Hz AC operation, Electronic T8 only. End of life protection is standard on twin tube fixtures. UL and C-UL listed.

Mounting: Optional EC515 Earthquake Clip for lay-in TEP grid ceilings. Specify FEP for flange unit or use GCK kit. Flanged units require field assembly. Specify SEP for surface unit.

Critical Application: SIMKAR strives to offer the most current product designs and value. Consequently, all SIMKAR products are subject to redesign and revision. Critical applications such as size, operating temperature, or sensor operation should be confirmed with the factory.

FEATURES AND BENEFITS

- 3" deep cell parabolic ➤ High efficiency with uniform low brightness in the 60 degree to 90 degree zone
- Protective poly sheet ➤ Keeps louver clean during shipment and installation
- Semi-specular aluminum parabolic standard ➤ Low iridescence
- "T" hinges ➤ Allows access from either side

ORDERING INFORMATION

Example: TEP2422409CE1120V

EP 242

C

MOUNTING

T - Lay-in
F - Flange
XF - Powder coat, flange[†]
XT - Powder coat, lay-in[†]
S - Surface unit, see page 47

SIZE

242 - 2 x 2

LOUVER

EP - 3" deep cell, semi-specular

LAMPS

217 - (2) 17W 24" T8
220 - (2) 20W 24" T12
232U - (2) 32W U6" T8*
240U - (2) 40W U6" T12
240TT - (2) 40W 22" TT
317 - (3) 17W 24" T8
332U - (3) 32W U 1 5/8" T8
340TT - (3) 40W 22" TT
417 - (4) 17W 24" T8
420 - (4) 20W 24" T12

CELL CONFIG

9 - (3 rows of 3)
16 - (4 rows of 4)

Consult factory for other configurations

SPECIAL FEATURE

G - Gold louver
W - White louver
S - Specular louver
FL - Flex, see page 37
SR - Silver reflector, see page 36
Air handling, see page 36

BALLAST

B10 - Magnetic TT 120V
B11 - Electronic T8 277V
B14 - Electronic TT UNV - 120-277V
E1 - Energy Saving Magnetic T12

VOLTAGE

*For 1 5/8" please specify
[†]Minimums may apply, consult factory

For additional information, see chart on pages 39-41.

Deep Parabolic 2' x 2'

PHOTOMETRIC DATA, 2-40W U 6" 9 Cell Model

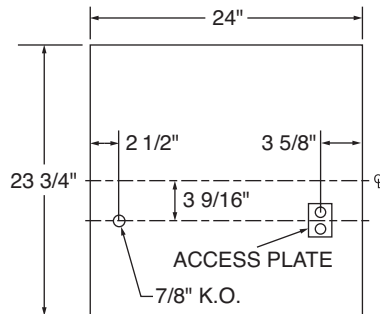
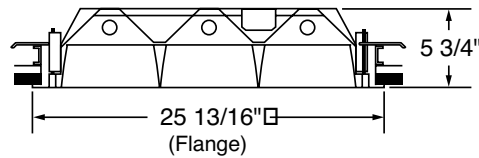
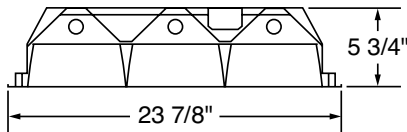
CANDLEPOWER				LIGHT GUIDE (T12 LAMPS AND MAGNETIC BALLAST)				COEFFICIENT OF UTILIZATION								
Angle	0	45	90	Area/fixture in sq.ft./lg. room, good conditions - 8' to 10' ceilings				RC	80			50			10	
				Footcandles	2-40W U 6"			RW	70	50	30	50	30	10	50	30
0	1555	1555	1555					RCR								
5	1544	1556	1567	35	77			1	64	62	60	58	57	56	54	53
15	1474	1571	1646	50	54			2	59	56	53	53	51	49	50	48
25	1341	1524	1615	75	36			3	55	51	47	48	46	43	46	44
35	1161	1351	1383	100	27			4	51	46	42	44	41	38	42	39
45	928	1009	900					5	47	41	37	40	36	33	38	35
55	585	530	556					6	44	38	33	36	32	30	34	31
65	100	139	141					7	41	34	29	33	29	26	31	28
75	15	15	17					8	37	30	26	29	26	23	28	25
85	2	2	2					9	34	27	23	26	23	20	25	22
90	1	0	0					10	32	25	21	24	20	18	23	20

AVERAGE LUMINANCE CD/SQ.M				TYPICAL V.C.P.s				
Angle	0	45	90	Room Size	Mounting Height			
					Lengthwise	Crosswise		
45	4724	5137	4582	20x20	8.5	10	8.5	10
55	3671	3326	3489	30x20	82	76	82	76
65	852	1184	1201	30x30	86	80	85	80
75	209	209	236	30x60	88	82	87	82
85	83	83	83	60x30	90	85	89	85
				60x60	89	85	87	84
				60x60	90	88	89	87

LIGHT DISTRIBUTION			
Zone	Lumens	%Lamp	%Fixture
0-30	1285	20.7	36.5
0-40	2109	34.0	59.9
0-60	3350	54.0	95.2
0-90	3519	56.8	100.0

Lamps = (2) 40W U 6" T12 @ 3100 lumens ea. Input Watts = 90 LER = 36.9 Test #00913 Ballast = Magnetic Ballast Factor = .9 S/MH: 0° = 1.2; 90° = 1.4
 Comparative yearly lighting energy cost per 1000 lumens = \$6.50 based on 3000 hrs. and \$.08 per KWH

DRAWINGS AND DIMENSIONS



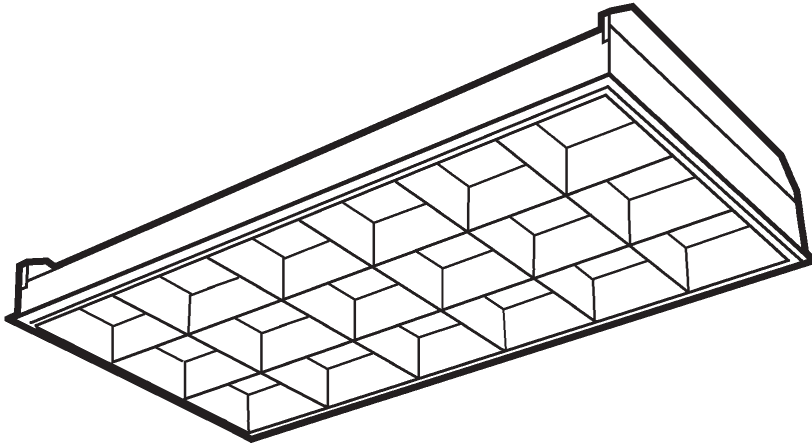
3 Lamp or U Lamp

Deep Parabolic

TEP

2' x 4'

CATALOG NUMBER	TYPE



Housing: Die-formed heavy gauge steel with high-gloss baked white enamel finish (minimum reflectance 86%) over rust inhibiting phosphate coat. X prefix specifies durable high gloss powder coat post paint finish (90% reflectance) over rust inhibiting phosphate coat. Full black reveal with "T" hinges allowing access from either side. Access plate providing two knockouts and ground screw included.

Shielding: Low iridescence, anodized, semi-specular aluminum parabolic, nominal 3" deep-cell louver held securely by steel latches.

Electrical: Fully wired for 120V, 60Hz AC operation, thermally protected, automatic resetting, Class P, sound rated A, high-power factor ballast, unless otherwise specified. Electronic T8 shall be instant start, <20% harmonic distortion standard, specify suffix UNV for <10% harmonic distortion. Specify suffix UNV for universal voltage, 120 through 277V, 50/60Hz AC operation, Electronic T8 only. UL and C-UL listed.

Mounting: Optional EC515 Earthquake Clip for lay-in TEP grid ceilings. Specify FEP for flange unit or use GCK kit. Flanged units require field assembly. Specify SEP for surface unit.

Critical Application: SIMKAR strives to offer the most current product designs and value. Consequently, all SIMKAR products are subject to redesign and revision. Critical applications such as size, operating temperature, or sensor operation should be confirmed with the factory.

FEATURES AND BENEFITS

- 3" deep cell parabolic ➤ High efficiency with uniform low brightness in the 60 degree to 90 degree zone
- Protective poly sheet ➤ Keeps louver clean during shipment and installation
- Semi-specular aluminum parabolic standard ➤ Low iridescence
- "T" hinges ➤ Allows access from either side

ORDERING INFORMATION

Example: TEP24433218CB11120V

EP 244

C

MOUNTING

T - Lay-in
 F - Flange
 XF - Powder coat, flange†
 XT - Powder coat, lay-in†
 S - Surface unit, see page 47

SIZE

244 - 2 x 4

LAMPS

232 - (2) 32W 48" T8
 240 - (2) 34 or 40W 48" T12
 332 - (3) 32W 48" T8
 340 - (3) 34 or 40W 48" T12
 432 - (4) 32W 48" T8
 440 - (4) 34 or 40W 48" T12

LOUVER

EP - 3" deep cell, semi-specular

SPECIAL FEATURE

G - Gold louver
 W - White louver
 S - Specular louver
 FL - Flex, see page 37
 SR - Silver reflector, see page 36
 Air handling, see page 36

BALLAST

B11 - Electronic T8
 E1 - Energy Saving Magnetic T12

VOLTAGE

120V
 277V
 UNV - 120-277V

CELL CONFIG

12 - (2 rows of 6) 24 - (4 rows of 6)
 18 - (3 rows of 6) 27 - (3 rows of 9)
 24 - (3 rows of 8) 32 - (4 rows of 8)

†Minimums may apply, consult factory

For additional information, see chart on pages 39-41

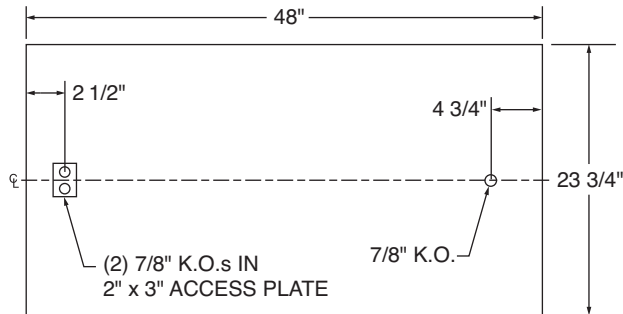
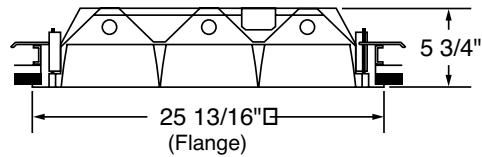
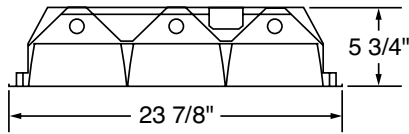
Deep Parabolic 2' x 4'

PHOTOMETRIC DATA, 3-32W 2 x 4 18 Cell Model

CANDLEPOWER				LIGHT GUIDE (T8 LAMPS AND ELECTRONIC BALLAST)					COEFFICIENT OF UTILIZATION									
Angle	0	45	90	Area/fixture in sq.ft./lg. room, good conditions - 8' to 10' ceilings					RC	80			70			50		
				Footcandles	2-31U 6"	2-32 1 x 4	3-32W	4-32W	RW	70	50	30	70	50	30	50	30	30
0	2880	2880	2880						RCR	1	84	81	78	82	79	77	76	74
5	2869	2885	2901	35	77	77	141	165	2	77	73	69	76	71	67	69	66	
15	2742	2866	2953	50	54	54	99	115	3	72	65	60	70	64	59	62	58	
25	2523	2751	2939	75	36	36	66	77	4	66	59	53	65	58	53	56	52	
35	2228	2545	2927	100	27	27	49	58	5	62	53	47	60	52	48	51	46	
45	1822	2106	1305	AVERAGE LUMINANCE CD/SQ.M				TYPICAL V.C.P.s				LIGHT DISTRIBUTION						
55	1296	820	526	Angle	0	45	90	Room Size	Mounting Height			Zone	Lumens	%Lamp	%Fixture			
65	480	247	165						Lengthwise	Crosswise	0-30	2352	27.0	36.1				
75	47	41	32	45	4289	4957	3072	30x30	8.5	10	8.5	10	0-40	3953	45.4	60.7		
85	8	8	7	55	3761	2380	1526	40x40	84	79	91	87	0-60	6147	70.7	94.5		
90	0	2	2	65	1890	973	650	60x30	86	83	92	89	0-90	6508	74.8	100.0		
				75	302	264	206	60x60	86	82	92	89						
				85	153	153	134	100x100	88	85	92	90						

Lamps = (3) F32 T8 @ 2850 lumens ea. Input Watts = 90.4 LER = 62.3 Test #00910 Ballast = Electronic Ballast Factor = .88 S/MH: 0° = 1.2; 90° = 1.5
Comparative yearly lighting energy cost per 1000 lumens = \$3.85 based on 3000 hrs. and \$.08 per KWH

DRAWINGS AND DIMENSIONS

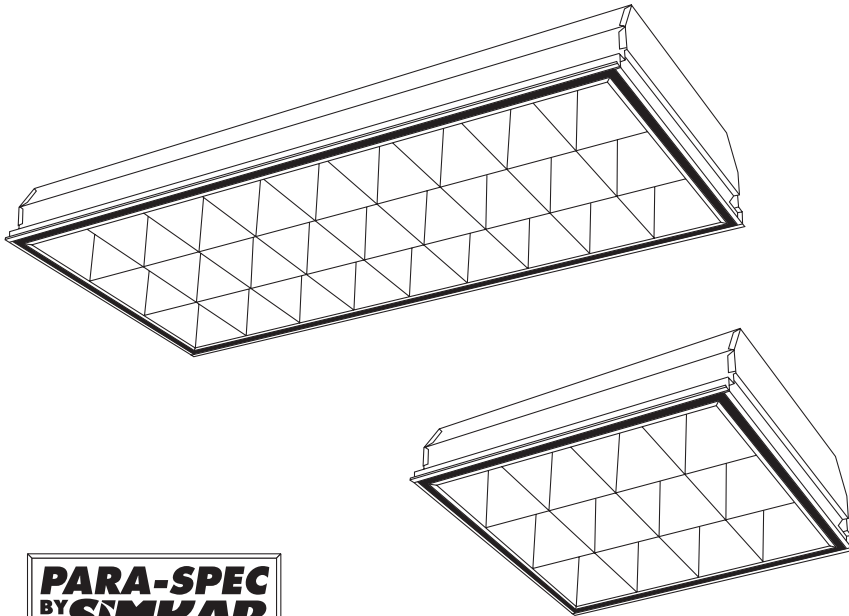


2 Lamp or 4 Lamp Models

CATALOG NUMBER	TYPE

Precision Parabolic TE2P

2' x 2', 2' x 4'



Housing: Die-formed heavy gauge steel with high-gloss baked white enamel finish (minimum reflectance 86%) over rust inhibiting phosphate coat. Full black reveal with "T" hinges allowing access from either side. Access plate providing two knockouts and ground screw included.

Shielding: Precision engineered, low iridescent, anodized specular aluminum parabolic 4.25" deep cell louver.

Electrical: Fully wired for 120V, 60Hz AC operation, thermally protected, automatic resetting, Class P, sound rated A, high-power factor ballast, unless otherwise specified. Electronic T8 shall be instant start, <20% harmonic distortion standard, specify suffix UNV for <10% harmonic distortion. Specify suffix UNV for universal voltage, 120 through 277V, 50/60Hz AC operation, Electronic T8 only. End of life protection is standard on twin tube fixtures. UL and C-UL listed.

Mounting: Optional EC515 Earthquake clip for extra security for TE2P in T-Bar ceilings. Flanged units use trim kits that require field assembly.

Critical Application: SIMKAR strives to offer the most current product designs and value. Consequently, all SIMKAR products are subject to redesign and revision. Critical applications such as size, operating temperature, or sensor operation should be confirmed with the factory.

FEATURES AND BENEFITS

- 4 1/4" deep cut off parabolic ➤ High efficiency with uniform low brightness in the 60 degree to 90 degree zone
- Meets RP1 ➤ Ideal for lighting applications where visual display terminals (VDTs) are used
- Protective poly sheet ➤ Keeps louver clean during shipment and installation

ORDERING INFORMATION

Example: TE2P24433227CB11120V

E2P

C

MOUNTING

T - Lay-in
F - Flange

SIZE

242 - 2 x 2
244 - 2 x 4

LAMPS

317 - (3) 17W 24" T8
332 - (3) 32W 48" T8
340TT- (3) 40W 22" TT

SPECIAL FEATURE

FL - Flex, see page 37
SR - Silver reflector, see page 36

BALLAST

B11 - Electronic T8
B14 - Electronic TT
B10 - Magnetic TT

VOLTAGE

120V
277V
UNV - 120-277V

LOUVER

E2P - Deep specular precision cut off

CELL CONFIG

12 - 2 x 2 (3 rows of 4)
27 - 2 x 4 (3 rows of 9)

For additional information, see chart on pages 39-41.

Precision Parabolic 2' x 2', 2' x 4'

PHOTOMETRIC DATA, 3-32W 2 x 4 27 Cell Model

CANDLEPOWER				LIGHT GUIDE (T8 LAMPS AND ELECTRONIC BALLAST)				COEFFICIENT OF UTILIZATION											
Angle	0	45	90	Area/fixture in sq.ft./lg. room, good conditions - 8' to 10' ceilings						RC	80		70		50				
				3-TT40W		3-17W		3-32W		RW	70	50	30	70	50	30	50	30	
0	2424	2424	2424	Footcandles						RCR	68	66	64	67	65	63	62	61	
5	2415	2427	2443	35	132	54	115			1	64	60	57	62	59	56	57	55	
15	2302	2577	2814	50	93	37	80			3	60	55	51	58	54	51	52	49	
25	2101	2747	3090	75	62	25	54			4	56	50	46	54	49	45	48	45	
35	1794	2634	3283	100	46	18.7	40			5	52	46	41	51	45	41	44	40	
45	1197	1965	1250	AVERAGE LUMINANCE CD/SQ.M				TYPICAL V.C.P.s				LIGHT DISTRIBUTION							
55	172	260	94	Angle	0	45	90	Room Size	Mounting Height			Zone	Lumens	%Lamp	%Fixture				
65	12	16	13	45	2769	4545	2891		8.5	10	8.5	10	0-30	2196	25.2	41.7			
75	3	3	4	55	490	741	268	30x30	95	95	98	95	0-40	3801	43.7	72.2			
85	1	1	1	65	46	62	50	40x40	95	95	98	96	0-60	5246	60.3	99.6			
90	0	0	0	75	19	19	25	60x30	95	95	98	96	0-90	5267	60.5	100.0			
				85	19	19	19	60x60	95	95	98	96							
								100x100	96	95	98	96							

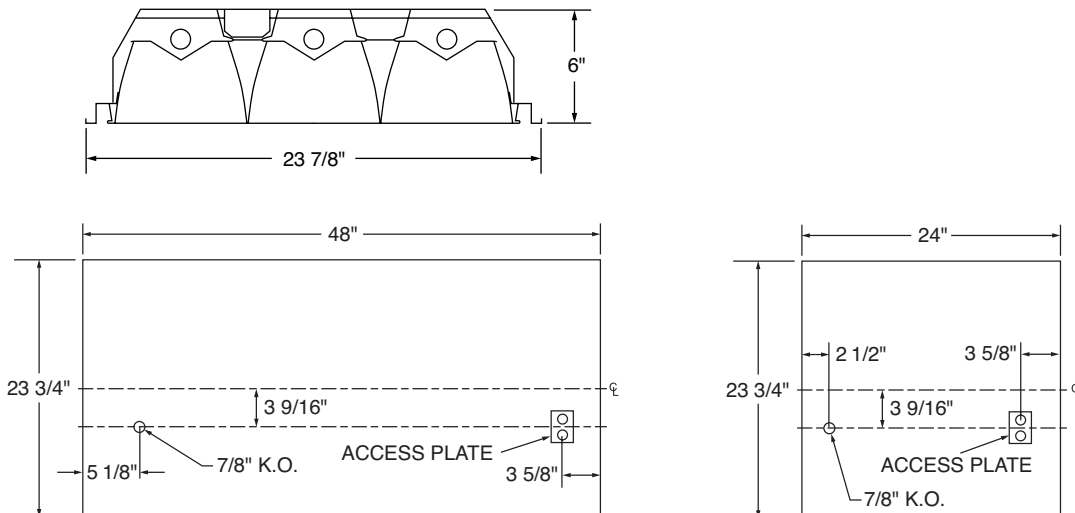
Lamps = (3) F32 T8 @ 2850 lumens ea. Input Watts = 87.9 LER = 51.8 Test #01423 Ballast = Electronic Ballast Factor = .88 S/MH: 0° = 1.2; 90° = 1.7
Comparative yearly lighting energy cost per 1000 lumens = \$4.63 based on 3000 hrs. and \$.08 per KWH

PHOTOMETRIC DATA, 3-17W 2 x 2 12 Cell Model

CANDLEPOWER				LIGHT GUIDE (T8 LAMPS AND ELECTRONIC BALLAST)				COEFFICIENT OF UTILIZATION											
Angle	0	45	90	Area/fixture in sq.ft./lg. room, good conditions - 8' to 10' ceilings						RC	80		50		10				
				3-TT40W		3-17W		3-32W		RW	70	50	30	50	30	10	50	30	
0	1262	1262	1262	Footcandles						RCR	68	66	64	67	65	63	62	61	
5	1260	1285	1309	35	132	54	115			1	64	60	58	63	59	57	57	55	
15	1204	1357	1429	50	93	37	80			3	60	55	52	59	54	51	53	50	
25	1102	1354	1483	75	62	25	54			4	56	51	47	55	50	46	48	45	
35	933	1280	1245	100	46	18.7	40			5	52	46	42	51	46	42	45	41	
45	617	764	393	AVERAGE LUMINANCE CD/SQ.M				TYPICAL V.C.P.s				LIGHT DISTRIBUTION							
55	120	125	32	Angle	0	45	90	Room Size	Mounting Height			Zone	Lumens	%Lamp	%Fixture				
65	5	4	4	45	3067	3797	1953		8.5	10	8.5	10	0-30	1118	27.6	45.8			
75	2	2	2	55	735	766	196	20x20	92	93	98	98	0-40	1846	45.6	75.6			
85	0	1	1	65	42	33	33	30x20	92	93	98	98	0-60	2435	60.1	99.7			
90	0	0	0	75	27	27	27	30x30	92	93	98	98	0-90	2443	60.3	100.0			
				85	0	40	40	30x60	93	94	99	98							
								60x30	93	94	99	98							
								60x60	93	94	99	98							

Lamps = (3) F17 T8 @ 1350 lumens ea. Input Watts = 48 LER = 50.9 Test #01825 Ballast = Electronic Ballast Factor = 1.0 S/MH: 0° = 1.2; 90° = 1.4
Comparative yearly lighting energy cost per 1000 lumens = \$4.72 based on 3000 hrs. and \$.08 per KWH

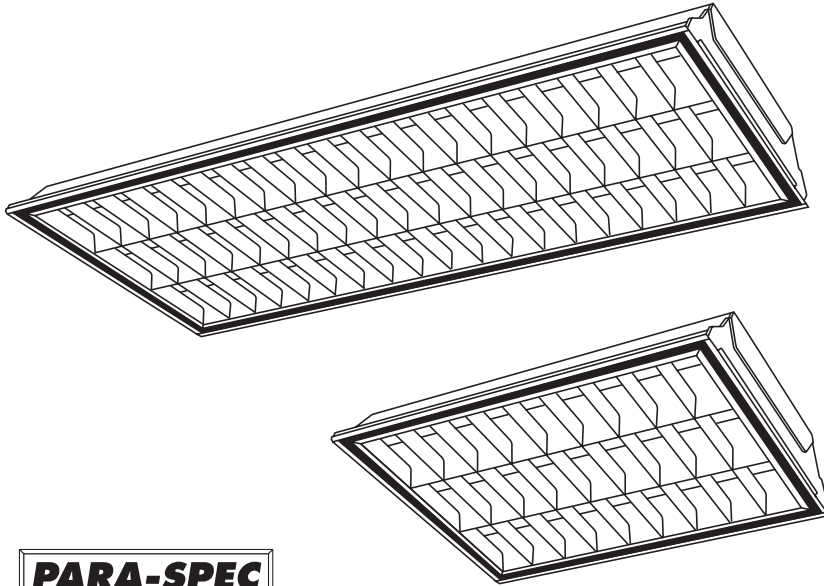
DRAWINGS AND DIMENSIONS



CATALOG NUMBER	TYPE

Low Brightness Parabolic TE3P

2' x 2', 2' x 4'



Housing: Die-formed heavy gauge steel with high-gloss baked white enamel finish (minimum reflectance 86%) over rust inhibiting phosphate coat. X prefix specifies durable high gloss powder coat post paint finish (90% reflectance) over rust inhibiting phosphate coat. Flush black steel door frame with mitered corners that can be hinged from either side. Access plate providing two knockouts and ground screw included.

Shielding: Excellent VCP; meets IES RP-1 for visual display terminal (VDT) areas. Low iridescence, anodized semi-specular or optional specular aluminum parabolic louver. Swing-action cam latches provide positive fit. Light traps standard. High-reflectance white reflector standard.

Electrical: Fully wired for 120V, 60Hz AC operation, thermally protected, automatic resetting, Class P, sound rated A, high-power factor ballast, unless otherwise specified. Electronic T8 shall be instant start, <20% harmonic distortion standard, specify suffix UNV for <10% harmonic distortion. Specify suffix UNV for universal voltage, 120 through 277V, 50/60Hz AC operation, Electronic T8 only. UL and C-UL listed.

Mounting: Lay-in (T) or Flange (F) troffer. 2 x 2 and 2 x 4 flanged fixtures require field assembly.

Critical Application: SIMKAR strives to offer the most current product designs and value. Consequently, all SIMKAR products are subject to redesign and revision. Critical applications such as size, operating temperature, or sensor operation should be confirmed with the factory.

FEATURES AND BENEFITS

- Shallow plenum parabolic ➤ Provides exceptional visual comfort
- Meets RP1 ➤ Ideal for lighting applications where visual display terminals (VDTs) are used
- Swing action cam latch ➤ Allows door to hinge from either side for easy relamping
- 3-3/4" fixture height ➤ Ideal for installation in NEMA type "F" or "G" ceilings
- Metal light trap standard ➤ Does not deteriorate like some gasketing

ORDERING INFORMATION

Example: TE3P24433257CB11120V

E3P

C

B11

MOUNTING

T - Lay-in
F - Flange
XF - Powder coat, flange
XT - Powder coat, lay-in

SPEC DOOR

Black steel, standard
WF - Flat steel, white

SIZE

242 - 2 x 2
244 - 2 x 4

LAMPS

317 - (3) 17W 24" T8
332 - (3) 32W 48" T8

SPECIAL FEATURE

AR - Specular aluminum reflector
FL - Flex, see page 37
S - Specular silver louver

BALLAST

B11 - Electronic T8

VOLTAGE

120V
277V
UNV - 120-277V

LOUVER

E3P - Precision aluminum cell

CELL CONFIG

27 - 2 x 2 (3 rows of 9)
57 - 2 x 4 (3 rows of 19)

For additional information, see chart on pages 39-41.

Low Brightness Parabolic 2' x 2', 2' x 4'

PHOTOMETRIC DATA, 3-32W 2 x 4 Model, Specular

CANDLEPOWER				LIGHT GUIDE (T8 LAMPS AND ELECTRONIC BALLAST)				COEFFICIENT OF UTILIZATION									
Angle	0	45	90	Footcandles		Area/fixture in sq.ft./lg. room, good conditions - 8' to 10' ceilings		RC	80	70	50	30	70	50	30	50	30
						3-17W T8	3-32W	RW	70	50	30	70	50	30	50	30	RCR
0	3808	3808	3808					1	79	77	75	77	75	73	72	71	
5	3908	3887	3860	35		57	123	2	74	70	67	72	69	66	67	64	
15	3694	3425	3325	50		40	86	3	69	64	60	68	63	59	61	58	
25	3302	2843	2487	75		27	58	4	65	59	54	63	58	53	56	52	
35	2788	1998	1759	100		20	43	5	60	53	48	59	53	48	51	47	
45	2112	1315	1253					6	56	49	44	55	48	44	47	43	
55	1094	821	680					7	52	45	40	51	44	39	43	39	
65	45	124	35					8	49	41	35	48	40	35	39	35	
75	2	2	3					9	45	37	32	44	36	31	36	31	
85	1	1	0					10	42	34	29	41	33	29	33	28	
90	0	0	0														
AVERAGE LUMINANCE CD/SQ.M				TYPICAL V.C.P.s				LIGHT DISTRIBUTION									
Angle	0	45	90	Room Size	Mounting Height		Zone	Lumens	%Lamp	%Fixture							
					Lengthwise	Crosswise	0-30	2653	31.0	44.4							
45	5049	3144	2995	30x30	8.5	10	8.5	10	0-40	3991	46.7	66.6					
55	3224	2420	2004	40x40	92	86	93	88	0-60	5854	68.5	97.9					
65	180	496	140	60x30	92	87	93	88	0-90	5982	70.0	100.0					
75	13	13	20	60x60	93	87	93	88									
85	19	19	0	100x100	93	87	94	88									

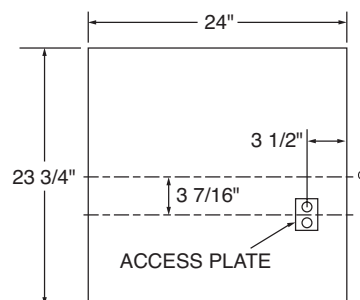
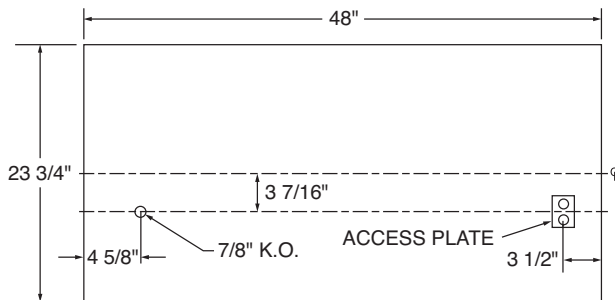
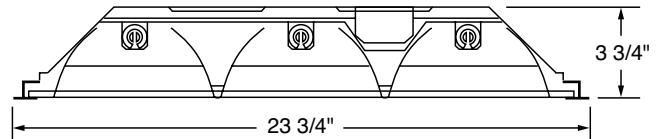
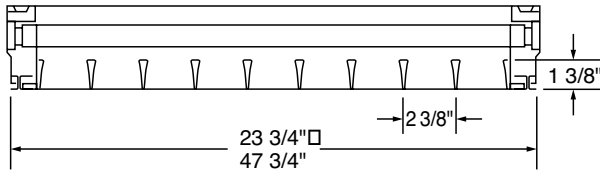
Lamps = (3) F32 T8 @ 2850 lumens ea Input Watts = 84.1 LER = 63.1 Test #03020 Ballast = Electronic 120V Ballast Factor = .887 S/MH = 1.2
Comparative yearly lighting energy cost per 1000 lumens = \$3.80 based on 3000 hrs. and \$.08 per KWH

PHOTOMETRIC DATA, 3-32W 2 x 4 Model, Semi-specular

CANDLEPOWER				LIGHT GUIDE (T8 LAMPS AND ELECTRONIC BALLAST)				COEFFICIENT OF UTILIZATION									
Angle	0	45	90	Footcandles		Area/fixture in sq.ft./lg. room, good conditions - 8' to 10' ceilings		RC	80	70	50	30	70	50	30	50	30
						3-17W T8	3-32W	RW	70	50	30	70	50	30	50	30	RCR
0	3726	3726	3726					1	74	72	70	73	71	69	66	67	
5	3698	3695	3696	35		57	123	2	70	66	63	68	65	62	63	60	
15	3442	3373	3170	50		40	86	3	66	60	57	64	60	56	58	55	
25	3043	2579	2355	75		27	58	4	61	55	51	60	54	50	53	49	
35	2507	1885	1789	100		20	43	5	57	50	45	56	49	45	48	44	
45	1832	1328	1314					6	53	46	41	52	45	41	44	40	
55	966	796	670					7	49	42	37	46	41	37	40	36	
65	142	156	46					8	46	38	33	45	38	33	37	33	
75	20	13	7					9	42	34	30	42	34	29	33	29	
85	2	3	2					10	40	32	27	39	31	27	31	26	
90	0	0	1														
AVERAGE LUMINANCE CD/SQ.M				TYPICAL V.C.P.s				LIGHT DISTRIBUTION									
Angle	0	45	90	Room Size	Mounting Height		Zone	Lumens	%Lamp	%Fixture							
					Lengthwise	Crosswise	0-30	2551	26.9	43.6							
45	4407	3194	3161	30x30	92	89	93	91	0-40	3779	43.4	65.6					
55	2864	2366	1967	40x40	92	90	93	91	0-60	5583	64.2	96.9					
65	571	636	185	60x30	92	89	93	91	0-90	5762	66.2	100.0					
75	131	85	46	60x60	92	90	93	91									
85	39	59	39	100x100	92	90	93	91									

Lamps = (3) F32 T8 @ 2850 lumens ea. Input Watts = 84.8 LER = 61 Test #02910 Ballast = Electronic 120V Ballast Factor = .914 S/MH = 1.1
Comparative yearly lighting energy cost per 1000 lumens = \$3.93 based on 3000 hrs. and \$.08 per KWH

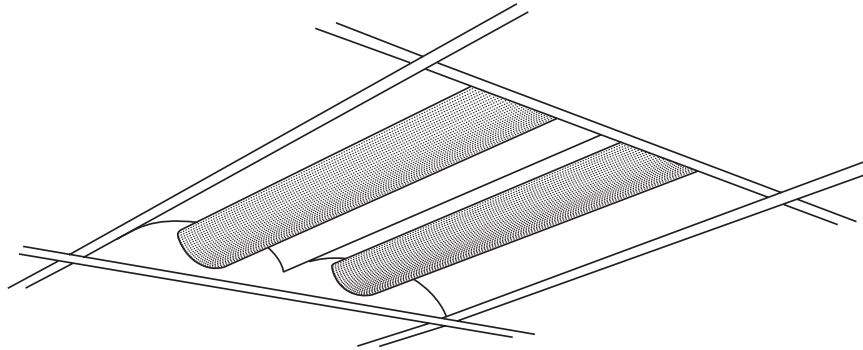
DRAWINGS AND DIMENSIONS



CATALOG NUMBER	TYPE

Anjelus Direct/Indirect TDPW

2' x 2', 2' x 4'



Housing: Die-formed heavy gauge steel with high-gloss baked white enamel finish (minimum reflectance 86%) over rust inhibiting phosphate coat. Access plate providing two knockouts and ground screw included.

Shielding: Micro-perforated screens with opaline acrylic inlay; staggered hole pattern. Post-painted white powder coat finish.

Reflector: Post-painted matte white powder coat finish.

Electrical: Fully wired for 120V, 60Hz AC operation, thermally protected, automatic resetting, Class P, sound rated A, high-power factor ballast, unless otherwise specified. Electronic T8 shall be instant start, <20% harmonic distortion standard, specify suffix UNV for <10% harmonic distortion. Specify suffix UNV for universal voltage, 120 through 277V, 50/60Hz AC operation, Electronic T8 only. End of life protection is standard on twin tube fixtures. UL and C-UL listed.

Mounting: Lay-in (T). Conversion kit is available for NEMA type F ceilings, see page 35.

Critical Application: SIMKAR strives to offer the most current product designs and value. Consequently, all SIMKAR products are subject to redesign and revision. Critical applications such as size, operating temperature, or sensor operation should be confirmed with the factory.

FEATURES AND BENEFITS

- Micro perforated screens with opaline acrylic inlay ➤ Reduces glare for improved visual comfort
- Post-painted metal parts ➤ Durable, uniform finish; controlled reflectivity eliminates hot spots
- 3 3/4" depth ➤ Fits shallow plenums
- Snap fit lamp shields ➤ Easy relamping and fixture maintenance without tools

ORDERING INFORMATION

Example: TDPW242240TTB14120V

T	DP	W	SIZE	LAMPS	OPTION	BALLAST	VOLTAGE
MOUNTING	TYPE	COLOR					
T - Lay-in, grid ceiling	DP - Direct/indirect lighting with perforated shield	W - White inlay	242 - 2x2 244 - 2x4	214 - (2) 14W 22" T5 217 - (2) 17W 24" T8 232 - (2) 32W 48" T8 240TT - (2) 40W 22" TT 250TT - (2) 50W 22" TT 228 - (2) 28W 46" T5 414 - (4) 14W 22" T5 440TT - (4) 40W 22" TT 450TT - (4) 50W 22" TT 428 - (4) 28W 46" T5	ELS - Emergency Lighting System, see page 37	B14 - Electronic TT B10 - Magnetic TT B12 - Electronic T5 B11 - Electronic T8	120V 277V UNV - 120-277V

For additional information, see chart on pages 39-41.

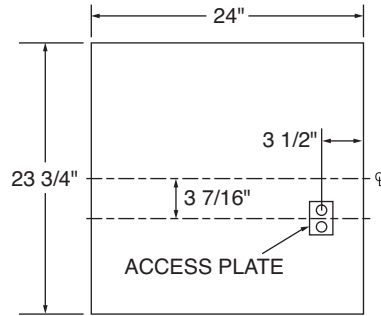
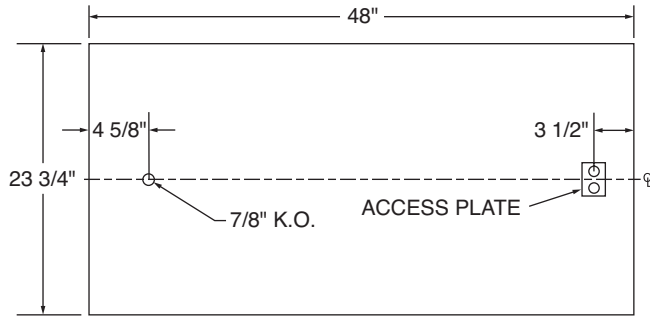
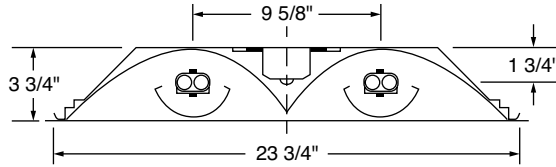
Anjelus Direct/Indirect 2' x 2', 2' x 4'

PHOTOMETRIC DATA, 2-40W TT 2 x 2 Model

CANDLEPOWER				LIGHT GUIDE (TT LAMPS AND ELECTRONIC BALLAST)					COEFFICIENT OF UTILIZATION									
Angle	0	45	90	Area/fixture in sq.ft./lg. room, good conditions - 8' to 10' ceilings					RC	80			70			50		
				Footcandles	2-40W TT 2x2	4-40W TT 2x4	2-28W T5 2x4	4-28W T5 2x4	RW	70	50	30	70	50	30	50	30	RCR
0	1425	1425	1425						1	75	72	69	73	70	68	67	65	
5	1415	1420	1424						2	68	63	59	67	62	58	59	56	
15	1366	1385	1399	35	91	166	89	162	3	63	56	51	61	55	50	53	49	
25	1267	1305	1337	50	64	116	63	114	4	57	50	44	56	49	43	47	42	
35	1127	1192	1250	75	42	78	42	76	5	52	44	38	51	43	37	41	36	
45	951	1044	1126	100	32	58	31	57	6	48	39	33	47	38	33	37	32	
55	737	851	897	AVERAGE LUMINANCE CD/SQ.M				TYPICAL V.C.P.s				LIGHT DISTRIBUTION						
65	493	577	539	Angle	0	90	Room Size	Mounting Height		Zone	Lumens	%Lamp	%Fixture					
75	229	248	252					Lengthwise	Crosswise	0-30	1129	17.9	26.3					
85	43	57	71	45	3984	4717	30x30	8.5	10	8.5	10	0-40	1876	29.8	43.7			
90	2	3	3	55	3806	4632	40x40	47	48	45	47	0-60	3425	54.4	79.7			
				65	3455	3778	60x30	47	47	44	45	0-90	4296	68.2	100.0			
				75	7621	2884	60x60	50	51	50	51							
				85	1461	2413	100x100	47	47	43	44							

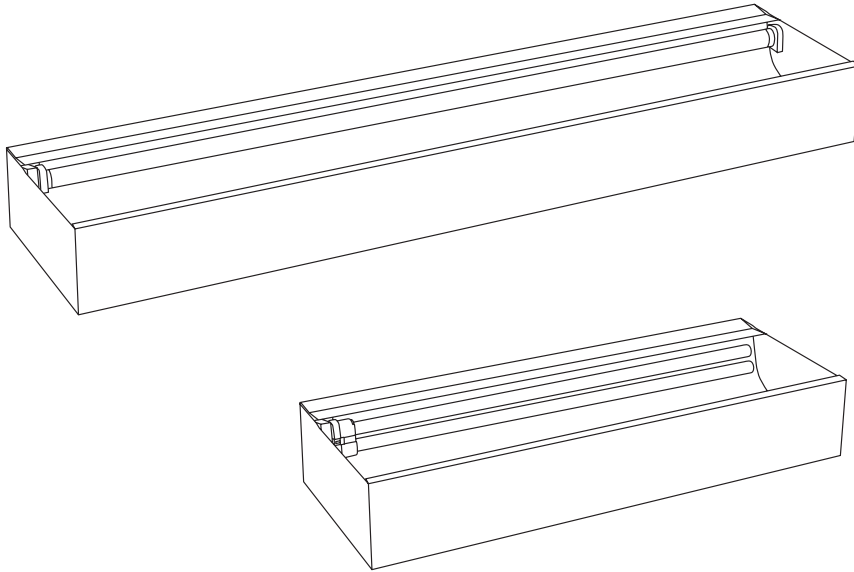
Lamps = (2) F40 TT @ 3150 lumens ea. Input Watts = 66.4 LER = 66.4 Test #03768 Ballast = Electronic 120V Ballast Factor = 99.3% S/MH: 0° = 1.3; 90° = 1.4
Comparative yearly lighting energy cost per 1000 lumens = \$3.74 based on 3000 hrs. and \$.08 per KWH

DRAWINGS AND DIMENSIONS



CATALOG NUMBER	TYPE

Cove Elite Twin Tube Indirect COV 2', 4'



Housing: Die-formed heavy gauge steel with high-gloss baked white enamel finish (minimum reflectance 86%) over rust inhibiting phosphate coat. Ample knockouts for wire through.

Reflector: Specular anodized forward-throw reflector for even illumination without hot spots or striations. Fully assembled and ready to mount.

Electrical: Fully wired for 120V, 60Hz AC operation, thermally protected, automatic resetting, Class P, sound rated A, high-power factor ballast, unless otherwise specified. Electronic T8 shall be instant start, <20% harmonic distortion standard, specify suffix UNV for <10% harmonic distortion. Specify suffix UNV for universal voltage, 120 through 277V, 50/60Hz AC operation, Electronic T8 only. End of life protection is standard on twin tube fixtures. UL and C-UL listed.

Mounting: Surface mount or drop into cove approximately 18" from ceiling. Stop fixture 6" short of end wall to avoid excessive corner brightness. Light distribution becomes more uniform as distance from ceiling increases. Minimum spacing from ceiling is 18". For uniform light fixtures along one wall, room width should not exceed 108", or both walls, 216" max. room width.

Critical Application: SIMKAR strives to offer the most current product designs and value. Consequently, all SIMKAR products are subject to redesign and revision. Critical applications such as size, operating temperature, or sensor operation should be confirmed with the factory.

FEATURES AND BENEFITS

- | | | |
|---|---|---|
| Specular anodized forward throw reflector | ➤ | Even illumination without hot spots or striations |
| Indirect illumination | ➤ | Non-glaring ambient light |
| Surface or Cove mount | ➤ | Ideal for indirect illumination or wall wash applications |
| Fully assembled | ➤ | Simple installation |

ORDERING INFORMATION

Example: COV240TTB14120V

COV

MOUNTING

COV - Surface wall mount or lay into cove

LAMPS

117 - (1) 17W 24" T8
132 - (1) 32W 48" T8
140TT - (1) 40W 22" TT
240TT - (2) 40W 22" TT

BALLAST

B10 - Magnetic TT
B11 - Electronic T8
B14 - Electronic TT

VOLTAGE

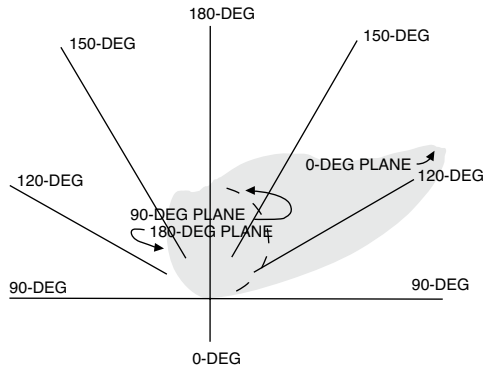
120V
277V
UNV - 120-277V

For additional information, see chart on pages 39-41.

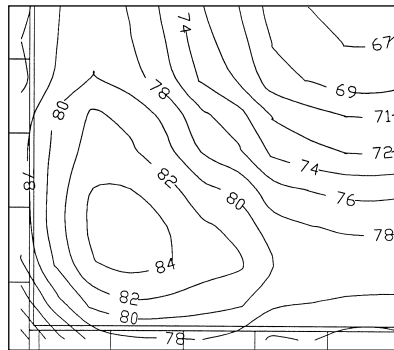
Cove Elite Twin Tube Indirect 2', 4'

PHOTOMETRIC DATA, 1-40W TT 2' Model

CANDLEPOWER				COEFFICIENT OF UTILIZATION																																	
Angle	0	45	90	RC	80			70			50																										
				RW	70	50	30	70	50	30	70	50	30																								
90	0	1	0	RCR	1	61	58	56	52	50	48	34	33																								
95	18	104	27	2	55	51	47	47	43	40	30	28																									
105	479	575	110	3	50	44	40	43	38	34	26	24																									
115	1002	780	210	4	46	39	34	39	34	29	23	21																									
125	1140	662	293	5	42	35	29	36	30	25	21	18																									
135	829	651	360	6	39	31	26	33	27	22	18	16																									
145	751	635	412	7	36	28	23	30	24	20	16	14																									
155	685	594	450	8	33	25	20	28	21	17	15	12																									
165	607	547	476	9	30	22	18	26	19	15	13	11																									
175	525	503	485	10	28	20	16	24	18	14	12	10																									
180	488	488	488	<table border="1"> <thead> <tr> <th colspan="4">LIGHT DISTRIBUTION</th> </tr> <tr> <th>Zone</th> <th>Lumens</th> <th>%Lamp</th> <th>%Fixture</th> </tr> </thead> <tbody> <tr> <td>0-30</td> <td>2352</td> <td>27.0</td> <td>36.1</td> </tr> <tr> <td>0-40</td> <td>3953</td> <td>45.4</td> <td>60.7</td> </tr> <tr> <td>0-60</td> <td>6147</td> <td>70.7</td> <td>94.5</td> </tr> <tr> <td>0-90</td> <td>6508</td> <td>74.8</td> <td>100.0</td> </tr> </tbody> </table>										LIGHT DISTRIBUTION				Zone	Lumens	%Lamp	%Fixture	0-30	2352	27.0	36.1	0-40	3953	45.4	60.7	0-60	6147	70.7	94.5	0-90	6508	74.8	100.0
LIGHT DISTRIBUTION																																					
Zone	Lumens	%Lamp	%Fixture																																		
0-30	2352	27.0	36.1																																		
0-40	3953	45.4	60.7																																		
0-60	6147	70.7	94.5																																		
0-90	6508	74.8	100.0																																		

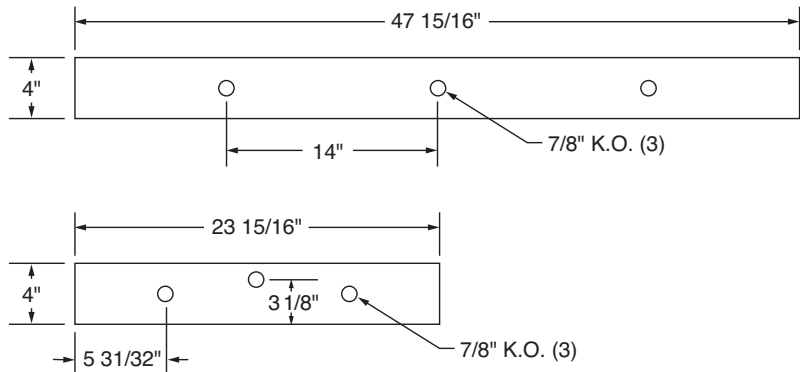
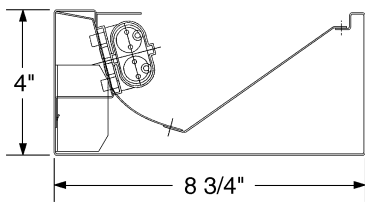


Calculate average illuminance in foot candles using zonal cavity method, de-rate by 10% for perimeter layout. Consult factory for 50W Twin Tube model information.
 Lamps: (1) 40W TT @ 3150 lumens ea. Input Watts: 45.8 LER = 48.4 Test #01424 Ballast: Magnetic Ballast Factor = 1.0
 Comparative yearly lighting energy cost per 1000 lumens = \$4.96 based on 3000 hrs. and \$.08 per KWH



F.C. on workplane 30" high
 Room 20' x 20' x 9', cove mounted at 7'

DRAWINGS AND DIMENSIONS

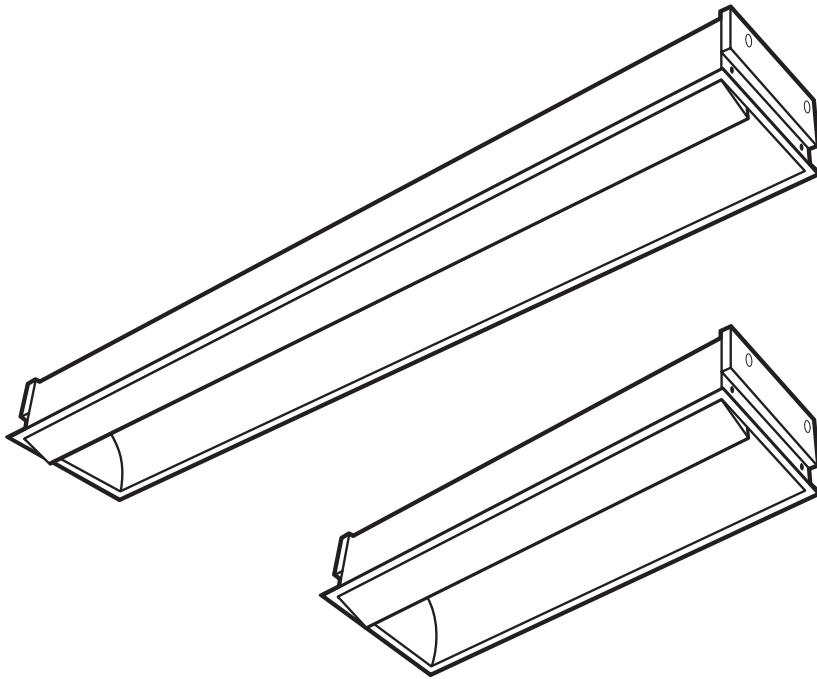


CATALOG NUMBER	TYPE

Lay-in Wall Washer

TWW

2', 4'



Housing: Die-formed heavy gauge steel with high-gloss baked white enamel finish (minimum reflectance 86%) over rust inhibiting phosphate coat. Access plate providing two knockouts and ground screw included.

Reflector: Downward throw asymmetric reflector with semi-specular finish offers high optical performance, producing even light to vertical surface.

Electrical: Fully wired for 120V, 60Hz AC operation, thermally protected, automatic resetting, Class P, sound rated A, high-power factor ballast, unless otherwise specified. Electronic T8 shall be instant start, <20% harmonic distortion standard. End of life protection is standard on twin tube fixtures. UL and C-UL listed.

Mounting: 36" from wall. Lay-in (T) includes integral hang tabs. Offset ends for continuous row mounting. Optional conversion kit available for sheetrock or plaster ceilings (TWWFK82 or 84), assembly required.

Critical Application: SIMKAR strives to offer the most current product designs and value. Consequently, all SIMKAR products are subject to redesign and revision. Critical applications such as size, operating temperature, or sensor operation should be confirmed with the factory.

FEATURES AND BENEFITS

- Semi-specular downward throw reflector ➤ Even light to the vertical surface
- Recessed housing ➤ Discreet source for non-glaring ambient light
- Individual or continuous row mounting ➤ Uniform look for a corridor or lobby

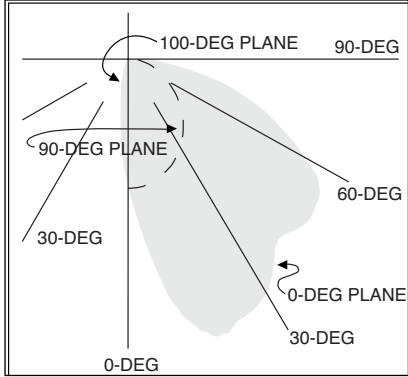
ORDERING INFORMATION

Example: TWW84240TTB14120V

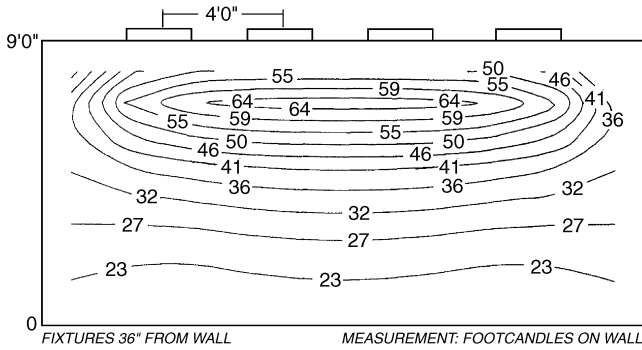
WW					
MOUNTING	SIZE	LAMPS	BALLAST	SPECIAL FEATURE	VOLTAGE
T - Lay-In F - Flange, see page 35	82 - 8" x 2' 84 - 8" x 4'	140TT - One 40W 22" twin tube (2' model) 240TT - Two 40W 22" twin tube (4' model) 250TT - Two 50W 22" twin tube (4' model)	B10 - Magnetic TT B14 - Electronic TT	FL - Flex, see page 37	120V 277V
APPLICATION WW - Wall washer, semi-specular		For additional information, see chart on pages 39-41.			

Lay-in Wall Washer 2', 4'

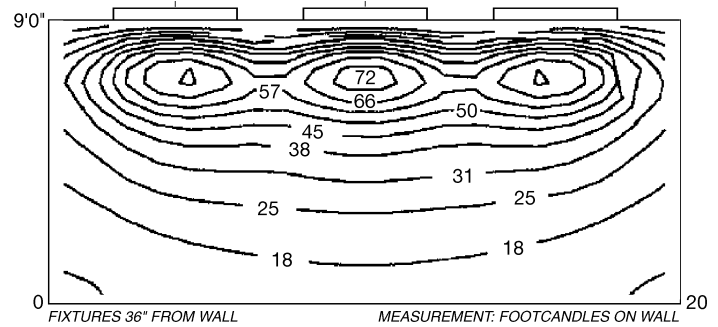
PHOTOMETRIC DATA, 1-40W TT 2' Model

CANDLEPOWER					AVERAGE LUMINANCE CD/SQ.M			
Angle	0	45	90		Angle	0	45	90
0	514	514	514		45	20055	16921	6417
5	711	668	510		55	23654	18693	5718
15	1132	1005	485		65	23882	21012	4961
25	1125	1081	437		75	23143	19325	4571
35	994	971	375		85	18384	12886	3952
45	947	799	303		LIGHT DISTRIBUTION			
55	906	716	219		Zone	Lumens	%Lamp	%Fixture
65	674	593	140		0-30	462	14.7	24.6
75	400	334	79		0-40	764	24.3	40.6
85	107	75	23		0-60	1403	44.5	74.6
90	34	15	3	0-90	1881	59.7	100.0	

Lamps = (1) 40W-TT @ 3150 lumens ea. Input Watts = 68.2 LER = 27.6 Test # 01823 Ballast Factor = 1.0
 Comparative yearly lighting energy cost per 1000 lumens = \$8.69 based on 3000 hrs. and \$.08 per KWH

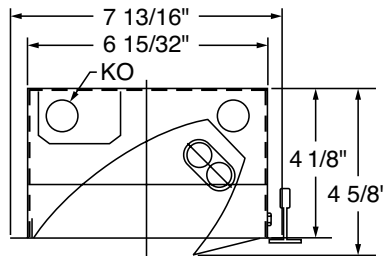


2' Model



4' Model

DRAWINGS AND DIMENSIONS

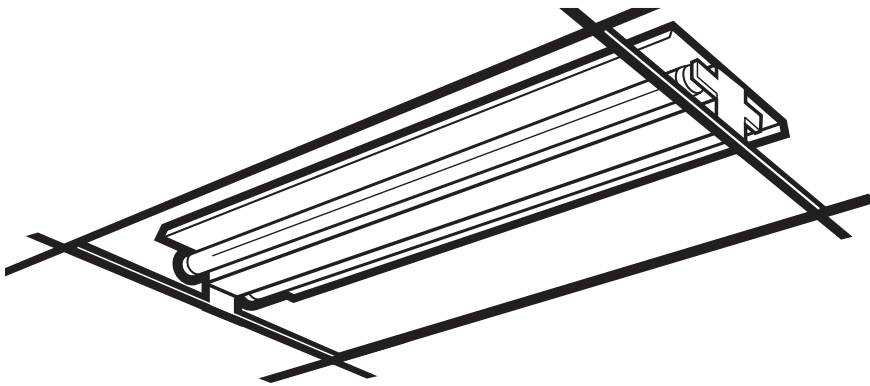


CATALOG NUMBER	TYPE

Recessed Fluorescent Grid Lights

GL

2', 4'



Housing: Die-formed heavy gauge steel with high-gloss baked white enamel finish (minimum reflectance 86%) over rust inhibiting phosphate coat.

Shielding: For use with any luminous panel sized for ceiling, supplied by others.

Electrical: Fully wired for 120V, 60Hz AC operation, thermally protected, automatic resetting, Class P, sound rated A, high-power factor ballast, unless otherwise specified.

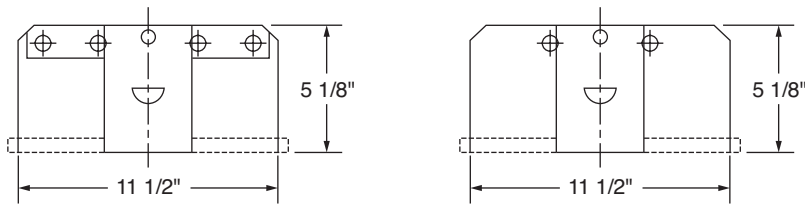
Mounting: Units require 5 1/2" clearance. Units attach to T-Grid with clips provided.

Critical Application: SIMKAR strives to offer the most current product designs and value. Consequently, all SIMKAR products are subject to redesign and revision. Critical applications such as size, operating temperature, or sensor operation should be confirmed with the factory.

FEATURES AND BENEFITS

- | | | |
|---------------------------------|---|------------------------------------|
| T-bar clips provided | ➤ | Easy to install |
| Top embossments | ➤ | For strength and durability |
| Superb lamp spacing | ➤ | Even illumination |
| For use with any luminous panel | ➤ | Ideal for residential applications |

DRAWINGS AND DIMENSIONS



ORDERING INFORMATION

Example: GL220ESB120V

GL

SERIES	LAMPS	BALLAST	VOLTAGE
GL - Grid Light	220 - (2) 20W 24" T12 240 - (2) 40W 48" T12 420 - (4) 20W 24" T12 440 - (4) 40W 48" T12	E1 - Energy Saving Magnetic T12 ESB - Residential Magnetic T12 RES - Magnetic T12 LPF	120V 277V

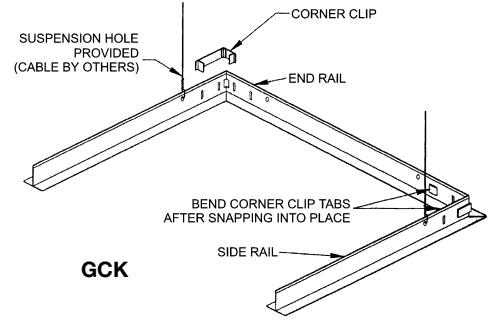
For additional information, see chart on pages 39-41.

Grid Conversion Kits

An alternative to flanged fixtures. Complete individual ceiling-mount kits set up for independent suspension. Allows installation of regular lay-in fixtures in sheetrock or plaster ceilings without the use of flange, level lugs or plaster frames PFI.

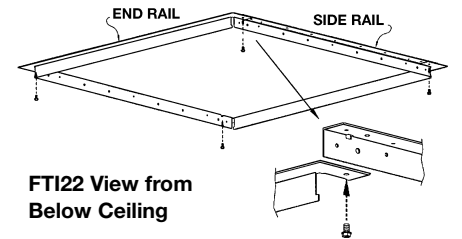
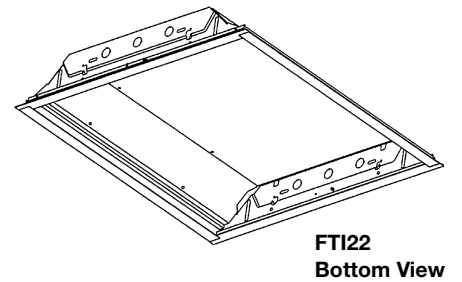
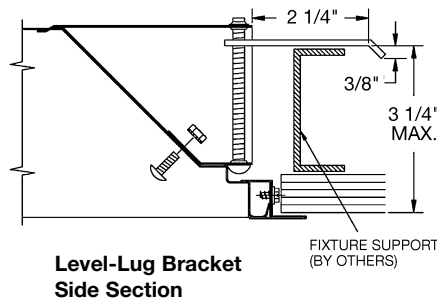
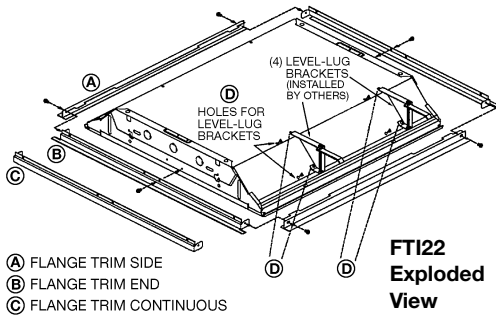
White extruded aluminum with mitered corners. Easy installation. Bulk packed as required. Not for continuous rows. Check available plenum swing clearance on deep fixtures.

CATALOG #	SIZE	FRAME OUT	CODE #
For Parabolics, TDPW, and XTKP			
GCK 12	1' X 2'	12.5" X 24.5"	55-01013
GCK 14	1' x 4'	12.5" x 48.5"	55-01011
GCK 22	2' x 2'	24.5" X 24.5"	55-01010
GCK 24	2' X 4'	24.5" X 48.5"	55-01012
For Troffers and TE3P			
FTI 12	1' X 2'	12.5" X 24.5"	55-01020
FTI 14	1' X 4'	12.5" X 48.5"	55-01021
FTI 22	2' X 2'	24.5" X 24.5"	55-01022
FTI 24	2' X 4'	24.5" X 48.5"	55-01023
For TWW Series Wall Washer			
TWW FK82	8" X 2'	8.5" X 24.5"	55-01000
TWW FK84	8" X 4'	8.5" X 48.5"	55-01001



Flange Trim Assembly Kit

An accessory for 3 3/4" lay-in troffers and TE3P.

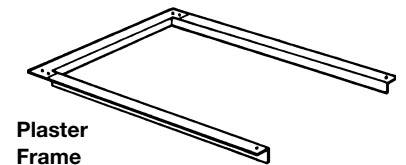
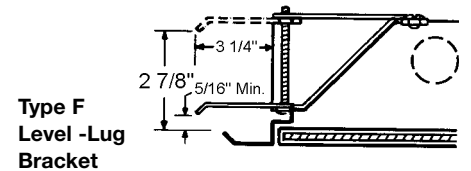


Flange Frame Out

A mounting accessory for flanged units to install in sheetrock or plaster ceilings.

PLASTER FRAME KIT CATALOG NUMBER*	NOMINAL SIZE	MAKE CEILING OPENING†‡
PF __ 14"	1' X 4'	12 1/4" X 48 3/8"
PF __ 22"	2' x 2'	24 1/4" X 24 3/8"
PF __ 24"	2' X 4'	24 1/4" X 48 3/8"
PF __ 44"	4' X 4'	48 1/4" X 48 3/8"

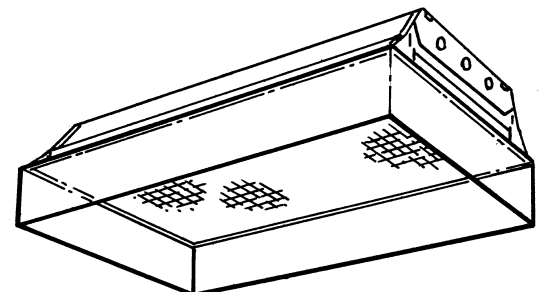
† Add only 24" or 48" for fixture in continuous rows.
* Insert "I" for Individual kit; insert "C" for Continuous row; insert "E" for End row kit.
‡ Add 1/4" if using plaster frame or FTI kit.



Skylite Collar

Deep regression for recessed skylight effect. Universal for lay-in fixtures in T-bar ceilings with proper clearance. Usually fitted to troffer with white diffuser and daylight lamps. Maintains visual comfort with low glare.

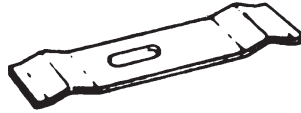
Steel collar with baked white enamel finish. Shipped flat. Assembles quickly at jobsite. Available in 2", 4" or 6" depth. Specify TWS, include dimensions (1x4, 2x2, 4x4).



Lay-in Accessories and Upgrades

Earthquake Clips

Provides additional security beyond the integral clip on 2'-wide troffers. EC kit includes clip and screws. Specify EC515 for deep parabolics.



Air-handling functions are offered on SIMKAR TEP deep-cell parabolic troffers.

NOTE: Efficacy may be affected by today's cooler running ballasts and T8 lamps which, when combined with master/satellite wiring plans, actually result in a much cooler lamp chamber. Additional heat removal may cause starting problems with some energy-saving lamp types. Consider the rating of each fixture, plenum design, and lamp and ballast combination before specifying air-handling units.

Heat Removal

For flush steel door models (T and F troffers and TE3P), suffix HR provides heat removal through extraction vents on top of fixture housing. For units with flat plastic diffusers, a hinged flush steel door with open ends for heat removal is supplied.

For parabolic and louvered models, suffix AH provides heat removal through extraction vents in ends of TEP and TE2P troffers.

Air Combination*

For TEP and TE2P parabolic troffers only, suffix AC provides air supply slots on 4' sides hidden from sight by a black reveal. Unit is compatible with a variety of air supply boots. Unit also has ends open for heat removal through extraction vents.

Supply Air or Air Return

For TEP and TE2P parabolic troffers only, suffix AS provides air slots on 4' sides hidden from sight by black reveal and hinged floating door. Unit is compatible with a variety of air supply boots. No heat extraction vents on this type.

*Consult factory for minimum quantity.

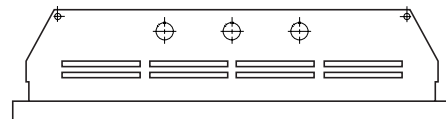
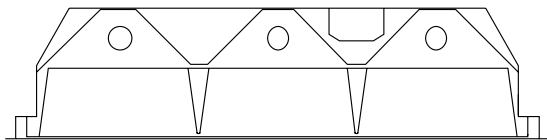
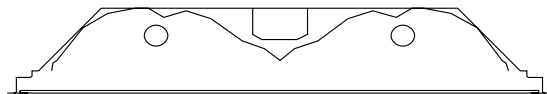


Illustration of TEP-AH deep parabolic shows vents for extraction through end



Aluminum Reflectors for Parabolic Series TEP, TE2P

Apply SR, AR or WR. Example: TEP244 432 18C B11 SR



Aluminum Reflectors for Troffer Series TY, FY, TK, etc.

Apply SR, AR or WR. Example: TY244 332 B11 SR

SIMKAR® Reflectors

Computer designed to be a perfect combination with SIMKAR fixtures. Apply SR, AR or WR to upgrade your fixture type.

Material:

SR – Specular Silver laminated to aluminum

AR – Specular Anodized Aluminum

WR – White finish, 90% reflectance.

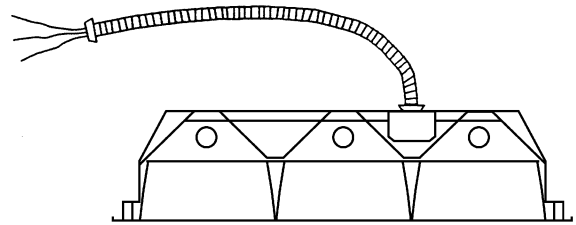
Mounting: Troffer and parabolic reflectors attach with screws and are shipped installed.

6' Flex and Leads (Suffix FL)

Specify desired flex:

- FL1 = 3/8" flex with two #18, one ground and one connector
- FL2 = 3/8" flex with three #18, one ground and one connector
- FL3 = 1/2" flex with three #18, one ground and one connector
- FL4 = 3/8" flex with two #18, one ground and two connectors
- FL5 = 3/8" flex with three #18, one ground and two connectors
- FL6 = 1/2" flex with three #18, one ground and two connectors
- FL9 = Customer specified or supplied

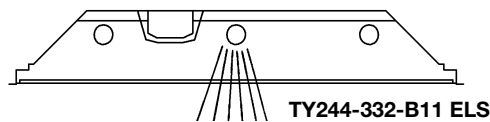
Flex can also be added to a Master fixture.



Example: Flex with two connectors TEP-244-332-B11-FL4 (or FL5 for inboard/outboard switching).

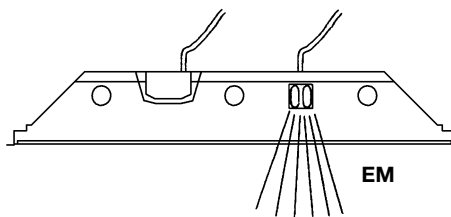
Emergency Lighting System (Suffix ELS)

Fixtures equipped with ELS will respond in power failures with one lamp operational for 90 minutes. U.L. listed, including indicator light and test button. Bodine emergency packs may also be specified.



Emergency Socket (Suffix EM)

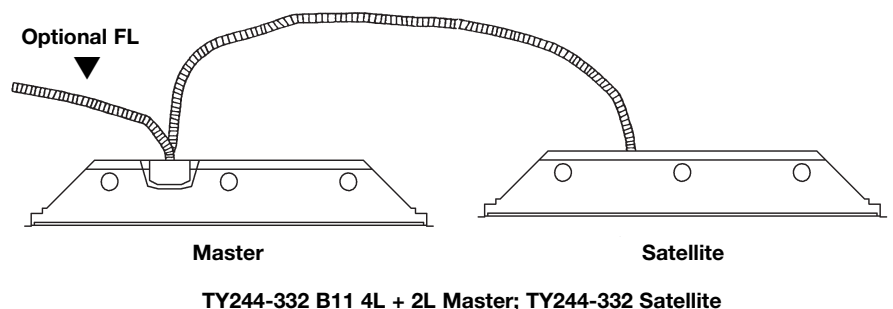
Equips fixture with incandescent or PL socket for nightlight or emergency use. Specify lamp source and wattage when ordering. Not available on 277V fixtures.



Master/Satellite (Tandem) Concept (Suffix M/S)

The Master/Satellite option offers energy savings by switches or controls allowing center lamp and outside lamps to be individually operated with fewer ballasts and connections. Combine with electronic ballasts to handle many lamps from one master unit.

Example: For three-lamp troffers, order a four-lamp and two-lamp electronic ballast Master, all prewired at the factory and ready to snap into position on access plate with 11' of flex to satellite fixture, which is also prewired to accept satellite fixture, which is also prewired to accept satellite fixture. The four-lamp ballast drives outboard lamps and the two-lamp ballast drives inboard lamp. Standard 11' or optional 12' interconnect. Master unit available with optional flex and lead.



Modular Wiring (MW)

Customer supplied plug for factory installation in access plate.

ELS SUFFIXES	
Suffix	Lumen Rating
B50	1100 - 1400
B90	500 - 600
B100	350 - 450
Damp Location	Lamps
BDL500	(2) 2' - 8'
BDL600	(2) 2' - 8'
BDL900	(1) 2' - 4'

Troffer Gasketing

Gasketing prevents light leaks and encloses fixture from foreign materials.

LDG – Lens and door gasketing

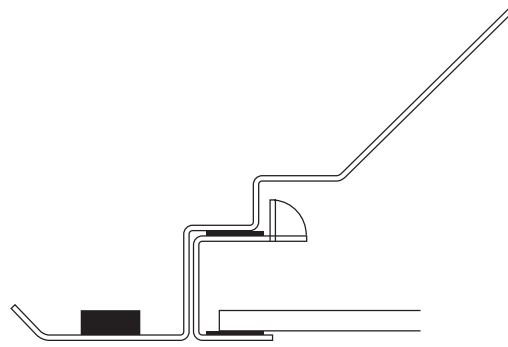
LDFG – Lens, door, and fixture gasketing

LFG – Lens and fixture gasketing

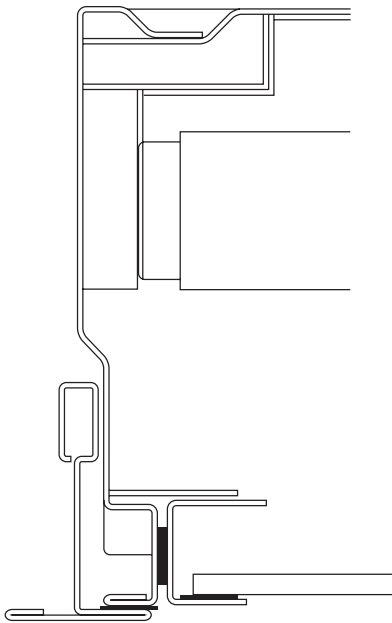
LG – Lens gasketing

Order as suffix to troffer part number, for example, TY244 432 B11 LDFG.

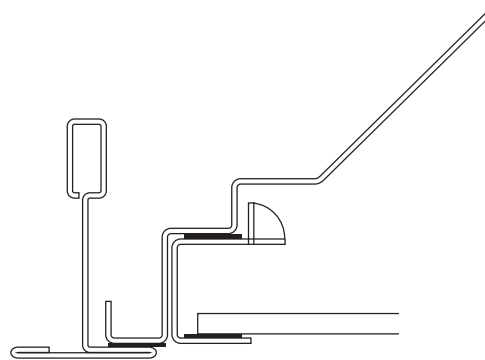
Open celled polyurethane gasketing is standard, for closed celled neoprene use N to designate, i.e. LDFNG.



Width View



Length View with T-bar



Width View with T-bar

S - Standard O - Optional, consult factory for exceptions	Troffers						Parabolics						Direct/ Indirect		Cove		Grid Light
	TA	TJ, TJ5 TT, TT5	TS	TY	T_66	XTKP	TEP94	TEP124	TEP	TE2P	TE3P	TDPW	COV	TWW	GL		
Ballast Options																	
B4 - Magnetic T8	0	0	0	0	0	0	0	0	0	0	0	0	0	0	0	0	
B5 - Electronic T12	0	0	0	0		0	0	0	0	0	0	0	0	0	0	0	
B8 - Customer Supplied	0	0	0	0	0	0	0	0	0	0	0	0	0	0	0	0	0
B9 - Customer Specified	0	0	0	0	0	0	0	0	0	0	0	0	0	0	0	0	0
B10 - Magnetic TT Biax	0	0	0	0	0	0	0	0	0	0	0	0	0	0	0	0	S
B11 - Electronic T8, Solid State Octron	0	0	0	0	S	0	0	0	0	S	S	S	S	S	S	S	
B11 LP - Electronic T8, Low Power	0	0	0	0	0	0	0	0	0	0	0	0	0	0	0	0	
B11 SHR - Electronic T8, Rapid Start, <10% THD	0	0	0	0	0	0	0	0	0	0	0	0	0	0	0	0	
B11 UNV - Electronic T8 Instant Start, Universal Voltage, <10% THD	0	0	0	0	0	0	0	0	0	0	0	0	0	0	0	0	
B12 - Electronic T5																	
B14 - Electronic TT Biax	0	0	0	0	0	0	0	0	0	0	0	0	0	0	0	0	0
DIM - Dimmable, Specify MKVII, MKX, Lutron EC010, etc.	0	0	0	0	0	0	0	0	0	0	0	0	0	0	0	0	0
E1 - Energy Saving Magnetic T12	S	S	S	S	S	S	S	S	S	S	S	S	S	S	S	S	S
ESB - Residential Magnetic T12	0	0	0	0	0	0	0	0	0	0	0	0	0	0	0	0	0
LT - Cold Weather, 0° F	0	0	0	0	0	0	0	0	0	0	0	0	0	0	0	0	0
RES - Magnetic T12 LPP																	0
Door Frame																	
White Steel	S	S	S	S	S	S	S	S	S	S	S	S	S	S	S	S	
Black Steel				0													
FW - Flat White Aluminum	0	0	0	0	0	0	0	0	0	0	0	0	0	0	0	0	0
RB - Regressed Black	0	0	0	0	0	0	0	0	0	0	0	0	0	0	0	0	0
RW - Regressed White	0	0	0	0	0	0	0	0	0	0	0	0	0	0	0	0	0
Lenses and Louvers																	
A - Parawedge 1/2 x 1/2 x 1/2 cell, Specify Silver or Gold Finish	S																
B - .125 Polycarbonate				0													
C - .200 P15 Prismatic				0													
E - Shallow Parabolic				0	0												
E2P - Deep Cell, Precision Cut Off, Semi-specular										S							
E3P - Precision Cell, VDT, Specular																S	
EP - 2" Deep Cell, Semi-Specular							S										
EP - 3" Deep Cell, Semi-Specular							S	S									
_G - Specular Gold Louver	0	0	0	0	0	0	0	0	0	0	0	0	0	0	0	0	0

S - Standard O - Optional, consult factory for exceptions	Troffers						Parabolics						Direct/ Indirect	Cove		Grid Light	
	TA	TJ, TJ5 TT, TT5	TS	TY	T_66	XTKP	TEP94	TEP124	TEP	TE2P	TE3P	TDPW		COV	TWW		
		0	0	0	0	0	0	0	0	0	0	0		0	0		0
Lenses and Louvers continued																	
J - 3/4 x 3/4 x 1/2 cell - 1/2" deep		0															
J5 - 3/4 x 3/4 x 3/8 cell - 3/8" deep		0															
K - .125 Prismatic Acrylic				0		S											
L - White Lucicube 1/2 x 1/2 x 3/8 (Eggcrate)				0													
N - .150 Thick Injection Molded, Specify thickness and make				0													
O - .140 Acrituf - High Impact				0													
OLY - Overlay	0	0						0	0								
P - Acrylic Drop Dish				0													
Q - .125 RFI with Ground Strap				0													
S - Paracube Silver 1 1/2 x 1 1/2 x 1, Specify Silver or Gold Finish			S														
_S - Specular Silver Louver	0	0	0							0							
T - 3/4 x 3/4 x 1/2 cell with Overlay		0															
T5 - 3/4 x 3/4 x 3/4 cell with Overlay		0															
U - .156 Prismatic No RFI				0		0											
V - .187 Pattern #19 Prismatic				0													
W - Flat Milk White Acrylic				0													
_W - White Louver														0			
X - Parahex, Specify Silver or Gold Finish				0													
Y - A12 Prismatic Acrylic				S	0	0											
Z - Customer Specified				0		0											
Miscellaneous																	
20G - 20 gauge, NYC approved	0	0	0	0													
AC - Air Combination								0	0								
AH - Heat Removal								0	0								
AS - Air Supply								0	0								
DL - Damp Location Label	S	S	S	S	S	S	S	S	S	S	S	S	S	S	S	S	S
ELS - Emergency Lighting System	0	0	0	0	0	0	0	0	0	0	0	0	0	0	0	0	0
EM - Emergency Socket, specify incandescent or PL and wattage	0	0	0	0	0	0	0	0	0	0	0	0	0	0	0	0	0
FB - Fast Blow Fusing	0	0	0	0	0	0	0	0	0	0	0	0	0	0	0	0	0
FL - Flex, specify flex and leads	0	0	0	0	0	0	0	0	0	0	0	0	0	0	0	0	0
FR - Fire Rated Label (box supplied by others)	0	0	0	0	0	0	0	0	0	0	0	0	0	0	0	0	0

S - Standard O - Optional, consult factory for exceptions	Troffers						Parabolics						Direct/ Indirect	Cove		Grid Light
	TA	TJ, TJ5 TT, TT5	TS	TY	T_66	XTKP	TEP94	TEP124	TEP	TE2P	TE3P	TDPW		COV	TWW	
		0	0	0	0	0							0			0
Miscellaneous continued																
HR - Heat Removal	0	0	0	0	0						0					
M/S - Master Satellite	0	0	0	0	0	0				0	0	0				
MW - Modular Wiring	0	0	0	0	0	0	0	0	0	0	0	0				
O/U - Over/Under, stacked lamps							0									
RFI - Radio Suppressor Filter	0	0	0	0	0	0	0	0	0	0	0	0	0	0	0	0
SB - Slow Blow Fusing	0	0	0	0	0	0	0	0	0	0	0	0	0	0	0	0
Reflectors																
AR - Anodized Reflector	0	0	0	0	0					0	0	0				
SR - Silver Reflector	0	0	0	0	0					0	0	0				
WR - White Reflector, 90% reflectance	0	0	0	0	0					0	0	0				
Gasketing																
LDFG - Lens, door, and fixture gasketing	0	0	0	0	0											
LDG - Lens and door gasketing	0	0	0	0	0					S						
LFG - Lens and fixture gasketing	0	0	0	0	0											
LG - Lens gasketing	0	0	0	0	0											
Lamps																
L3 - Energy Saving Cool White Lamps	0	0	0	0	0	0	0	0	0	0	0	0	0	0	0	0
L9 - Lamps - Specify Color K°	0	0	0	0	0	0	0	0	0	0	0	0	0	0	0	0
Flange Kits																
FTI 12 - Flange Kit for 1x2	0	0	0	0	0											
FTI 14 - Flange Kit for 1x4	0	0	0	0	0											
FTI 22 - Flange Kit for 2x2	0	0	0	0	0									0		
FTI 24 - Flange Kit for 2x4	0	0	0	0	0									0		
PFI-14 - Plaster Frame for 1x4	0	0	0	0	0											
PFI-22 - Plaster Frame for 2x2	0	0	0	0	0											
PFI-24 - Plaster Frame for 2x4	0	0	0	0	0											
GCK12 - Grid Conversion Kit for 1x2																
GCK14 - Grid Conversion Kit for 1x4										0						
GCK22 - Grid Conversion Kit for 2x2										0	0	0	0	0	0	0
GCK24 - Grid Conversion Kit for 2x4										0	0	0	0	0	0	0
GCK94 - Grid Conversion Kit for 9'x4'										0						
TWW-FK82 - Flange Kit for 2'																0
TWW-FK84 - Flange Kit for 4'																0

