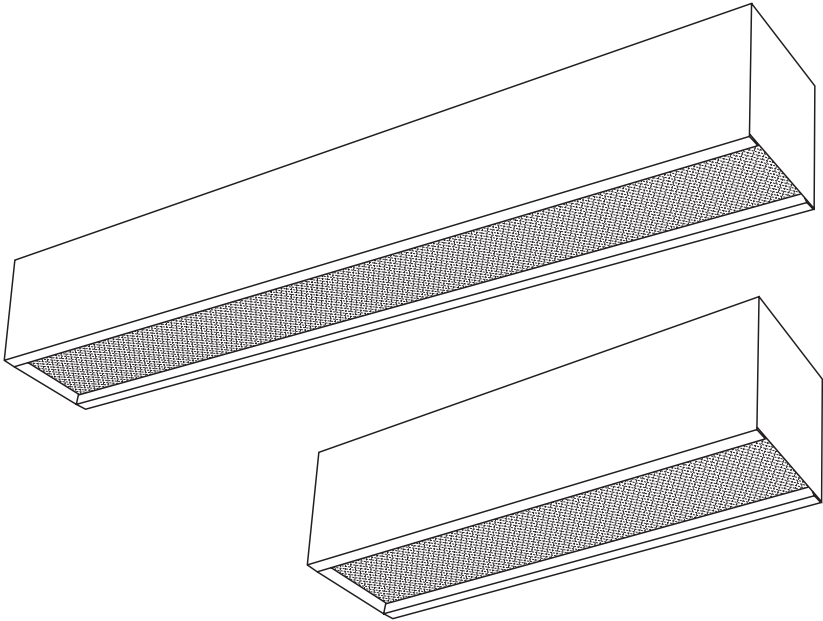


# Wall Task

## WY66

2', 4'

CATALOG NUMBER	TYPE



**Housing:** Die-formed heavy gauge steel with high-gloss baked white enamel finish (minimum reflectance 86%) over rust inhibiting phosphate coat.

**Shielding:** Pattern A-12 prismatic acrylic lens (WY) or shallow parabolic with semi-specular finish, 12 cells on 2' unit and 24 cells on 4' unit (WE). Top or bottom available without shielding for direct/indirect lighting.

**Electrical:** Fully wired for 120V, 60Hz AC operation, thermally protected, automatic resetting, Class P, sound rated A, high-power factor ballast, unless otherwise specified. Electronic T8 shall be instant start, <20% harmonic distortion standard, specify suffix UNV for <10% harmonic distortion. Specify suffix UNV for universal voltage, 120 through 277V, 50/60Hz AC operation, Electronic T8 only. UL and C-UL listed.

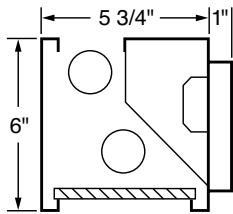
**Mounting:** Surface wall mount designed for horizontal mounting. Order WMB 4 1/4" square wall mounting bracket for 1" wall box (two per fixture required).

**Critical Application:** SIMKAR strives to offer the most current product designs and value. Consequently, all SIMKAR products are subject to redesign and revision. Critical applications such as size, operating temperature, or sensor operation should be confirmed with the factory.

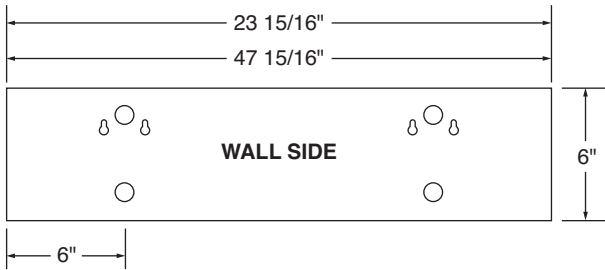
### FEATURES AND BENEFITS

- Lens or Louver ➤ For diffused or targeted less glaring illumination
- Direct/indirect option ➤ Task and ambient lighting source

### DRAWINGS AND DIMENSIONS



2 Lamp Model



### ORDERING INFORMATION

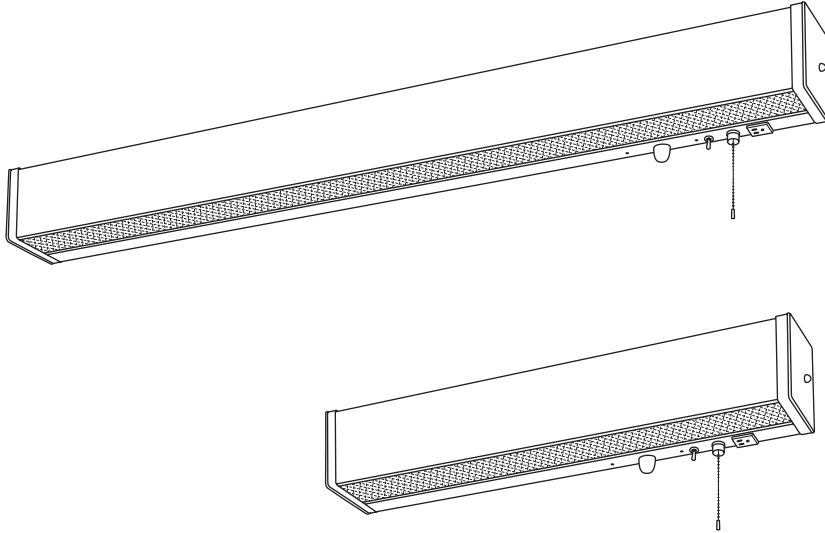
Example: WY66DI232B11120V

SERIES	FEATURE	LAMPS	BALLAST	VOLTAGE
WY66 - Prismatic bottom WE66 - Aluminum louver bottom	DI - Direct/indirect down/uplight FD - Face down (direct only) FU - Face up (indirect only) LN - Less lens for open bottom	117 - (1) 17W 24" T8 132 - (1) 32W 48" T8 217 - (2) 17W 24" T8 232 - (2) 32W 48" T8	B4 - Magnetic T8 B11 - Electronic T8	120V 277V UNV - 120-277V

For additional information, see chart on page 119.



CATALOG NUMBER	TYPE



**Housing:** Die-formed heavy gauge steel with high-gloss baked white enamel finish (minimum reflectance 86%) over rust inhibiting phosphate coat. Available in white, walnut, or oak faux finishes on steel. Standard model has front baffle, center baffle, convenience outlet, six-watt night light with push switch, and four-position T-rated pull switch for up or down light selection. Companion WBT Series in lengths of 24", 48", and 96" tandem also available. See page 149.

**Shielding:** Clear acrylic linear prismatic diffuser and linear prism provides glare-free illumination and efficient light distribution.

**Electrical:** Fully wired for 120V, 60Hz AC operation, thermally protected, automatic resetting, Class P, sound rated A, high-power factor ballast, unless otherwise specified. Electronic T8 shall be instant start, <20% harmonic distortion standard, specify suffix UNV for <10% harmonic distortion. Specify suffix UNV for universal voltage, 120 through 277V, 50/60Hz AC operation, Electronic T8 only. UL and C-UL listed.

**Mounting:** Surface wall mount horizontal.

**Critical Application:** SIMKAR strives to offer the most current product designs and value. Consequently, all SIMKAR products are subject to redesign and revision. Critical applications such as size, operating temperature, or sensor operation should be confirmed with the factory.

**FEATURES AND BENEFITS**

- Convenience outlet, night light, pull switch ➤ Ease of use
- Center baffle ➤ For up and down light selection
- Clear acrylic linear prismatic diffuser ➤ Glare-free illumination and efficient light distribution
- Multiple finishes ➤ To complement specific décor

**ORDERING INFORMATION**

Example: **OMW232B11120V**

FINISH	# LAMPS	LAMPS	BALLAST	SPECIAL FEATURE	OPTION	VOLTAGE
OMG - Walnut tone on steel	2 - Two 3 - Three	17 - 17W 24" T8 20 - 20W 24" T12 25 - 25W 36" T8	B4 - Magnetic T8 B11 - Electronic T8 E1 - Energy Saving Magnetic T12	1DN1UP - One downlight, one uplight 1DN2UP - One downlight, two uplights 2DN1UP - Two downlights, one uplight	LA - Less switch, nightlight and outlet LCO - Less outlet LIB - Less internal baffle LSF - Less fascia for milk white translucent front	120V 277V* UNV - 120-277V*  *277V and UNV not available with switch, night light, or outlet
OMO - Oak tone on steel		30 - 30W 36" T12 32 - 32W 48" T8				
OMW - White		40 - 34 or 40W 48" T12				

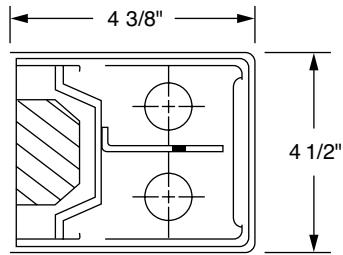
For additional information, see chart on page 119.

**PHOTOMETRIC DATA, 2-32W 4' Model**

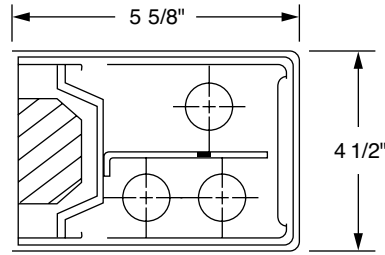
CANDLEPOWER				AVERAGE LUMINANCE				COEFFICIENT OF UTILIZATION								
Angle	0	45	90	CD/SQ.M			RC									
				Angle	0	45	90	80		70		50		RCR		
								70	50	30	70	50	30	50	30	
0	687	687	687	0	5309	5309	5309	1	57	54	51	54	51	49	46	44
5	685	690	691	45	4349	3615	3337	2	52	47	43	49	44	41	39	37
15	660	699	727	55	3236	2832	2835	3	47	41	36	44	39	34	35	31
25	608	690	723	65	2343	2316	2724	4	43	36	31	40	34	30	31	27
35	530	628	638	75	1817	2224	3096	5	40	32	27	37	31	26	28	24
45	421	498	506	85	1175	2603	3688	6	36	29	24	34	28	23	25	21
55	260	362	408	<b>LIGHT DISTRIBUTION</b>				7	34	26	21	32	25	20	23	19
65	144	264	359	<b>Zone</b>	<b>Lumens</b>	<b>%Lamp</b>	<b>%Fixture</b>	8	31	24	19	30	23	18	21	17
75	74	215	358	0-30	575	9.9	17.3	9	29	22	17	28	21	16	19	15
85	22	199	354	0-40	953	16.4	28.7	10	27	20	16	26	19	15	17	14
90	3	203	344	0-60	1641	28.3	49.5									
				0-90	2347	40.5	70.8									
				0-180	3316	57.2	100.0									

Lamps = (2) F32T8 @ 2900 lumens ea. Input watts = 99 LER = 29 Test #01707 Ballast = Electronic Ballast Factor = .87 S/MH: 0 = 1.2, 90 = 1.4  
 Comparative yearly lighting energy cost per 1000 lumens = \$8.27 based on 3000 hrs. and \$.08 per KWH

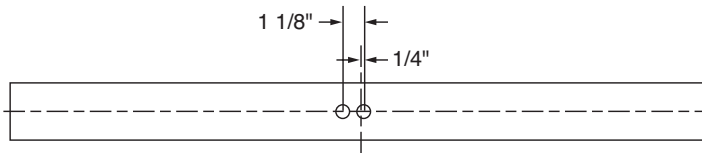
**DRAWINGS AND DIMENSIONS**



**2 Lamp Model**



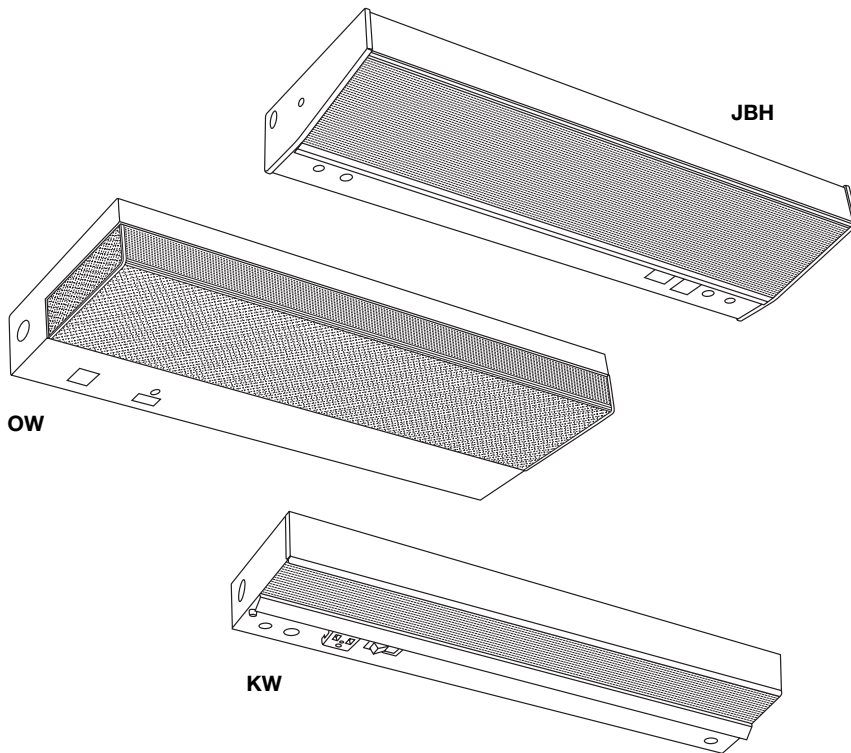
**3 Lamp Model**



# All Purpose Task JBH, OW, KW

2', 3', 4', 5'

CATALOG NUMBER	TYPE



**Housing:** Die-formed heavy gauge steel with high-gloss baked white enamel finish (minimum reflectance 86%) over rust inhibiting phosphate coat. Forward throw angled housing (JBH). Flattened KO's provided, top, back, and sides.

**Shielding:** JBH, KW and OWU diffusers are all linear prismatic with D.R. for durability. OW has a linear front with prismatic bottom and sides.

**Electrical:** Fully wired for 120V, 60Hz AC operation, thermally protected, automatic resetting, Class P, sound rated A, high-power factor ballast, unless otherwise specified. Electronic T8 shall be instant start, <20% harmonic distortion standard, specify suffix UNV for <10% harmonic distortion. Specify suffix UNV for universal voltage, 120 through 277V, 50/60Hz AC operation, Electronic T8 only. UL and C-UL listed.

**Mounting:** Individual or continuous rows. OW and JBH units are intended for surface wall mount, horizontal use.

**Critical Application:** SIMKAR strives to offer the most current product designs and value. Consequently, all SIMKAR products are subject to redesign and revision. Critical applications such as size, operating temperature, or sensor operation should be confirmed with the factory.

## FEATURES AND BENEFITS

- Open Front (OW), Solid Front (KW) and Forward Throw (JBH) ➤ Choice of light distribution
- Clear linear prismatic acrylic diffuser with D.R. ➤ Sturdy, durable construction
- Horizontal surface mount; individual, tandem or continuous row ➤ Flexible mounting options

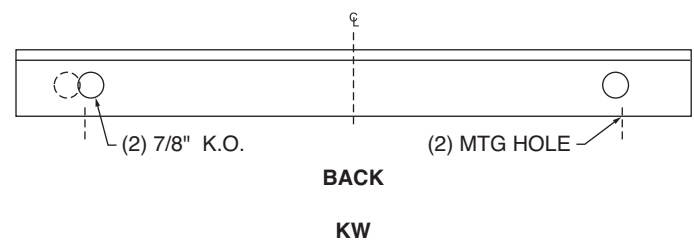
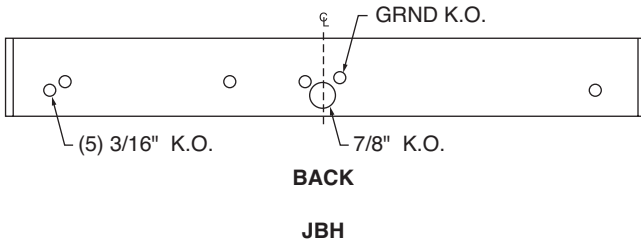
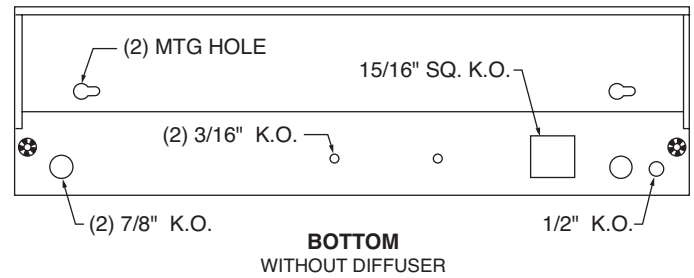
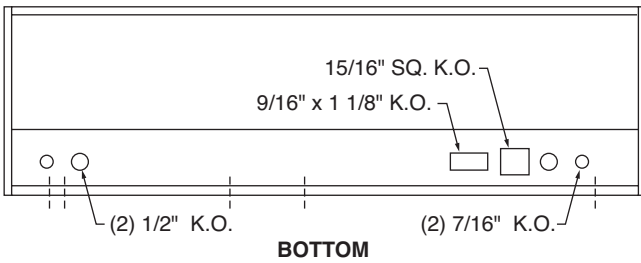
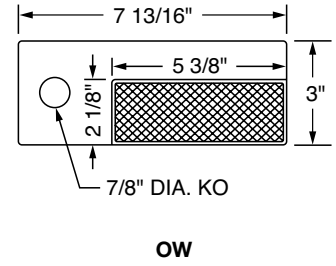
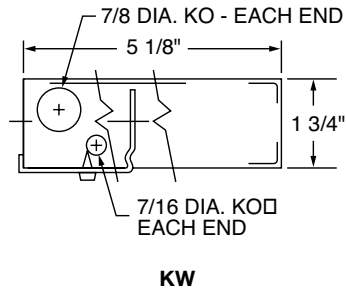
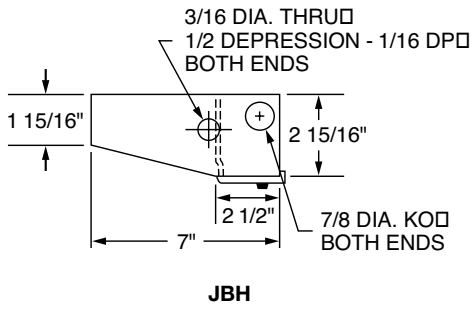
## ORDERING INFORMATION

Example: OW217B11120V

SERIES	# LAMPS	LAMPS	OPTION	BALLAST	VOLTAGE
OW	1 (KW)	17 - 17W 24" T8	C - 6' white 3 wire cord and plug	B4 - Magnetic T8 (KW)	120V
OWU - 2 lamps down 1 lamp up, indicate if 2 ballasts required	2 (OW, JBH)	20 - 20W 24" T12 25 - 25W 36" T8 30 - 30W 36" T12 32 - 32W 48" T8	CO - Grounded convenience outlet L - Lamps installed LA - Less accessories SF - Solid front (standard on KW) SW - Rocker switch TF - Translucent milk white front	B11 - Electronic T8 E1 - Energy Saving Magnetic T12 (OW, JBH)	277V* UNV - 120-277V*
JBH JBUY - 1 5/8" uplight cutouts in snap-in diffuser		40 - 34 or 40W 48" T12 60 - 40W 60" T8			*277V and UNV not available with switch or outlet
KW		Note: OW and JB fixtures are available in 24", 36", 48" T8 or T12. KW fixtures are available in T8 only, 24", 36", 48", 60".			

For additional information, see chart on page 119.

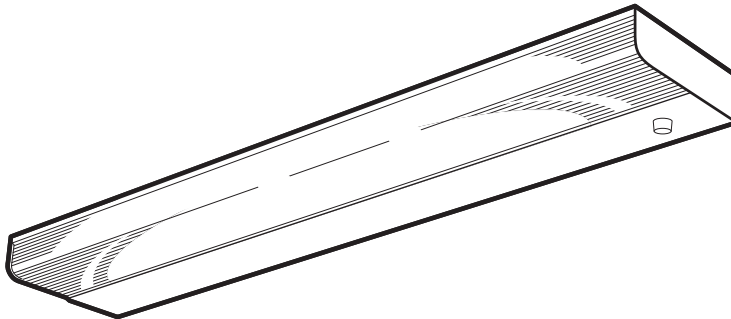
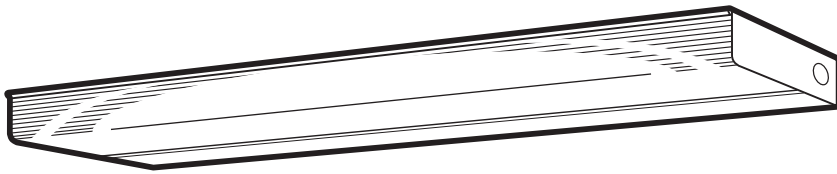
**DRAWINGS AND DIMENSIONS**



# Low Profile Task IW, UW, XIW

12", 18", 21", 24", 33", 36", 42", 48"

CATALOG NUMBER	TYPE



**Housing:** Die-formed heavy gauge steel with high-gloss baked white enamel finish (minimum reflectance 86%) over rust inhibiting phosphate coat. Available with chrome or wood tones on steel (UW). XIW has durable high gloss powder coat post paint finish (90% reflectance) over rust inhibiting phosphate coat. Ballast compartment is designed with concealed screws, eliminating exposed hardware (IW and XIW). Knockouts provided top, side and back.

**Shielding:** Snap-in D.R. acrylic diffuser for longer life and less breakage. Ribbed linear prisms for even light distribution. Translucent milk white is standard, steel front available.

**Electrical:** Fully wired for 120V, 60Hz AC operation, thermally protected, automatic resetting, Class P, sound rated A, high-power factor ballast, unless otherwise specified. Electronic T8 shall be instant start, <20% harmonic distortion standard, specify suffix UNV for <10% harmonic distortion. Specify suffix UNV for universal voltage, 120 through 277V, 50/60Hz AC operation, Electronic T8 only. UL and C-UL listed.

**Mounting:** Individual or continuous rows.

**Critical Application:** SIMKAR strives to offer the most current product designs and value. Consequently, all SIMKAR products are subject to redesign and revision. Critical applications such as size, operating temperature, or sensor operation should be confirmed with the factory.

## FEATURES AND BENEFITS

- Narrow width ➤ Discreet source of functional illumination
- Snap-in translucent milk white acrylic diffuser with D.R. and linear prisms ➤ Uniform, efficient lighting with easy access for cleaning and maintenance
- Post-painted (XIW) ➤ Durable, uniform finish; controlled reflectivity
- No exposed hardware (IW, XIW) ➤ Clean surface

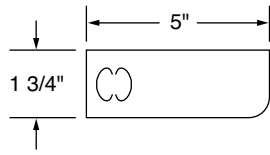
## ORDERING INFORMATION

Example: UW8PH120V

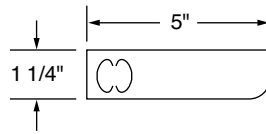
SERIES	LAMPS	OPTION	BALLAST	VOLTAGE
UW - White	8 - 8W 12" T5	40 - 40W 48" T12	TS - Trigger start	120V
US - Chrome	15 - 15W 18" T12*	117 - (1) 17W 24" T8	B11 - Electronic T8	277V*
UG - Walnut	20 - 20W 24" T12	125 - (1) 25W 36" T8	B4 - Magnetic T8	UNV - 120-277V*
UO - Oak	30 - 30W 36" T12	132 - (1) 32W 48" T8	E1 - Energy Saving Magnetic T12	*277V and UNV not available with switch or outlet
	*15W 18" T12 (specified with TS), can also be T8 (specified with PH)		PH - Preheat	
		LA - Less accessories	Leave blank for T5	
IW	8 - 8W 12" T5	C - White grounded 6' cordset		
XIW - Post painted, electronic start	13 - 13W 21" T5 28 - (2) 8W 12" T5 813 - 8W 12" and 13W 21" T5 213 - (2) 13W 21" T5	CO - Grounded convenience outlet L1 - Lamps installed LA - Less accessories SF - Solid front SW - Rocker switch		

For additional information,  
see chart on page 119.

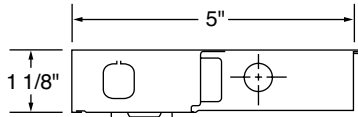
**DRAWINGS AND DIMENSIONS**



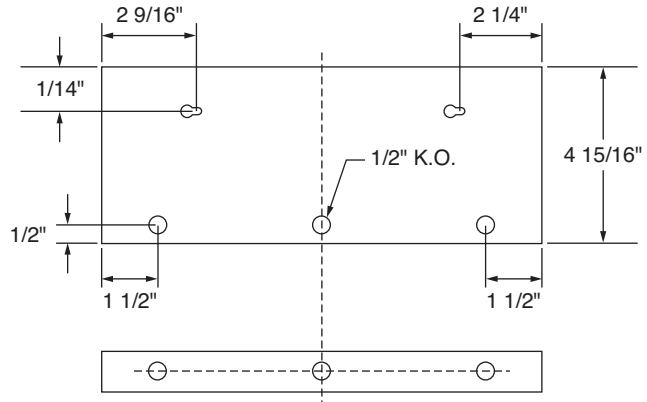
**UW**  
TS and B11 Units



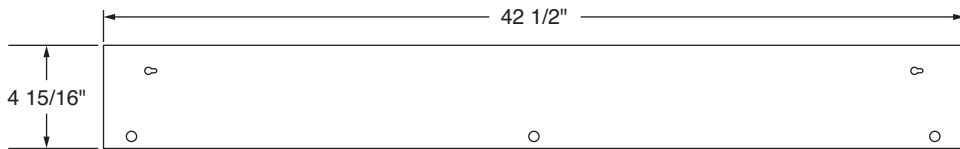
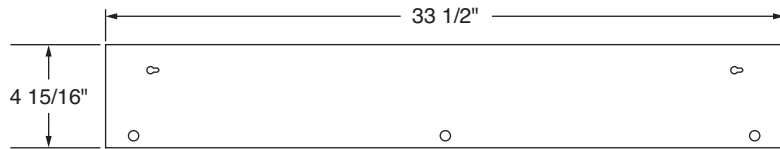
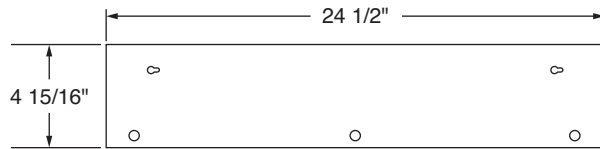
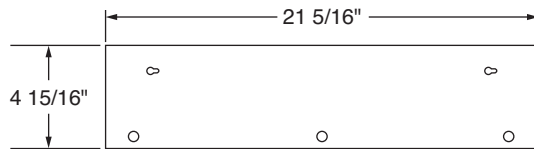
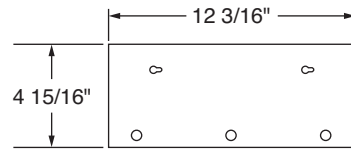
**UW**  
PH Units



**IW / XIW**



**IW / XIW**



S - Standard O - Optional, consult factory for exceptions	Wall	Healthcare	Task			Undercabinet		
	W_66	OM	JBH	OW	KW	IW	UW	XIW
<b>Ballast Options</b>								
B4 – Magnetic T8	0	0	0	0	0	0	0	0
B8 – Customer Supplied	0	0	0	0	0	0	0	0
B9 – Customer Specified	0	0	0	0	0	0	0	0
B11 – Electronic T8, Solid State Octron	S	0	0	0	S	0	0	0
B11 UNV – Electronic T8 Universal Voltage, <10% THD		0	0	0	0	0	0	0
B11 LP – Electronic T8, Low Power	0	0	0	0	0	0	0	0
B11 SHR – Electronic T8, Rapid Start, <10% THD	0	0	0	0	0	0	0	0
B11 SRH – Electronic T8, Instant Start, <10% THD	0	0	0	0	0	0	0	0
B12 – Electronic T5						0		0
B15 – Electronic Start T5						S		S
DIM – Dimmable, specify ballast, i.e. MKVII, MKX, Lutron ECO10							0	
E1 – Energy Saving Magnetic T12		S	S	S			S	
ESB – Residential Magnetic T12		0						
PH – Preheat							0	
RES – Residential Magnetic T12 LPF							0	
TS – Trigger Start							0	
<b>Miscellaneous</b>								
C – 6' white 3 wire cord and plug (CP3)			0		0	0	0	0
CC – Hardware/conduit connector					0			
CO – Convenience outlet		S	0	0	0	0	S	0
ELS – Emergency Lighting System	0	0	0	0				
FB – Fast Blow Fusing			0	0	0	0	0	0
L – Lamps (L1)						0	0	0
LA – Less accessories		0	0		0	0	0	0
L/CO – Less convenience outlet		0	0	0		0	0	0
L/SW – Less switch		0	0	0		0	0	0
LIB – Less Internal Baffle		0						
LSF – Less Fascia		0						
NL – Night light		S						
4PSW – 4-way Pull switch		S						
RSW – Rocker switch			0				0	
RF – Radio suppressor					0		0	
SB – Slow Blow Fusing			0		0	0	0	0
SF – Solid Front								0
SW – Switch				0	0	0	S	0
TF – Translucent White Front					0	0		0

